

RADs and the UML

Author: Keith Harrison-Broninski

Version: 1.0

Date: Monday, 25 April 2005

TABLE OF CONTENTS

| | | |
|----------|---|-----------|
| 1 | INTRODUCTION | 5 |
| 1.1 | PURPOSE..... | 5 |
| 1.2 | SCOPE..... | 5 |
| 1.3 | STRUCTURE | 5 |
| 2 | USER | 7 |
| 2.1 | SEPARATION OF PEOPLE AND USERS | 7 |
| 2.2 | MODELLING USERS | 7 |
| 2.2.1 | <i>User Objects</i> | 7 |
| 2.2.2 | <i>User Assignment</i> | 8 |
| 2.3 | MACHINE USERS | 9 |
| 3 | ROLE..... | 10 |
| 3.1 | CLASS..... | 10 |
| 3.2 | INTERROGATING THE STATE | 11 |
| 4 | ENTITY..... | 16 |
| 5 | TASK..... | 17 |
| 5.1 | SERVICE TASK..... | 17 |
| 5.2 | USER TASK..... | 19 |
| 5.3 | STARTROLE TASK | 20 |
| 5.3.1 | <i>Role()</i> | 20 |
| 5.3.2 | <i>Role(Actor actorInstance)</i> | 20 |
| 5.4 | ASSIGNROLE OPERATION..... | 21 |
| 6 | INTERACTION | 22 |
| 6.1 | MESSAGE INTERACTION | 22 |
| 6.2 | SIGNAL INTERACTION..... | 22 |
| 7 | ACTIVITY | 23 |
| 8 | STATE..... | 24 |
| 8.1 | INTERNAL TRANSITIONS | 26 |
| 8.1.1 | <i>Activity</i> | 26 |
| 8.1.2 | <i>Interaction giver</i> | 27 |
| 8.1.3 | <i>Interaction receiver</i> | 27 |
| 8.2 | GUARD CONDITIONS ON INTERNAL TRANSITIONS | 27 |
| 8.3 | TRANSITIONS BETWEEN STATES | 27 |
| 8.4 | POST-CONDITIONS | 28 |
| 8.5 | COMMON PRE-CONDITIONS | 28 |
| 8.5.1 | <i>Complex Transitions</i> | 28 |
| 8.5.2 | <i>Transition Branching</i> | 28 |
| 8.5.3 | <i>Composite States</i> | 28 |
| 8.6 | HISTORY STATE INDICATORS | 29 |
| 9 | PROCESS MODEL..... | 30 |
| 9.1 | PARTITIONING ROLES INTO PROCESSES | 30 |
| 9.2 | DEPICTING AN ENTIRE PROCESS | 30 |
| A | EXAMPLE PROCESS MODEL EXPORTED TO XMI..... | 31 |

TABLE OF FIGURES

FIGURE 1: ROLE-ACTIVITY DIAGRAM USED FOR EXAMPLES 6
FIGURE 2: ACTOR OBJECTS 8
FIGURE 3: ACTOR CLASS DEFINITION 9
FIGURE 4: ROLE CLASSES 11
FIGURE 5: ROLE CLASSES SHOWING OPERATIONS 12
FIGURE 6: ROLE CLASS DEFINITIONS 15
FIGURE 7: LIGHTWEIGHT OBJECT ENTITY CLASS 16
FIGURE 8: LIGHTWEIGHT OBJECT ENTITY CLASS DEFINITION 16
FIGURE 9: SERVICE PROVIDER CLASS 18
FIGURE 10: SERVICE PROVIDER CLASS DEFINITION 19
FIGURE 11: CLAIMANT STATECHART 24
FIGURE 12: CLAIMCASEWORKER STATECHART 25
FIGURE 13: UNDERWRITER STATECHART 26

TYPGOGRAPHIC CONVENTIONS

Italic for emphasis.

Bold to define or refer to specific terms.

Underline variables in examples.

Courier New example code generated from a UML model (typically Java or XML).

1 Introduction

1.1 Purpose

This document describes an approach to the creation of **Role-Activity Diagrams** (RADs) which allows such process models to be expressed in the **Unified Modelling Language** (UML).

This is done in order to show that process models based on Roles, created for the purposes of Human Interaction Management, can be integrated with more general data, function and business modelling – for example via the standard dialect of XML for UML model interchange called *XMI*.

It has the subsidiary advantage that any UML modelling tool can be used to create such process models, although without:

- The specialized usability features available in a dedicated RAD tool

or

- A natural correspondence with the concepts of *Human Interaction Management (HIM)*, for which purposes a Role-based approach is typically chosen in the first place.

1.2 Scope

The reader is assumed already to possess an understanding of Role-Activity concepts and Human Interaction Management generally – for further details, see “Human Interactions: the Heart and Soul of Business Process Management”, Harrison-Broninski, K., 2005, Meghan-Kiffer Press. A full list of books, articles and white papers on both RAD and HIM is available at <http://www.rolemodellers.com/abstracts/>.

The reader is also assumed to possess a full understanding of the UML – for further details, see <http://www.uml.org>. Some custom UML stereotypes are defined in this document to express key Role-Activity concepts:

- class
 - <<role>>
 - <<lightweight object>>
 - <<service provider>>
- operation
 - <<assign>>
 - <<state>>
 - <<service>>
 - <<form>>
 - <<get>>

These stereotypes are explained below as they are introduced.

1.3 Structure

The document has a section devoted to each of the core concepts in Role-Activity Theory:

2. User
3. Role
4. Entity
5. Task
6. Interaction
7. Activity

- 8. State
- 9. Process Model

Each section describes how the corresponding concept can be implemented in the UML, and provides one or more example diagrams, based on the simple RAD shown below.

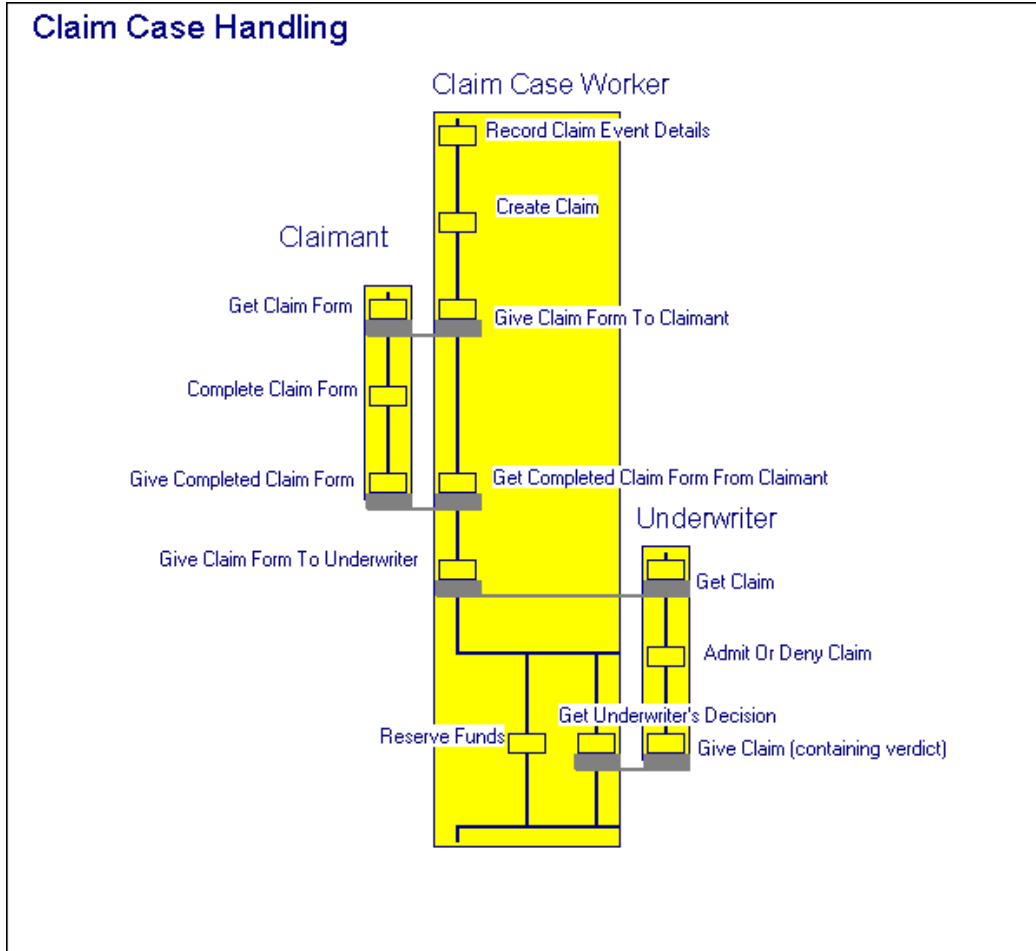


Figure 1: Role-Activity Diagram used for examples

Appendix A contains XMI code generated from the UML version of the example RAD by Together Control Center (version 5.5).

2 User

A **User** is a business operative with the ability to control the behaviour of a Role instance via Tasks (see section 5.2 below). We model this in the UML as follows.

2.1 Separation of People and Users

It is sensible to separate the *people in an organization* from *logins available to enterprise systems* – a person is not the same as a system user. Each staff member will have access to a subset of the different systems available in the organization – they will have a specific set of login permissions, even if the corresponding username/password combinations are all identical and controlled via a single LDAP directory.

Hence we introduce a distinction, between a **Person** object (which may for example be implemented via an LDAP entry including personal details, username and password) and a **User** object (that represents login permission to a specific system). A Person may have many Users. It is also possible for many Persons to share a particular User, although this is better implemented via delegation of active Role instances.

The implication of this approach for Role-Activity Modelling is that the true actor of a Role Instance is not a Person, but a User.

Hence a process engine will access a directory of system personnel. It will also maintain its own directory of Users, and allow system administrators to manage the assignment of one to the other.

A process engine will incorporate the minimal data structures to hold the data it needs to manage the Person/User assignment. These data structures will generally be populated with personal details obtained from corporate systems via the standard Lightweight Directory Access Protocol (LDAP), although direct entry of the data to the process engine will also be possible.

The assignment of Persons to Users is process-based like all enterprise activity. Hence it is covered by the theory of Human Interactions, can be modelled via RAD, and this shown in the UML as described below. However, in order to avoid losing focus we do not cover it explicitly in this document, and the reader is referred to the literature of Human Interaction Management for details. Similarly we do not cover any other aspect of Person data and functionality, such as those handled by an organisation's dedicated human resource systems, although again they should be made subject to process control.

2.2 Modelling Users

In order to model and control the assignment of different system Users to Role instances, there are two separate aspects to consider:

1. The modelling of individual Users as objects
2. The assignment of Users to Role instances.

2.2.1 User Objects

The standard UML **Actor** notation does not quite correspond to the RAD notion of User.

In UML terms, an actor is *a role played by an object (or objects) outside of a system that interacts directly with the system as part of a coherent work unit (a use case)*. In the diagram type **use case**, an Actor is defined in UML as a class with the standard stereotype <<actor>>, which is generally represented by a stick man.

Our requirement, however, is for an object *instance*, not a *class* – we want to show a specific system user, not a type of system user. However, in general Users share simple common behaviour (see below) – most specialisation is modelled via Roles. Hence, we can use the standard top-level UML class <<actor>> **Actor** (generally without need for subclassing), and when we need a User in a process model, use an *instance* of Actor, for instance

insuranceCaseWorker:Actor

Such an object can be shown using the standard stick man image if desired.

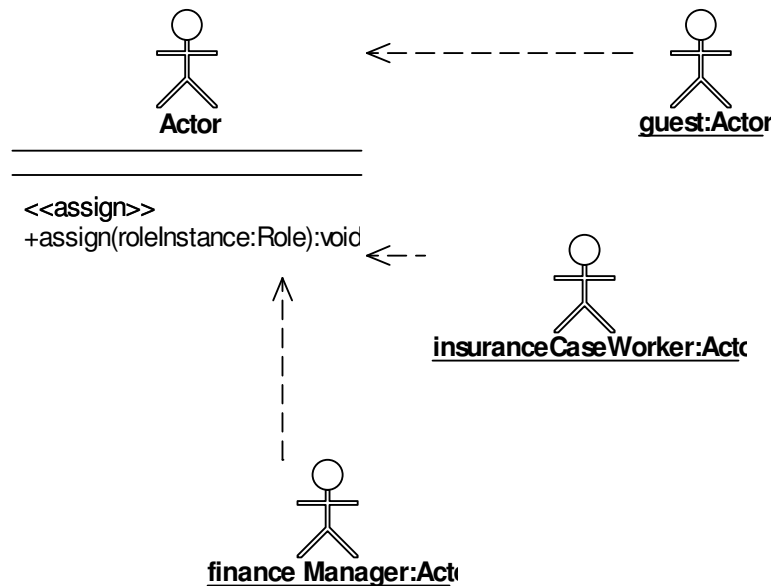


Figure 2: Actor objects

If we find that we need to subclass <<actor>> **Actor** to represent Users with a common and specific sort of behaviour, this can always be done, optionally with the introduction of new stereotypes. Care should be taken to implement subclasses on top of the stereotype definition given below, rather than on top of the standard definition.

2.2.2 User Assignment

Users are incorporated into a process model by assigning them to Role instances. Taking the above example of insuranceCaseWorker:Actor, a receptionist may create a Role instance to manage a new customer's call, and then assign the Role instance to this Actor instance for handling.

We achieve this by including a standard operation in the top-level class Actor, of the custom stereotype <<assign>>, of form:

```
<<assign>> public void assign(Role roleInstance) { }
```

This operation assigns the receiver to the specified role instance (see section 3 below for more details on the definition of a Role in the UML). A typical call might be:

```
insuranceCaseWorker.assign(newCase)
```

where newCase is an instance of a Role subclass. See section 5.3 below for details of how the newCase object is obtained and used.

The UML definition of the Actor class is given below. Note that a single Actor instance (User) may play many Roles.

```
/**
 * @stereotype actor */
public class Actor {
    private Vector roles = new Vector();

    /**
     * @stereotype assign
     */
    public void assign(Role roleInstance) {
        // Assign the specified Role instance to self
        roles.addElement(roleInstance);
    }
}
```

Figure 3: Actor class definition

2.3 Machine Users

A User can be a human or a machine. However, a Role with no **Service Tasks** with parameters (see section 5.1 below) or **User Tasks** (see section 5.2 below) has no need for a human User. Hence we make the following assumptions:

1. Roles containing Service Tasks with parameters (see section 5.1 below) or User Tasks (see section 5.2 below) require Users, which can be human or machine.
2. Roles containing no Service Tasks with parameters (see section 5.1 below) or User Tasks (see section 5.2 below) are typically acted by the process engine itself, and hence have no User assigned.

This simplifies the situation, and we use the operation **assign** defined in section 2.2 above if and only if the Role in question contains Service Tasks with parameters (see section 5.1 below) or User Tasks (see section 5.2 below). See section 5.3 below for how this applies to the creation of new Role instances.

3 Role

We model each Role in a process using both a **class diagram** (to define component entities, tasks and events) and a **statechart diagram** for the class (to define the state machine).

For details of the approach to statechart diagramming, see section 8 below. In this section we only discuss certain aspects of the class diagram.

3.1 Class

A Role is defined in the UML as a class of the custom stereotype <<role>>.

The superclass of all <<role>> classes is defined to be the notional top-level class **Role**. The properties of this class can be assumed, and there is no need to show it on the class diagram of every subclass.

Defining new processes generally involves creating new subclasses of Role. A <<role>> class can be abstract if required.

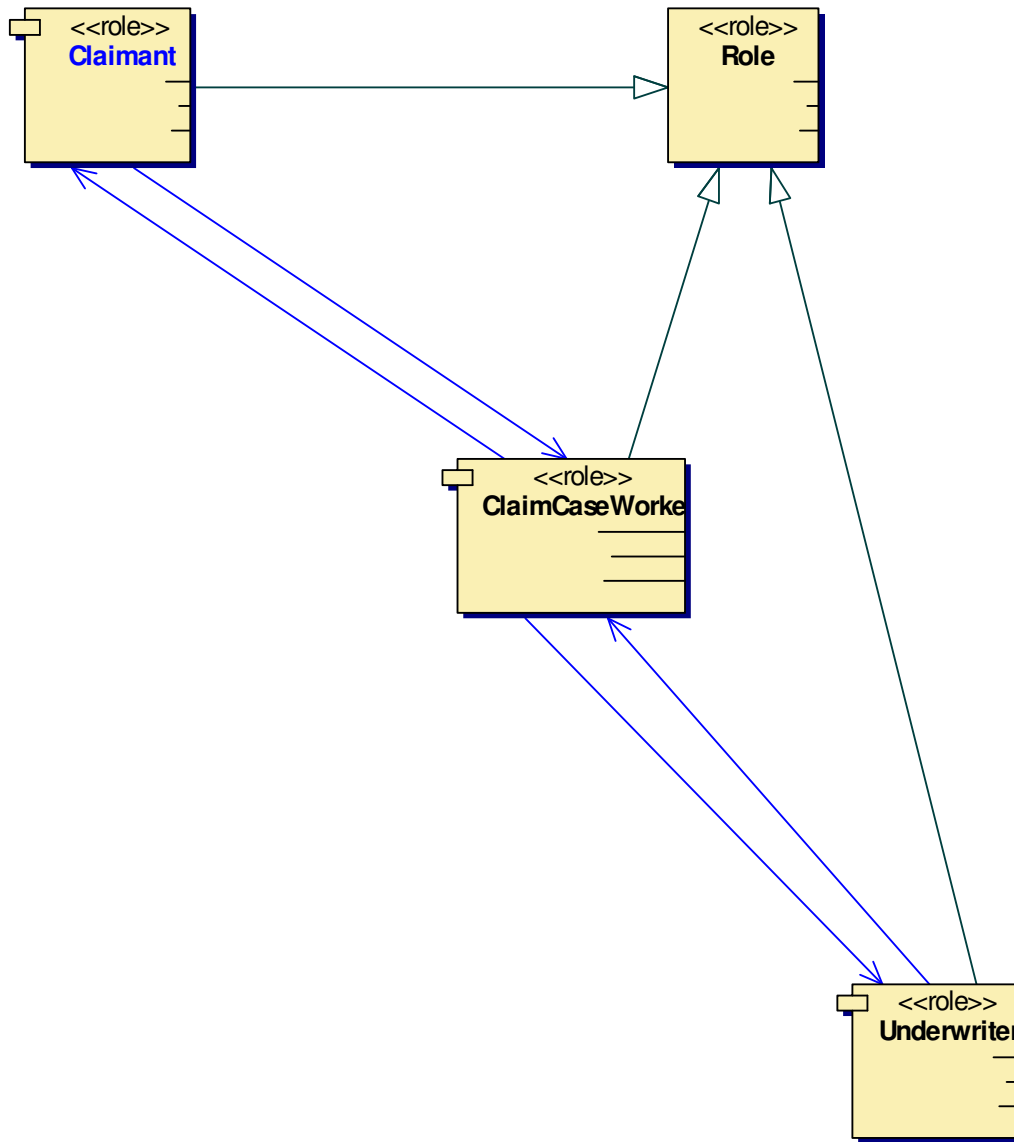


Figure 4: Role classes

3.2 Interrogating The State

The Role class requires various operations of return type **boolean** so that the process enactor can interrogate its current State(s). These are of the custom stereotype `<<state>>` - for example,
`<<state>> claimFormsComplete()`.

Such operations should be defined as **protected**, since the state of a Role is not visible externally.

Each `<<state>>` operation comprises a set of conditions on the Role's attributes, and returns **true** if and only if *all* the conditions hold. Each individual condition is a boolean expression, using the Role class attributes and operations.

See section 8 below for details of how the `<<state>>` operations are used in statechart diagrams.

The figures below illustrate some example Role class definitions. The stereotypes <<lightweight object>> and <<service>> are explained in sections 4 and 5.1 respectively.

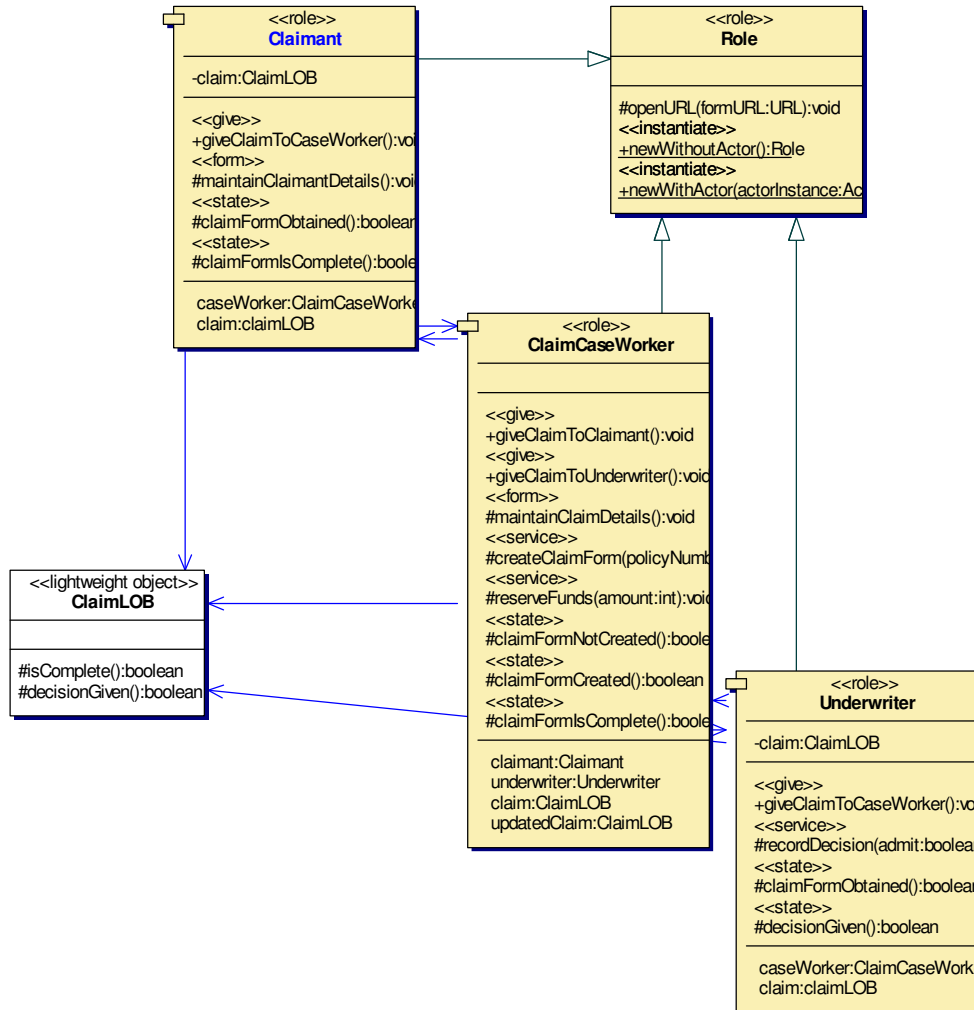


Figure 5: Role classes showing operations

```
/**
 * @stereotype role
 */
public class Claimant extends Role {
    private ClaimCaseWorker caseWorker;
    private ClaimLOB claim;

    /**
     * @stereotype get
     */
    public void setCaseWorker(ClaimCaseWorker obj) {
        caseWorker = obj;
    }

    /**
     * @stereotype get
     */
    public void setClaim(ClaimLOB obj) {
        claim = obj;
    }

    /**
     * @stereotype give
     */
    public void giveClaimToCaseWorker() {
        caseWorker.setClaim(claim);
    }

    /**
     * @stereotype form
     */
    protected void maintainClaimantDetails() {
        openURL(internalClaimsSystem.maintainClaimantDetails(claim));
    }

    /**
     * @stereotype state
     */
    protected boolean claimFormObtained() {
        return (claim != null);
    }

    /**
     * @stereotype state
     */
    protected boolean claimFormIsComplete() {
        return (claim.isComplete());
    }
}

/**
 * @stereotype role
 */
public class ClaimCaseWorker extends Role {
    private Claimant claimant;
    private Underwriter underwriter;
    private ClaimLOB claim;

    /**
     * @stereotype get
     */
    public void setClaimant(Claimant claimant) {
        claimant = obj;
        this.claimant = claimant;
    }

    /**
     * @stereotype get
     */
    public void setUnderwriter(Underwriter obj) {
        underwriter = obj;
    }

    /**
     * @stereotype get
     */
    public void setClaim(ClaimLOB obj) {
        claim = obj;
    }

    /**
     * @stereotype get
     */

```

```
    */
    public void setUpdatedClaim(ClaimLOB obj) {
        claim = obj;
    }

    /**
     * @stereotype give
     */
    public void giveClaimToClaimant() {
        claimant.setClaim(claim);
    }

    /**
     * @stereotype give
     */
    public void giveClaimToUnderwriter() {
        underwriter.setClaim(claim);
    }

    /**
     * @stereotype form
     */
    protected void maintainClaimDetails() {
        openURL(internalClaimsSystem.maintainClaimDetails(claim));
    }

    /**
     * @stereotype service
     */
    protected void createClaimForm(int policyNumber) {
        claim = internalClaimSystem.newClaim(policyNumber);
    }

    /**
     * @stereotype service
     */
    protected void reserveFunds(int amount) {
        internalClaimSystem.reserveFunds(claim, amount);
    }

    /**
     * @stereotype state
     */
    protected boolean claimFormNotCreated() {
        return (claim == null);
    }

    /**
     * @stereotype state
     */
    protected boolean claimFormCreated() {
        return (claim != null);
    }

    /**
     * @stereotype state
     */
    protected boolean claimFormIsComplete() {
        return (claimForm.isComplete());
    }
}

/**
 * @stereotype role
 */
public class Underwriter extends Role {
    private ClaimCaseWorker caseWorker;
    private ClaimLOB claim;

    /**
     * @stereotype get
     */
    public void setCaseWorker(ClaimCaseWorker obj) {
        caseWorker = obj;
    }

    /**
     * @stereotype get
     */
    public void setClaim(ClaimLOB obj) {
        claim = obj;
    }
}
```

```
    }  
  
    /**  
     * @stereotype give  
     */  
    public void giveClaimToCaseWorker() {  
        caseWorker.setUpdatedClaim(claim);  
    }  
  
    /**  
     * @stereotype service  
     */  
    protected void recordDecision(boolean admit) {  
        internalClaimSystem.admit(claim, admit);  
    }  
  
    /**  
     * @stereotype state  
     */  
    protected boolean claimFormObtained() {  
        return (claim != null);  
    }  
  
    /**  
     * @stereotype state  
     */  
    protected boolean decisionGiven() {  
        return (claim.decisionGiven());  
    }  
}
```

Figure 6: Role class definitions

4 Entity

We model **lightweight objects** (LOBs) only. A LOB is a stripped down copy of a piece of business data, with only the attributes needed by a specific Role.

The principle is to separate the notional (and often only theoretical) definition of a business object from the concrete manifestations of that object as properties inside one or more Roles - LOBs that may not include all aspects of the business object. The “complete” business object may reside inside a corporate repository somewhere – but, in practice, the theory of Human Interactions shows that such a unified representation is a Platonic ideal that rarely exists, given the varied manipulations that people make of business data for their own purposes. However, we can represent a particular baselined version, complete or otherwise, of a business object as a LOB inside a Role when necessary.

Not only does this approach correspond directly to business reality, but it has various other advantages including security, network efficiency, and separation of subsystem designs. As the name suggests, a lightweight object is easier to define, implement and manage than a (notionally) complete business object.

Hence we assume that the Entities which a process model needs to access are already defined in the UML, as classes with custom stereotype <<lightweight object>>.

Each **resource** of (i.e., Entity in) a Role class is then defined as one of the following:

- an attribute belonging to a <<lightweight object>> class (effectively a component Entity)
- a primitive type
- a reference to another process object, for example a Role instance that it needs to communicate with

The figures below illustrate example a lightweight object Entity definition. See Figure 5 and Figure 6 above for examples of Entity usage in Role classes.

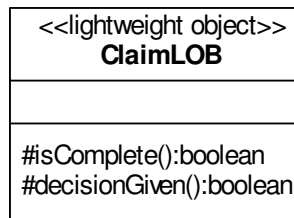


Figure 7: Lightweight object Entity class

```

/**
 * @stereotype lightweight object
 */
public class ClaimLOB {
    protected boolean isComplete() {
        // Am I complete?
    }

    protected boolean decisionGiven() {
        // Have I been admitted or denied yet?
    }
}
  
```

Figure 8: Lightweight object Entity class definition

5 Task

There are many forms of Task, including the following:

- those which call functions, such as Web services (**Service Tasks**)
- those which have a user interface (**User Tasks**)
- those which manipulate the process fabric, for example to create Role instances (**StartRole Tasks**) or assign Role instances to Actor instances (**AssignRole Task**). We look in detail below at these two examples only.

5.1 Service Task

One example of this type of Task is to invoke a particular *Web service* via **Simple Object Access Protocol** (SOAP).

The mechanics of the message formatting and delivery will be handled via the process engine according to a standard protocol such as SOAP, so there is no need to define the operation body in detail with the UML. However, it is necessary to ensure that:

- the Web service is available in the context within which the Role will run
- the correct parameters are defined for the operation.

This is achieved as follows.

A class of custom stereotype <<service provider>> is created to represent each subsystem (external or internal) which offers Web services. Within such a class, each service offered is defined as a **public** operation with stereotype <<service>>. The body of such an operation can be left empty.

For example, a class

```
<<service provider>> ClaimsSystem
```

might offer a Web service

```
<<service>> reserveFunds(claimLOB claimForm, int amount) {}:
```

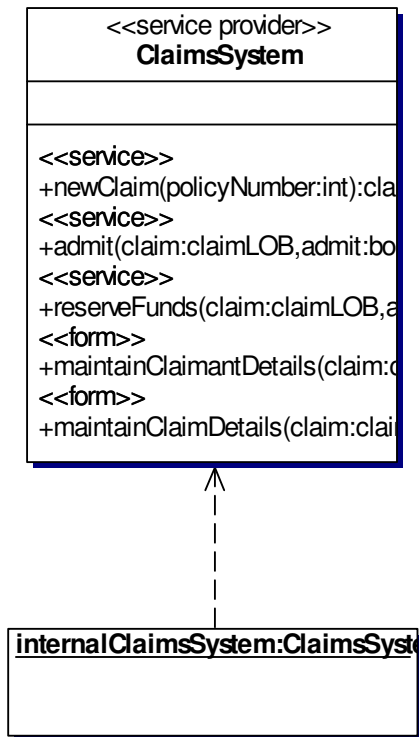


Figure 9: Service Provider class

```

/**
 * @stereotype service provider
 */
public class ClaimsSystem {
    /**
     * @stereotype service
     */
    public claimLOB newClaim(int policyNumber) {
        // Create and return a new claim for the specified policy
        // Not implemented in the UML
    }

    /**
     * @stereotype service
     */
    public void admit(claimLOB claim, boolean admit) {
        // Admit or deny a claim
        // Not implemented in the UML
    }

    /**
     * @stereotype service
     */
    public void reserveFunds(claimLOB claim, int amount) {
        // Reserve funds for a claim
        // Not implemented in the UML
    }

    /**
     * @stereotype form
     */
    public URL maintainClaimantDetails(claimLOB claim) {
        // Return the URL of a claimant form
        // Not implemented in the UML
    }

    /**
     * @stereotype form
     */
    public URL maintainClaimDetails(claimLOB claim) {
        // Return the URL of a claim form
        // Not implemented in the UML
    }
}

```

Figure 10: Service Provider class definition

Each Service Task is then defined in the appropriate Role class as a **protected** operation calling an external operation of stereotype <<service>> in an instance of a <<service provider>> class.

For example, the Role subclass ClaimCaseWorker above has an operation with Java implementation:

```

protected void reserveFunds(int amount) {
    internalClaimsSystem.reserveFunds(claim, amount);
}

```

Where parameters are required for <<service>> operation calls, the User of the Role instance supplies them at runtime.

5.2 User Task

This type of Task typically returns a *form* to the user, which they can fill in and submit.

The preferred way to implement such forms is using XSL conversion, for portability to any device: Web browser, mobile phone, television, etc. However, this is an implementation detail.

We implement such a Task in the UML as the instruction to open a specified Uniform Resource Locator (URL), passing as parameters to this URL all the information required to construct the form required and return any submitted results.

We use again the class of stereotype <<service provider>> referred to in section 5.1 above. Within such a class, each form offered is defined as a public operation with custom stereotype <<form>>, which returns a URL. The body of such an operation can be left empty, since the service provider subsystem will provide the necessary URL at runtime.

For example, the class <<service provider>> ClaimsSystem offers an operation <<form>> public URL maintainClaimDetails(claim).

We also assume that the notional top-level class Role possesses an operation

```
protected void openURL(URL formURL) {}
```

for which we do not specify a method body. This operation may open the specified URL in a browser window, for example.

Each User Task is then defined in the appropriate Role class as a protected operation which calls an external operation of stereotype <<form>>. For example, the class <<role>> ClaimCaseWorker has an operation with Java implementation:

```
protected void maintainClaimDetails() {  
    openURL(internalClaimsSystem.maintainClaimDetails(claim));  
}
```

5.3 StartRole Task

This type of Task creates a new Role instance. This is done in the UML by invoking an operation on a Role subclass with the standard stereotype <<constructor>>.

Two standard operations of this stereotype are assumed to be defined in Role:

1. public Role()
2. public Role(Actor actorInstance)

These operations are described below. Subclasses of Role may define their own operations of stereotype <<constructor>>.

5.3.1 Role()

If and only if the Role class contains no User Tasks and the new Role instance has a machine User (see section 2.3 above). In this case, an operation can be used of form

```
new roleClass()
```

where roleClass is the Role subclass for which a new instance is required. This operation invokes the default constructor which returns the new Role instance it creates.

5.3.2 Role(Actor actorInstance)

If and only if the Role class contains one or more User Tasks, it is necessary to assign the new Role instance to an Actor instance once it is created (see section 2.3 above). In this case, an operation can be used of form:

```
new roleClass(actorInstance)
```

where roleClass refers to the Role being instantiated, and actorInstance refers to the Actor to which the new Role instance should be assigned.

Role(Actor actorInstance) is a public operation of stereotype <<constructor>>, which returns the new Role instance it creates. It is defined in Role, with Java implementation:

```
public Role(Actor actorInstance) {  
    actorInstance.assign(this);  
}
```

The operation can be over-ridden in Role subclasses if required, or new methods with similar functionality created. Such operations should be of stereotype <<constructor>>, and should be standard Java-type constructors.

5.4 AssignRole Operation

The assignment of a new Actor instance to a Role instance can be carried out repeatedly during the lifetime of a Role instance, as well on instantiation.

Note however that, although a Role instance can only have a single User at a time, an Actor instance may be available to several actual people (see section 2.1 above).

The UML operation invoked by an AssignRole Operation is of the custom stereotype <<assign>>, which is explained in section 2.2.2. The operation is invoked on an Actor instance object, which must therefore appear on the class diagram containing the Role class. It takes as parameter the Role instance object (see section 5.3 above).

For example,

insuranceCaseWorker.assign(newCase)

where insuranceCaseWorker is an instance of Actor and newCase is an instance of a Role subclass.

6 Interaction

There are essentially 2 forms of Interaction: those which carry data from one Role instance to another (we term these **Message Interactions**), and those which simply trigger an event in the receiver (we term these **Signal Interactions**).

Note that an activity which in the everyday sense might be considered an “interaction” is not necessarily so in the RAD sense. For instance, sending a package by post – since you cannot generally transfer a physical object using a computer system (unless the entire picking, packing and delivery process is automated), this may be modelled using an Action rather than an Interaction.

6.1 Message Interaction

This type of Interaction is used to populate an Entity in the receiving Role(s) – in simple terms, it performs a give/get.

We implement such Interactions by considering, for each Role subclass, which attributes can be populated via an Interaction. For each such attribute, we define a public setter operation for the attribute with the custom stereotype <<get>> and form setAttribute(). For example:

```
/**
 * @stereotype get
 */
public void setClaim(claimLOB obj) {
    claim = obj;
}
```

In some cases the <<get>> operation may be required to populate more than one entity. This can be done the same way – for example, via an operation such as <<get>> setClaimAndDate(claim, date).

In each giver Role, we then define a protected operation of custom stereotype <<give>> which invokes such an operation on an attribute. For example, in Role subclass Claimant we have:

```
/**
 * @stereotype give
 */
public void giveClaimToCaseWorker() {
    caseWorker.setClaim(claim);
}
```

See section 8 below for details of how the <<give>> operations are used in statechart diagrams.

Note that it may be necessary to implement more than one <<get>> operation for a single attribute if the attribute is received more than once during the life of the Role in different States (for example, the ClaimCaseWorker receives an updated claim object from the Claimant and the Underwriter at different times).

6.2 Signal Interaction

The other form of Interaction is a signal, which does not transfer any data. We do not use an operation in this case, but an *event* with the standard stereotype <<signal>> – for example, <<signal>> startLogging().

In the UML, events are defined on the class diagram of the class in which they occur. We show their usage on statechart diagrams.

Signal parameters are shown as attributes. However, the parameters to a signal cannot be used in the Role definition, since an event is not a real class (it has no operations or relationships to real classes). Hence the only reason to use parameters would be to place a guard condition on an event which used the signal (see below). If it is necessary to preserve parameters from a signal for use in the Role body, a <<get>> operation should be used instead.

7 Activity

A RAD Activity is a set of Tasks which can be called (repeated and interleaved as required), when the Role is in a particular State.

We define each Activity in a Role class as a set of Task calls within a particular State on a statechart diagram. See section 8 below for details.

8 State

The preceding sections considered UML class diagrams. We now turn our attention to UML statechart diagrams, to see how these can be used to define Role-Activity state machines.

Each Role class is depicted not only in a class diagram but also in a statechart. Within the statechart is shown each distinct State in the Role's state machine.

Each State is considered to give rise to a set of possible Activities, each of which can include Tasks, Interactions (in one or many directions), or both. To define this behaviour in the UML, we make use of **internal transitions**. An internal transition is a transition which remains in a single State rather than a transition that involves two states.

Statecharts for the Roles in our example RAD are shown below. The conventions used are explained in the following subsections.

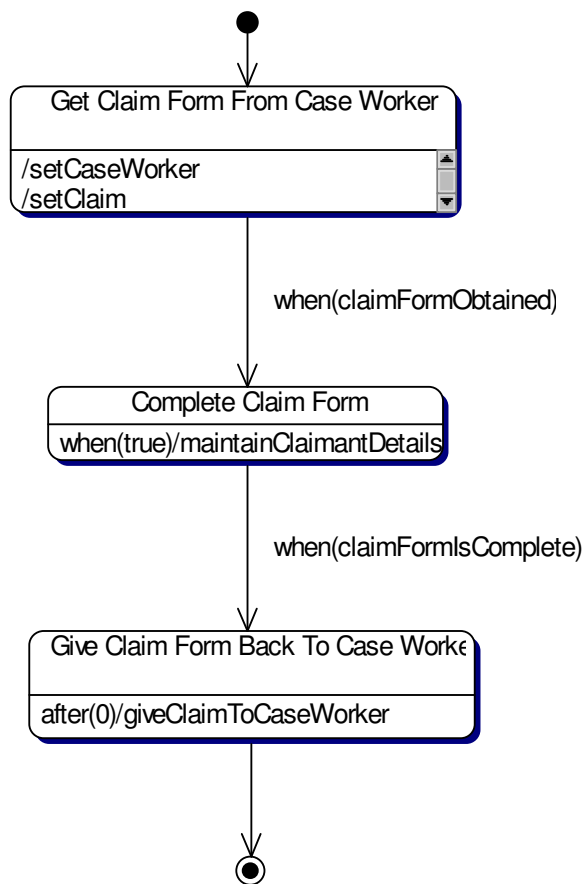


Figure 11: Claimant Statechart

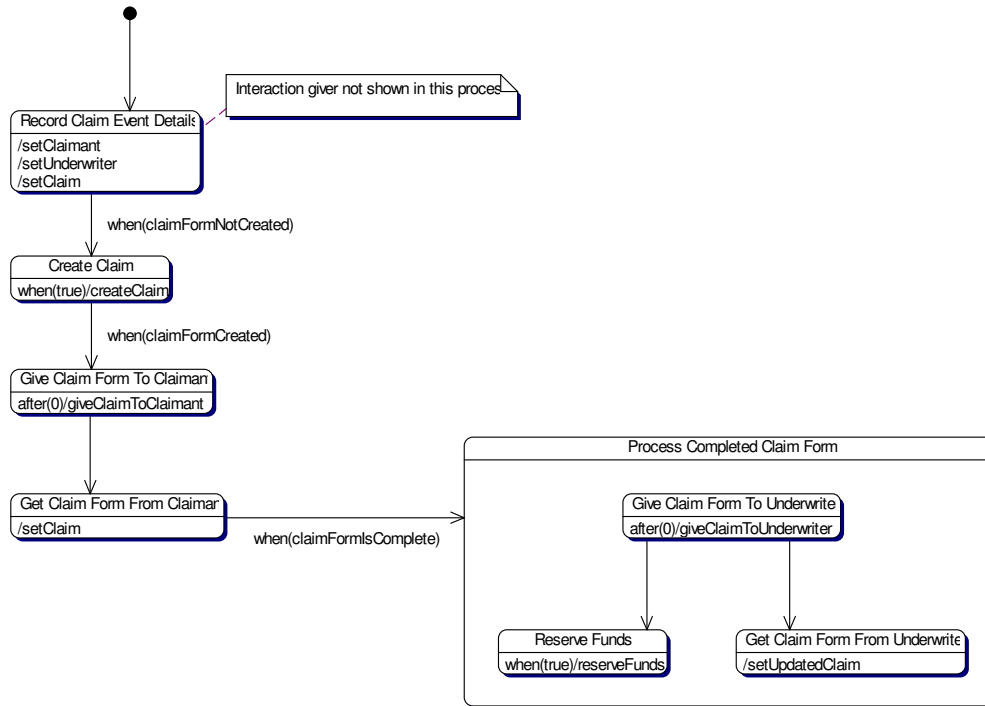


Figure 12: ClaimCaseWorker Statechart

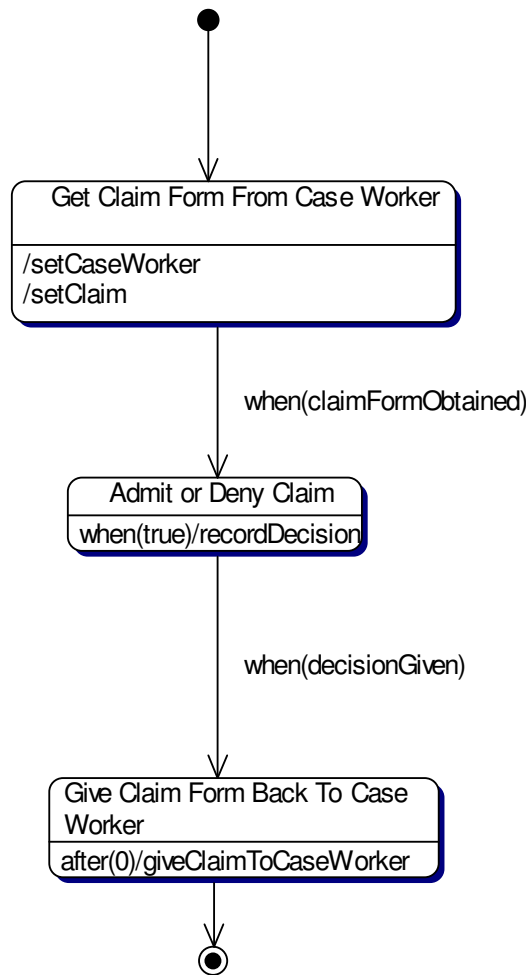


Figure 13: Underwriter Statechart

8.1 Internal Transitions

The internal transition **event-signature** and **action expression** are described below for the different types of activity in a State.

8.1.1 Activity

A RAD Activity consists of one or more Tasks. Each Task in an Activity is an internal transition such as

when (true) / reserveFunds(claim, amount)

where:

- The **event-signature** is a ChangeEvent of form “when (true)”. This allows the Tasks in the Activity to be repeated and interleaved as required. If a Task has a non-vacuous pre-condition (separate from that of the containing State), it moved to another State with an appropriate pre-condition.
- The **action-expression** is a Role class operation, with parameter(s) as appropriate. The transition may contain *more than one action-expression* – the relative order of the expressions determines

their execution order. This is used when the Task has individual steps which must be executed in sequence – this is a lower level than can be modelled graphically via RAD, but may be necessary for complete process implementation such as would be provided by a process engine.

8.1.2 Interaction giver

Each delivery is an internal transition such as

after (0) / giveClaimFormToCaseWorker()

where:

- The **event-signature** is a TimeEvent, of form “after (0)”. This means that the Interaction will fire once only, on entry to the State. Should a Role instance leave and re-enter the State, the internal transition will fire again.
- The **action-expression** is a send-clause using an operation of stereotype <<give>>. The transition may contain more than one action-expression – the relative order of the expressions determines their execution order. This can be used when there is more than one recipient in the Interaction.

8.1.3 Interaction receiver

Each receipt is an internal transition such as

setClaim(claim)

or

startLogging()

where:

- The **event-signature** is either a CallEvent invoking an operation of stereotype <<get>> or a SignalEvent invoking an event of stereotype <<signal>>, in each case with parameters as appropriate.
- There is no action-expression.

8.2 Guard Conditions On Internal Transitions

There is generally no need for a guard-condition on internal transitions, although if required one can be specified.

8.3 Transitions Between States

There may be multiple transitions leaving a State. We restrict the event on each such transition to be a ChangeEvent, of form “when (**booleanExpression**)”, where the guard condition **booleanExpression** defines *the pre-condition of the subsequent State*.

Guard conditions can be expressed using:

- Parameters of the event – for example, if the event is startLogging(logFlag), the guard condition might be when (logFlag).
- Attributes in the Role class – for example,
when (claim == null).
- Operations in the Role class, of stereotype <<state>> (see section 3, above) – for example,
when (claimFormIsComplete())
- concurrent States of the current machine, for example “**in State1**” or “**not in State2**”. If the same State name occurs in different Composite State regions of the overall machine (a practice not to be advised), State names may be fully qualified by the nested States that contain them, yielding path names of the form “State 1::State 2::State 3”.

We do not use an action-expression on transitions between States, only on internal transitions.

8.4 Post-conditions

We do not model post-conditions of a State, for the following reasons:

1. There is no need - a Role instance is deemed by the workflow engine to have left a State once its pre-condition no longer holds.
2. The nature of a true state machine means the full post-condition for a State cannot actually be known. After completing the operations in one State, a Role can be in any other State(s) in the statechart depending on the values of its resources. A Role is not a flowchart.

Hence the transitions shown in a Role statechart are only the *expected* ones, and in fact an instance of the Role may follow any, all, or none of them.

A further implication of this approach is that a Role instance may be in more than one State at a time. This is in fact true for all UML state machines.

8.5 Common Pre-conditions

If a single ChangeEvent is used as the pre-condition to more than one State, the UML specification dictates that only one of the resulting States will be entered. This is not the behaviour required of a Role-Activity state machine. Hence, if a pre-condition applies to more than one State, one of the following mechanisms should be used instead.

8.5.1 Complex Transitions

Complex Transitions are transitions which have more than one source or destination (or both):

- **Multi-source transitions** can be used to define a destination State with many pre-conditions, any one of which being true is sufficient for the destination State to hold.
- **Multi-destination transitions**, on the other hand, can be used for the case described above, in which a single pre-condition applies to multiple destination States. This corresponds to a simple use of *refinement* in Role-Activity Diagramming, in which the activities at the head of each refinement branch all have the same pre-condition (with no additional individual pre-conditions) and may be able to execute concurrently.

8.5.2 Transition Branching

Transition Branching is a UML mechanism which allows a single transition to be extended to a tree of decision symbols. This is equivalent to a set of individual transitions, one for each path through the tree. Assuming that only ChangeEvents are used (in accordance with the approach defined above), the guard condition of each individual transition is the conjunction of all the guard conditions along the path.

This corresponds to more complex refinement in Role-Activity Diagramming, in which the activities at the head of each refinement branch have different pre-conditions.

8.5.3 Composite States

Composite States is a UML mechanism which allows States to be enclosed in other States, either concurrently or as a nested statechart.

For our purposes, both allow the Role to be in more than one State at a time. States can be nested to any level by either method. We take the pre-condition of a component State to be its own pre-condition in conjunction with the pre-conditions of all enclosing States. Hence, if the pre-condition of an enclosing State ceases to hold, a Role instance will leave all component States as well.

The two forms of Composite States have the following RAD equivalents:

- **Concurrent** composite States correspond to simple part-refinement in Role-Activity Diagramming (like multi-destination transitions).

- **Nested** composite States correspond to nested processes in Role-Activity Diagramming – transitions to and from nested States should be drawn to the enclosing State boundary (although the UML allows them to be connected internally, this is misleading in the context of Role-Activity Diagramming).

8.6 History State Indicators

This is a UML construct which allows a State to remember, and restart from, the situation it was in when it was last entered. For nested States, a History State Indicator can refer either to the top-level State (**shallow**) or to the lowest-level nested State from which the State was last exited (**deep**).

We do not use History State Indicators in Role-Activity Diagramming.

9 Process Model

In this section we discuss how to represent in the UML an entire process model.

9.1 Partitioning Roles Into Processes

Roles can be partitioned into processes according to the following rule:

*one Role class belongs to the same process as another if it sends a stereotyped **give** message to the other in a statechart diagram.*

Using this rule the process modeller can divide Role classes into separate **packages**, with each package corresponding to a single process model.

Note however that typically many processes inside an organization overlap in some way. Hence it is uncommon to have a great number of distinct packages, except when modelling at the highest levels.

9.2 Depicting An Entire Process

It is necessary to show in some way the interaction between the various Role classes in a process package. In the UML this is done using an **object diagram**.

We can create such a diagram to show one or more Role instances for each Role in the process, nesting the statechart diagram for each Role instance within the symbol for the Role instance itself.

This allows many versions of a process to be depicted, to illustrate multiple possible behaviours depending on the number of instances of each Role. Such diagrams add no semantics to the process but may be useful to communicate how the process operates in different situations.

Messages from Role instances to each other can be shown using dashed lines, labelled with the event name and arguments of the CallEvent or SignalEvent that occurs in the receiver. Each interaction gives rise to one or more messages from one Role instance to another (see section 8.1 above). Both the sender and receiver of such messages are internal transitions.

A Example Process Model Exported To XMI

The following code is the UML for the example process model in this document exported to XMI (IBM XMI format).

```
<?xml version = '1.0' encoding = 'ISO-8859-1' ?>
<!DOCTYPE XMI SYSTEM 'uml11i.dtd'
[
  <!ELEMENT ixtd ANY>
  <!ATTLIST ixtd
    xmi.id ID #IMPLIED
    xmi.label CDATA #IMPLIED
    xmi.uuid CDATA #IMPLIED
    xml:link CDATA #IMPLIED
    inline (true|false) #IMPLIED
    actuate (show|user) #IMPLIED
    href CDATA #IMPLIED
    role CDATA #IMPLIED
    title CDATA #IMPLIED
    show (embed|replace|new) #IMPLIED
    behavior CDATA #IMPLIED
    xmi.idref IDREF #IMPLIED
    xmi.uuidref CDATA #IMPLIED
    ixtn CDATA #IMPLIED
    ixtt CDATA #IMPLIED
    ixtdl CDATA #IMPLIED
    ixta CDATA #IMPLIED>

  <!ELEMENT ixts (ixttv)+>
  <!ATTLIST ixts
    s CDATA #REQUIRED>

  <!ELEMENT ixttv EMPTY>
  <!ATTLIST ixttv
    t CDATA #REQUIRED
    v CDATA #REQUIRED>
]
>
<XMI xmi.version = '1.0'>
  <XMI.header>
    <XMI.documentation>
      <XMI.exporter>Together</XMI.exporter>
      <XMI.exporterVersion>5.0</XMI.exporterVersion>
    </XMI.documentation>
    <XMI.metamodel xmi.name = 'UML' xmi.version = '1.1' />
  </XMI.header>
  <XMI.content>
    <Model_Management.Model xmi.id = 'txmiidl' >
    <Foundation.Core.ModelElement.name>ClaimExample</Foundation.Core.ModelElement.name>
    <Foundation.Core.ModelElement.visibility xmi.value = 'private' />
    <Foundation.Core.GeneralizableElement.isRoot xmi.value = 'false' />
    <Foundation.Core.GeneralizableElement.isLeaf xmi.value = 'false' />
    <Foundation.Core.GeneralizableElement.isAbstract xmi.value = 'false' />
    <Foundation.Core.ModelElement.taggedValue>
      <Foundation.Extension_Mechanisms.TaggedValue>

    <Foundation.Extension_Mechanisms.TaggedValue.tag>RationalRose:Tool#1</Foundation.Extension_Mechani
sms.TaggedValue.tag>

    <Foundation.Extension_Mechanisms.TaggedValue.value>Java</Foundation.Extension_Mechanisms.TaggedVal
ue.value>
    </Foundation.Extension_Mechanisms.TaggedValue>
    </Foundation.Core.ModelElement.taggedValue>
    <Foundation.Core.ModelElement.taggedValue>
      <Foundation.Extension_Mechanisms.TaggedValue>

    <Foundation.Extension_Mechanisms.TaggedValue.tag>documentation</Foundation.Extension_Mechanisms.Ta
ggedValue.tag>
      <Foundation.Extension_Mechanisms.TaggedValue.value>
    </Foundation.Extension_Mechanisms.TaggedValue.value>
    </Foundation.Extension_Mechanisms.TaggedValue>
    </Foundation.Core.ModelElement.taggedValue>
    <Foundation.Core.ModelElement.taggedValue>
      <Foundation.Extension_Mechanisms.TaggedValue>

    <Foundation.Extension_Mechanisms.TaggedValue.tag>alias</Foundation.Extension_Mechanisms.TaggedValu
e.tag>
      <Foundation.Extension_Mechanisms.TaggedValue.value>Class
Diagram</Foundation.Extension_Mechanisms.TaggedValue.value>
    </Foundation.Extension_Mechanisms.TaggedValue>
    </Foundation.Core.ModelElement.taggedValue>
  </XMI.content>
</XMI>
```

```

    <Foundation.Core.Namespace.ownedElement>
<Foundation.Core.Class xmi.id = 'txmiid2' >
  <Foundation.Core.ModelElement.name>Actor</Foundation.Core.ModelElement.name>
  <Foundation.Core.ModelElement.visibility xmi.value = 'public' />
  <Foundation.Core.GeneralizableElement.isRoot xmi.value = 'false' />
  <Foundation.Core.GeneralizableElement.isLeaf xmi.value = 'false' />
  <Foundation.Core.GeneralizableElement.isAbstract xmi.value = 'false' />
  <Foundation.Core.Class.isActive xmi.value = 'false' />
  <Foundation.Core.ModelElement.stereotype>
    <Foundation.Extension_Mechanisms.Stereotype xmi.idref = 'txmiid3.S' />
  </Foundation.Core.ModelElement.stereotype>
  <Foundation.Core.ModelElement.namespace>
    <Model_Management.Package xmi.idref = 'txmiid1' />
  </Foundation.Core.ModelElement.namespace>
<Foundation.Core.ModelElement.taggedValue>
  <Foundation.Extension_Mechanisms.TaggedValue>

<Foundation.Extension_Mechanisms.TaggedValue.tag>documentation</Foundation.Extension_Mechanisms.TaggedValue.tag>
  <Foundation.Extension_Mechanisms.TaggedValue.value>
  </Foundation.Extension_Mechanisms.TaggedValue.value>
</Foundation.Extension_Mechanisms.TaggedValue>
</Foundation.Core.ModelElement.taggedValue>
  <Foundation.Core.Classifier.feature>
<Foundation.Core.Attribute xmi.id = 'txmiid4.a' >
  <Foundation.Core.ModelElement.name>roles</Foundation.Core.ModelElement.name>
  <Foundation.Core.ModelElement.visibility xmi.value = 'private' />
  <Foundation.Core.Feature.ownerScope xmi.value = 'classifier' />

<Foundation.Core.StructuralFeature.multiplicity>1..1</Foundation.Core.StructuralFeature.multiplicity>
  <Foundation.Core.StructuralFeature.changeable xmi.value = 'none' />
  <Foundation.Core.StructuralFeature.targetScope xmi.value = 'instance' />
  <Foundation.Core.Attribute.initialValue>
    <Foundation.Data_Types.Expression>
      <Foundation.Data_Types.Expression.language></Foundation.Data_Types.Expression.language>
      <Foundation.Data_Types.Expression.body>new Vector()</Foundation.Data_Types.Expression.body>
    </Foundation.Data_Types.Expression>
  </Foundation.Core.Attribute.initialValue>
  <Foundation.Core.StructuralFeature.type>
    <Foundation.Core.DataType xmi.idref = 'txmiid5' />
  </Foundation.Core.StructuralFeature.type>
<Foundation.Core.ModelElement.taggedValue>
  <Foundation.Extension_Mechanisms.TaggedValue>

<Foundation.Extension_Mechanisms.TaggedValue.tag>documentation</Foundation.Extension_Mechanisms.TaggedValue.tag>
  <Foundation.Extension_Mechanisms.TaggedValue.value>
  </Foundation.Extension_Mechanisms.TaggedValue.value>
</Foundation.Extension_Mechanisms.TaggedValue>
</Foundation.Core.ModelElement.taggedValue>
  <Foundation.Core.Attribute>
<Foundation.Core.Operation xmi.id = 'txmiid6.O' >
  <Foundation.Core.ModelElement.name>assign</Foundation.Core.ModelElement.name>
  <Foundation.Core.ModelElement.visibility xmi.value = 'public' />
  <Foundation.Core.Feature.ownerScope xmi.value = 'instance' />
  <Foundation.Core.BehavioralFeature.isQuery xmi.value = 'false' />
  <Foundation.Core.Operation.specification></Foundation.Core.Operation.specification>
  <Foundation.Core.Operation.isPolymorphic xmi.value = 'false' />
  <Foundation.Core.Operation.concurrency xmi.value = 'sequential' />
  <Foundation.Core.ModelElement.stereotype>
    <Foundation.Extension_Mechanisms.Stereotype xmi.idref = 'txmiid7.S' />
  </Foundation.Core.ModelElement.stereotype>
<Foundation.Core.ModelElement.taggedValue>
  <Foundation.Extension_Mechanisms.TaggedValue>

<Foundation.Extension_Mechanisms.TaggedValue.tag>documentation</Foundation.Extension_Mechanisms.TaggedValue.tag>
  <Foundation.Extension_Mechanisms.TaggedValue.value>
  </Foundation.Extension_Mechanisms.TaggedValue.value>
</Foundation.Extension_Mechanisms.TaggedValue>
</Foundation.Core.ModelElement.taggedValue>
  <Foundation.Core.BehavioralFeature.parameter>
<Foundation.Core.Parameter xmi.id = 'txmiid6.Return' >
  <Foundation.Core.ModelElement.name>assign.Return</Foundation.Core.ModelElement.name>
  <Foundation.Core.ModelElement.visibility xmi.value = 'private' />
  <Foundation.Core.Parameter.defaultValue>
    <Foundation.Data_Types.Expression>
      <Foundation.Data_Types.Expression.language></Foundation.Data_Types.Expression.language>
      <Foundation.Data_Types.Expression.body></Foundation.Data_Types.Expression.body>
    </Foundation.Data_Types.Expression>
  </Foundation.Core.Parameter.defaultValue>

```

```

    <Foundation.Core.Parameter.kind xmi.value = 'return' />
    <Foundation.Core.Parameter.type>
    <Foundation.Core.DataType xmi.idref = 'txmiid8' />
  </Foundation.Core.Parameter.type>
</Foundation.Core.Parameter>
<Foundation.Core.Parameter xmi.id = 'txmiid6.1' >
  <Foundation.Core.ModelElement.name>roleInstance</Foundation.Core.ModelElement.name>
  <Foundation.Core.ModelElement.visibility xmi.value = 'private' />
  <Foundation.Core.Parameter.defaultValue>
  <Foundation.Data_Types.Expression>
    <Foundation.Data_Types.Expression.language></Foundation.Data_Types.Expression.language>
    <Foundation.Data_Types.Expression.body></Foundation.Data_Types.Expression.body>
  </Foundation.Data_Types.Expression>
  </Foundation.Core.Parameter.defaultValue>
  <Foundation.Core.Parameter.kind xmi.value = 'inout' />
  <Foundation.Core.Parameter.type>
  <Foundation.Core.DataType xmi.idref = 'txmiid9' />
  </Foundation.Core.Parameter.type>
</Foundation.Core.Parameter>
</Foundation.Core.BehavioralFeature.parameter>
</Foundation.Core.Operation>
</Foundation.Core.Classifier.feature>
</Foundation.Core.Class>
<Foundation.Core.Class xmi.id = 'txmiida' >
  <Foundation.Core.ModelElement.name>ClaimCaseWorker</Foundation.Core.ModelElement.name>
  <Foundation.Core.ModelElement.visibility xmi.value = 'public' />
  <Foundation.Core.GeneralizableElement.isRoot xmi.value = 'false' />
  <Foundation.Core.GeneralizableElement.isLeaf xmi.value = 'false' />
  <Foundation.Core.GeneralizableElement.isAbstract xmi.value = 'false' />
  <Foundation.Core.Class.isActive xmi.value = 'false' />
  <Foundation.Core.ModelElement.stereotype>
  <Foundation.Extension_Mechanisms.Stereotype xmi.idref = 'txmiidb.S' />
  </Foundation.Core.ModelElement.stereotype>
  <Foundation.Core.ModelElement.namespace>
  <Model_Management.Package xmi.idref = 'txmiid1' />
  </Foundation.Core.ModelElement.namespace>
  <Foundation.Core.GeneralizableElement.generalization>
  <Foundation.Core.Generalization xmi.idref = 'ClaimCaseWorkerRole.G' />
  </Foundation.Core.GeneralizableElement.generalization>
  <Foundation.Core.Classifier.associationEnd>
  <Foundation.Core.AssociationEnd xmi.idref = 'txmiidc.CE' />
  <Foundation.Core.AssociationEnd xmi.idref = 'txmiidd.CE' />
  <Foundation.Core.AssociationEnd xmi.idref = 'txmiide.CE' />
  </Foundation.Core.Classifier.associationEnd>
  <Foundation.Core.ModelElement.taggedValue>
  <Foundation.Extension_Mechanisms.TaggedValue>

  <Foundation.Extension_Mechanisms.TaggedValue.tag>documentation</Foundation.Extension_Mechanisms.TaggedValue.tag>
  <Foundation.Extension_Mechanisms.TaggedValue.value>
  </Foundation.Extension_Mechanisms.TaggedValue.value>
  </Foundation.Extension_Mechanisms.TaggedValue>
</Foundation.Core.ModelElement.taggedValue>
  <Foundation.Core.Classifier.feature>
  <Foundation.Core.Attribute xmi.id = 'txmiidf.a' >
  <Foundation.Core.ModelElement.name>claimant</Foundation.Core.ModelElement.name>
  <Foundation.Core.ModelElement.visibility xmi.value = 'private' />
  <Foundation.Core.Feature.ownerScope xmi.value = 'classifier' />

  <Foundation.Core.StructuralFeature.multiplicity>1..1</Foundation.Core.StructuralFeature.multiplicity>
  <Foundation.Core.StructuralFeature.changeable xmi.value = 'none' />
  <Foundation.Core.StructuralFeature.targetScope xmi.value = 'instance' />
  <Foundation.Core.Attribute.initialValue>
  <Foundation.Data_Types.Expression>
    <Foundation.Data_Types.Expression.language></Foundation.Data_Types.Expression.language>
    <Foundation.Data_Types.Expression.body></Foundation.Data_Types.Expression.body>
  </Foundation.Data_Types.Expression>
  </Foundation.Core.Attribute.initialValue>
  <Foundation.Core.StructuralFeature.type>
  <Foundation.Core.DataType xmi.idref = 'txmiid10' />
  </Foundation.Core.StructuralFeature.type>
  <Foundation.Core.ModelElement.taggedValue>
  <Foundation.Extension_Mechanisms.TaggedValue>

  <Foundation.Extension_Mechanisms.TaggedValue.tag>documentation</Foundation.Extension_Mechanisms.TaggedValue.tag>
  <Foundation.Extension_Mechanisms.TaggedValue.value>
  </Foundation.Extension_Mechanisms.TaggedValue.value>
  </Foundation.Extension_Mechanisms.TaggedValue>
</Foundation.Core.ModelElement.taggedValue>
</Foundation.Core.Attribute>

```

RADs and the UML

©2005 Role Modellers Ltd

www.rolemodellers.com

```
<Foundation.Core.Attribute xmi.id = 'txmiid11.a' >
  <Foundation.Core.ModelElement.name>underwriter</Foundation.Core.ModelElement.name>
  <Foundation.Core.ModelElement.visibility xmi.value = 'private' />
  <Foundation.Core.Feature.ownerScope xmi.value = 'classifier' />

<Foundation.Core.StructuralFeature.multiplicity>1..1</Foundation.Core.StructuralFeature.multiplicity>
  <Foundation.Core.StructuralFeature.changeable xmi.value = 'none' />
  <Foundation.Core.StructuralFeature.targetScope xmi.value = 'instance' />
  <Foundation.Core.Attribute.initialValue>
    <Foundation.Data_Types.Expression>
      <Foundation.Data_Types.Expression.language></Foundation.Data_Types.Expression.language>
      <Foundation.Data_Types.Expression.body></Foundation.Data_Types.Expression.body>
    </Foundation.Data_Types.Expression>
  </Foundation.Core.Attribute.initialValue>
  <Foundation.Core.StructuralFeature.type>
    <Foundation.Core.DataType xmi.idref = 'txmiid12' />
  </Foundation.Core.StructuralFeature.type>
  <Foundation.Core.ModelElement.taggedValue>
    <Foundation.Extension_Mechanisms.TaggedValue>
      <Foundation.Extension_Mechanisms.TaggedValue.tag>documentation</Foundation.Extension_Mechanisms.TaggedValue.tag>
      <Foundation.Extension_Mechanisms.TaggedValue.value>
        <Foundation.Extension_Mechanisms.TaggedValue.value>
      </Foundation.Extension_Mechanisms.TaggedValue>
    </Foundation.Core.ModelElement.taggedValue>
  </Foundation.Core.Attribute>
  <Foundation.Core.Attribute xmi.id = 'txmiid13.a' >
    <Foundation.Core.ModelElement.name>claim</Foundation.Core.ModelElement.name>
    <Foundation.Core.ModelElement.visibility xmi.value = 'private' />
    <Foundation.Core.Feature.ownerScope xmi.value = 'classifier' />

  <Foundation.Core.StructuralFeature.multiplicity>1..1</Foundation.Core.StructuralFeature.multiplicity>
    <Foundation.Core.StructuralFeature.changeable xmi.value = 'none' />
    <Foundation.Core.StructuralFeature.targetScope xmi.value = 'instance' />
    <Foundation.Core.Attribute.initialValue>
      <Foundation.Data_Types.Expression>
        <Foundation.Data_Types.Expression.language></Foundation.Data_Types.Expression.language>
        <Foundation.Data_Types.Expression.body></Foundation.Data_Types.Expression.body>
      </Foundation.Data_Types.Expression>
    </Foundation.Core.Attribute.initialValue>
    <Foundation.Core.StructuralFeature.type>
      <Foundation.Core.DataType xmi.idref = 'txmiid14' />
    </Foundation.Core.StructuralFeature.type>
    <Foundation.Core.ModelElement.taggedValue>
      <Foundation.Extension_Mechanisms.TaggedValue>
        <Foundation.Extension_Mechanisms.TaggedValue.tag>documentation</Foundation.Extension_Mechanisms.TaggedValue.tag>
        <Foundation.Extension_Mechanisms.TaggedValue.value>
          <Foundation.Extension_Mechanisms.TaggedValue.value>
        </Foundation.Extension_Mechanisms.TaggedValue>
      </Foundation.Core.ModelElement.taggedValue>
    </Foundation.Core.Attribute>
    <Foundation.Core.Operation xmi.id = 'txmiid15.O' >
      <Foundation.Core.ModelElement.name>setClaimant</Foundation.Core.ModelElement.name>
      <Foundation.Core.ModelElement.visibility xmi.value = 'public' />
      <Foundation.Core.Feature.ownerScope xmi.value = 'instance' />
      <Foundation.Core.BehavioralFeature.isQuery xmi.value = 'false' />
      <Foundation.Core.Operation.specification></Foundation.Core.Operation.specification>
      <Foundation.Core.Operation.isPolymorphic xmi.value = 'false' />
      <Foundation.Core.Operation.concurrency xmi.value = 'sequential' />
      <Foundation.Core.ModelElement.stereotype>
        <Foundation.Extension_Mechanisms.Stereotype xmi.idref = 'txmiid16.S' />
      </Foundation.Core.ModelElement.stereotype>
    <Foundation.Core.ModelElement.taggedValue>
      <Foundation.Extension_Mechanisms.TaggedValue>
        <Foundation.Extension_Mechanisms.TaggedValue.tag>documentation</Foundation.Extension_Mechanisms.TaggedValue.tag>
        <Foundation.Extension_Mechanisms.TaggedValue.value>
          <Foundation.Extension_Mechanisms.TaggedValue.value>
        </Foundation.Extension_Mechanisms.TaggedValue>
      </Foundation.Core.ModelElement.taggedValue>
    <Foundation.Core.BehavioralFeature.parameter>
      <Foundation.Core.Parameter xmi.id = 'txmiid15.Return' >
        <Foundation.Core.ModelElement.name>setClaimant.Return</Foundation.Core.ModelElement.name>
        <Foundation.Core.ModelElement.visibility xmi.value = 'private' />
        <Foundation.Core.Parameter.defaultValue>
          <Foundation.Data_Types.Expression>
```

RADs and the UML

©2005 Role Modellers Ltd

www.rolemodellers.com

```
<Foundation.Data_Types.Expression.language></Foundation.Data_Types.Expression.language>
<Foundation.Data_Types.Expression.body></Foundation.Data_Types.Expression.body>
</Foundation.Data_Types.Expression>
</Foundation.Core.Parameter.defaultValue>
<Foundation.Core.Parameter.kind xmi.value = 'return' />
<Foundation.Core.Parameter.type>
  <Foundation.Core.DataType xmi.idref = 'txmiid8' />
</Foundation.Core.Parameter.type>
</Foundation.Core.Parameter>
<Foundation.Core.Parameter xmi.id = 'txmiid15.1' >
  <Foundation.Core.ModelElement.name>claimant</Foundation.Core.ModelElement.name>
  <Foundation.Core.ModelElement.visibility xmi.value = 'private' />
  <Foundation.Core.Parameter.defaultValue>
    <Foundation.Data_Types.Expression>
      <Foundation.Data_Types.Expression.language></Foundation.Data_Types.Expression.language>
      <Foundation.Data_Types.Expression.body></Foundation.Data_Types.Expression.body>
    </Foundation.Data_Types.Expression>
  </Foundation.Core.Parameter.defaultValue>
  <Foundation.Core.Parameter.kind xmi.value = 'inout' />
  <Foundation.Core.Parameter.type>
    <Foundation.Core.DataType xmi.idref = 'txmiid10' />
  </Foundation.Core.Parameter.type>
</Foundation.Core.Parameter>
</Foundation.Core.BehavioralFeature.parameter>
</Foundation.Core.Operation>
<Foundation.Core.Operation xmi.id = 'txmiid17.0' >
  <Foundation.Core.ModelElement.name>setUnderwriter</Foundation.Core.ModelElement.name>
  <Foundation.Core.ModelElement.visibility xmi.value = 'public' />
  <Foundation.Core.Feature.ownerScope xmi.value = 'instance' />
  <Foundation.Core.BehavioralFeature.isQuery xmi.value = 'false' />
  <Foundation.Core.Operation.specification></Foundation.Core.Operation.specification>
  <Foundation.Core.Operation.isPolymorphic xmi.value = 'false' />
  <Foundation.Core.Operation.concurrency xmi.value = 'sequential' />
  <Foundation.Core.ModelElement.stereotype>
    <Foundation.Extension_Mechanisms.Stereotype xmi.idref = 'txmiid16.S' />
  </Foundation.Core.ModelElement.stereotype>
  </Foundation.Core.ModelElement.taggedValue>
  <Foundation.Core.ModelElement.taggedValue>
    <Foundation.Extension_Mechanisms.TaggedValue.tag>documentation</Foundation.Extension_Mechanisms.TaggedValue.tag>
    <Foundation.Extension_Mechanisms.TaggedValue.value>
      </Foundation.Extension_Mechanisms.TaggedValue.value>
    </Foundation.Extension_Mechanisms.TaggedValue>
  </Foundation.Core.ModelElement.taggedValue>
</Foundation.Core.BehavioralFeature.parameter>
<Foundation.Core.Parameter xmi.id = 'txmiid17.Return' >
  <Foundation.Core.ModelElement.name>setUnderwriter.Return</Foundation.Core.ModelElement.name>
  <Foundation.Core.ModelElement.visibility xmi.value = 'private' />
  <Foundation.Core.Parameter.defaultValue>
    <Foundation.Data_Types.Expression>
      <Foundation.Data_Types.Expression.language></Foundation.Data_Types.Expression.language>
      <Foundation.Data_Types.Expression.body></Foundation.Data_Types.Expression.body>
    </Foundation.Data_Types.Expression>
  </Foundation.Core.Parameter.defaultValue>
  <Foundation.Core.Parameter.kind xmi.value = 'return' />
  <Foundation.Core.Parameter.type>
    <Foundation.Core.DataType xmi.idref = 'txmiid8' />
  </Foundation.Core.Parameter.type>
</Foundation.Core.Parameter>
<Foundation.Core.Parameter xmi.id = 'txmiid17.1' >
  <Foundation.Core.ModelElement.name>obj</Foundation.Core.ModelElement.name>
  <Foundation.Core.ModelElement.visibility xmi.value = 'private' />
  <Foundation.Core.Parameter.defaultValue>
    <Foundation.Data_Types.Expression>
      <Foundation.Data_Types.Expression.language></Foundation.Data_Types.Expression.language>
      <Foundation.Data_Types.Expression.body></Foundation.Data_Types.Expression.body>
    </Foundation.Data_Types.Expression>
  </Foundation.Core.Parameter.defaultValue>
  <Foundation.Core.Parameter.kind xmi.value = 'inout' />
  <Foundation.Core.Parameter.type>
    <Foundation.Core.DataType xmi.idref = 'txmiid12' />
  </Foundation.Core.Parameter.type>
</Foundation.Core.Parameter>
</Foundation.Core.BehavioralFeature.parameter>
</Foundation.Core.Operation>
<Foundation.Core.Operation xmi.id = 'txmiid18.0' >
  <Foundation.Core.ModelElement.name>setClaim</Foundation.Core.ModelElement.name>
  <Foundation.Core.ModelElement.visibility xmi.value = 'public' />
  <Foundation.Core.Feature.ownerScope xmi.value = 'instance' />
  <Foundation.Core.BehavioralFeature.isQuery xmi.value = 'false' />
  <Foundation.Core.Operation.specification></Foundation.Core.Operation.specification>
```

RADs and the UML

©2005 Role Modellers Ltd

www.rolemodellers.com

```
<Foundation.Core.Operation.isPolymorphic xmi.value = 'false' />
<Foundation.Core.Operation.concurrency xmi.value = 'sequential' />
  <Foundation.Core.ModelElement.stereotype>
    <Foundation.Extension_Mechanisms.Stereotype xmi.idref = 'txmiid16.S' />
  </Foundation.Core.ModelElement.stereotype>
</Foundation.Core.ModelElement.taggedValue>
<Foundation.Extension_Mechanisms.TaggedValue>

<Foundation.Extension_Mechanisms.TaggedValue.tag>documentation</Foundation.Extension_Mechanisms.TaggedValue.tag>
  <Foundation.Extension_Mechanisms.TaggedValue.value>
</Foundation.Extension_Mechanisms.TaggedValue.value>
</Foundation.Extension_Mechanisms.TaggedValue>
</Foundation.Core.ModelElement.taggedValue>
<Foundation.Core.BehavioralFeature.parameter>
<Foundation.Core.Parameter xmi.id = 'txmiid18.Return' >
  <Foundation.Core.ModelElement.name>setClaim.Return</Foundation.Core.ModelElement.name>
  <Foundation.Core.ModelElement.visibility xmi.value = 'private' />
  <Foundation.Core.Parameter.defaultValue>
    <Foundation.Data_Types.Expression>
      <Foundation.Data_Types.Expression.language></Foundation.Data_Types.Expression.language>
      <Foundation.Data_Types.Expression.body></Foundation.Data_Types.Expression.body>
    </Foundation.Data_Types.Expression>
  </Foundation.Core.Parameter.defaultValue>
  <Foundation.Core.Parameter.kind xmi.value = 'return' />
  <Foundation.Core.Parameter.type>
    <Foundation.Core.DataType xmi.idref = 'txmiid8' />
  </Foundation.Core.Parameter.type>
</Foundation.Core.Parameter>
<Foundation.Core.Parameter xmi.id = 'txmiid18.1' >
  <Foundation.Core.ModelElement.name>obj</Foundation.Core.ModelElement.name>
  <Foundation.Core.ModelElement.visibility xmi.value = 'private' />
  <Foundation.Core.Parameter.defaultValue>
    <Foundation.Data_Types.Expression>
      <Foundation.Data_Types.Expression.language></Foundation.Data_Types.Expression.language>
      <Foundation.Data_Types.Expression.body></Foundation.Data_Types.Expression.body>
    </Foundation.Data_Types.Expression>
  </Foundation.Core.Parameter.defaultValue>
  <Foundation.Core.Parameter.kind xmi.value = 'inout' />
  <Foundation.Core.Parameter.type>
    <Foundation.Core.DataType xmi.idref = 'txmiid14' />
  </Foundation.Core.Parameter.type>
</Foundation.Core.Parameter>
</Foundation.Core.BehavioralFeature.parameter>
</Foundation.Core.Operation>
<Foundation.Core.Operation xmi.id = 'txmiid19.0' >
  <Foundation.Core.ModelElement.name>setUpdatedClaim</Foundation.Core.ModelElement.name>
  <Foundation.Core.ModelElement.visibility xmi.value = 'public' />
  <Foundation.Core.Feature.ownerScope xmi.value = 'instance' />
  <Foundation.Core.BehavioralFeature.isQuery xmi.value = 'false' />
  <Foundation.Core.Operation.specification></Foundation.Core.Operation.specification>
  <Foundation.Core.Operation.isPolymorphic xmi.value = 'false' />
  <Foundation.Core.Operation.concurrency xmi.value = 'sequential' />
    <Foundation.Core.ModelElement.stereotype>
      <Foundation.Extension_Mechanisms.Stereotype xmi.idref = 'txmiid16.S' />
    </Foundation.Core.ModelElement.stereotype>
</Foundation.Core.ModelElement.taggedValue>
<Foundation.Extension_Mechanisms.TaggedValue>

<Foundation.Extension_Mechanisms.TaggedValue.tag>documentation</Foundation.Extension_Mechanisms.TaggedValue.tag>
  <Foundation.Extension_Mechanisms.TaggedValue.value>
</Foundation.Extension_Mechanisms.TaggedValue.value>
</Foundation.Extension_Mechanisms.TaggedValue>
</Foundation.Core.ModelElement.taggedValue>
<Foundation.Core.BehavioralFeature.parameter>
<Foundation.Core.Parameter xmi.id = 'txmiid19.Return' >
  <Foundation.Core.ModelElement.name>setUpdatedClaim.Return</Foundation.Core.ModelElement.name>
  <Foundation.Core.ModelElement.visibility xmi.value = 'private' />
  <Foundation.Core.Parameter.defaultValue>
    <Foundation.Data_Types.Expression>
      <Foundation.Data_Types.Expression.language></Foundation.Data_Types.Expression.language>
      <Foundation.Data_Types.Expression.body></Foundation.Data_Types.Expression.body>
    </Foundation.Data_Types.Expression>
  </Foundation.Core.Parameter.defaultValue>
  <Foundation.Core.Parameter.kind xmi.value = 'return' />
  <Foundation.Core.Parameter.type>
    <Foundation.Core.DataType xmi.idref = 'txmiid8' />
  </Foundation.Core.Parameter.type>
</Foundation.Core.Parameter>
<Foundation.Core.Parameter xmi.id = 'txmiid19.1' >
  <Foundation.Core.ModelElement.name>obj</Foundation.Core.ModelElement.name>
```

RADs and the UML

©2005 Role Modellers Ltd

www.rolemodellers.com

```
<Foundation.Core.ModelElement.visibility xmi.value = 'private' />
<Foundation.Core.Parameter.defaultValue>
  <Foundation.Data_Types.Expression>
    <Foundation.Data_Types.Expression.language></Foundation.Data_Types.Expression.language>
    <Foundation.Data_Types.Expression.body></Foundation.Data_Types.Expression.body>
  </Foundation.Data_Types.Expression>
</Foundation.Core.Parameter.defaultValue>
<Foundation.Core.Parameter.kind xmi.value = 'inout' />
<Foundation.Core.Parameter.type>
  <Foundation.Core.DataType xmi.idref = 'txmiid14' />
</Foundation.Core.Parameter.type>
</Foundation.Core.Parameter>
</Foundation.Core.BehavioralFeature.parameter>
</Foundation.Core.Operation>
<Foundation.Core.Operation xmi.id = 'txmiidla.O' >
  <Foundation.Core.ModelElement.name>giveClaimToClaimant</Foundation.Core.ModelElement.name>
  <Foundation.Core.ModelElement.visibility xmi.value = 'public' />
  <Foundation.Core.Feature.ownerScope xmi.value = 'instance' />
  <Foundation.Core.BehavioralFeature.isQuery xmi.value = 'false' />
  <Foundation.Core.Operation.specification></Foundation.Core.Operation.specification>
  <Foundation.Core.Operation.isPolymorphic xmi.value = 'false' />
  <Foundation.Core.Operation.concurrency xmi.value = 'sequential' />
  <Foundation.Core.ModelElement.stereotype>
    <Foundation.Extension_Mechanisms.Stereotype xmi.idref = 'txmiid1b.S' />
  </Foundation.Core.ModelElement.stereotype>
<Foundation.Core.ModelElement.taggedValue>
  <Foundation.Extension_Mechanisms.TaggedValue>

<Foundation.Extension_Mechanisms.TaggedValue.tag>documentation</Foundation.Extension_Mechanisms.TaggedValue.tag>
  <Foundation.Extension_Mechanisms.TaggedValue.value>
  /**
  </Foundation.Extension_Mechanisms.TaggedValue.value>
  </Foundation.Extension_Mechanisms.TaggedValue>
</Foundation.Core.ModelElement.taggedValue>
<Foundation.Core.BehavioralFeature.parameter>
  <Foundation.Core.Parameter xmi.id = 'txmiidla.Return' >

<Foundation.Core.ModelElement.name>giveClaimToClaimant.Return</Foundation.Core.ModelElement.name>
  <Foundation.Core.ModelElement.visibility xmi.value = 'private' />
  <Foundation.Core.Parameter.defaultValue>
    <Foundation.Data_Types.Expression>
      <Foundation.Data_Types.Expression.language></Foundation.Data_Types.Expression.language>
      <Foundation.Data_Types.Expression.body></Foundation.Data_Types.Expression.body>
    </Foundation.Data_Types.Expression>
  </Foundation.Core.Parameter.defaultValue>
  <Foundation.Core.Parameter.kind xmi.value = 'return' />
  <Foundation.Core.Parameter.type>
    <Foundation.Core.DataType xmi.idref = 'txmiid8' />
  </Foundation.Core.Parameter.type>
</Foundation.Core.Parameter>
</Foundation.Core.BehavioralFeature.parameter>
</Foundation.Core.Operation>
<Foundation.Core.Operation xmi.id = 'txmiidlc.O' >
  <Foundation.Core.ModelElement.name>giveClaimToUnderwriter</Foundation.Core.ModelElement.name>
  <Foundation.Core.ModelElement.visibility xmi.value = 'public' />
  <Foundation.Core.Feature.ownerScope xmi.value = 'instance' />
  <Foundation.Core.BehavioralFeature.isQuery xmi.value = 'false' />
  <Foundation.Core.Operation.specification></Foundation.Core.Operation.specification>
  <Foundation.Core.Operation.isPolymorphic xmi.value = 'false' />
  <Foundation.Core.Operation.concurrency xmi.value = 'sequential' />
  <Foundation.Core.ModelElement.stereotype>
    <Foundation.Extension_Mechanisms.Stereotype xmi.idref = 'txmiid1b.S' />
  </Foundation.Core.ModelElement.stereotype>
<Foundation.Core.ModelElement.taggedValue>
  <Foundation.Extension_Mechanisms.TaggedValue>

<Foundation.Extension_Mechanisms.TaggedValue.tag>documentation</Foundation.Extension_Mechanisms.TaggedValue.tag>
  <Foundation.Extension_Mechanisms.TaggedValue.value>
  </Foundation.Extension_Mechanisms.TaggedValue.value>
</Foundation.Extension_Mechanisms.TaggedValue>
</Foundation.Core.ModelElement.taggedValue>
<Foundation.Core.BehavioralFeature.parameter>
  <Foundation.Core.Parameter xmi.id = 'txmiidlc.Return' >

<Foundation.Core.ModelElement.name>giveClaimToUnderwriter.Return</Foundation.Core.ModelElement.name>
  <Foundation.Core.ModelElement.visibility xmi.value = 'private' />
  <Foundation.Core.Parameter.defaultValue>
    <Foundation.Data_Types.Expression>
      <Foundation.Data_Types.Expression.language></Foundation.Data_Types.Expression.language>
```

RADs and the UML

©2005 Role Modellers Ltd

www.rolemodellers.com

```
<Foundation.Data_Types.Expression.body></Foundation.Data_Types.Expression.body>
</Foundation.Data_Types.Expression>
</Foundation.Core.Parameter.defaultValue>
<Foundation.Core.Parameter.kind xmi.value = 'return' />
<Foundation.Core.Parameter.type>
  <Foundation.Core.DataType xmi.idref = 'txmiid8' />
</Foundation.Core.Parameter.type>
</Foundation.Core.Parameter>
</Foundation.Core.BehavioralFeature.parameter>
</Foundation.Core.Operation>
<Foundation.Core.Operation xmi.id = 'txmiid1d.O' >
  <Foundation.Core.ModelElement.name>maintainClaimDetails</Foundation.Core.ModelElement.name>
  <Foundation.Core.ModelElement.visibility xmi.value = 'protected' />
  <Foundation.Core.Feature.ownerScope xmi.value = 'instance' />
  <Foundation.Core.BehavioralFeature.isQuery xmi.value = 'false' />
  <Foundation.Core.Operation.specification></Foundation.Core.Operation.specification>
  <Foundation.Core.Operation.isPolymorphic xmi.value = 'false' />
  <Foundation.Core.Operation.concurrency xmi.value = 'sequential' />
  <Foundation.Core.ModelElement.stereotype>
    <Foundation.Extension_Mechanisms.Stereotype xmi.idref = 'txmiidle.S' />
  </Foundation.Core.ModelElement.stereotype>
</Foundation.Core.ModelElement.taggedValue>
<Foundation.Extension_Mechanisms.TaggedValue>
  <Foundation.Extension_Mechanisms.TaggedValue.tag>documentation</Foundation.Extension_Mechanisms.TaggedValue.tag>
  <Foundation.Extension_Mechanisms.TaggedValue.value>
  </Foundation.Extension_Mechanisms.TaggedValue.value>
</Foundation.Extension_Mechanisms.TaggedValue>
</Foundation.Core.ModelElement.taggedValue>
<Foundation.Core.BehavioralFeature.parameter>
  <Foundation.Core.Parameter xmi.id = 'txmiid1d.Return' >
    <Foundation.Core.ModelElement.name>maintainClaimDetails.Return</Foundation.Core.ModelElement.name>
    <Foundation.Core.ModelElement.visibility xmi.value = 'private' />
    <Foundation.Core.Parameter.defaultValue>
      <Foundation.Data_Types.Expression>
        <Foundation.Data_Types.Expression.language></Foundation.Data_Types.Expression.language>
        <Foundation.Data_Types.Expression.body></Foundation.Data_Types.Expression.body>
      </Foundation.Data_Types.Expression>
    </Foundation.Core.Parameter.defaultValue>
    <Foundation.Core.Parameter.kind xmi.value = 'return' />
    <Foundation.Core.Parameter.type>
      <Foundation.Core.DataType xmi.idref = 'txmiid8' />
    </Foundation.Core.Parameter.type>
  </Foundation.Core.Parameter>
</Foundation.Core.BehavioralFeature.parameter>
</Foundation.Core.Operation>
<Foundation.Core.Operation xmi.id = 'txmiid1f.O' >
  <Foundation.Core.ModelElement.name>createClaimForm</Foundation.Core.ModelElement.name>
  <Foundation.Core.ModelElement.visibility xmi.value = 'protected' />
  <Foundation.Core.Feature.ownerScope xmi.value = 'instance' />
  <Foundation.Core.BehavioralFeature.isQuery xmi.value = 'false' />
  <Foundation.Core.Operation.specification></Foundation.Core.Operation.specification>
  <Foundation.Core.Operation.isPolymorphic xmi.value = 'false' />
  <Foundation.Core.Operation.concurrency xmi.value = 'sequential' />
  <Foundation.Core.ModelElement.stereotype>
    <Foundation.Extension_Mechanisms.Stereotype xmi.idref = 'txmiid20.S' />
  </Foundation.Core.ModelElement.stereotype>
</Foundation.Core.ModelElement.taggedValue>
<Foundation.Extension_Mechanisms.TaggedValue>
  <Foundation.Extension_Mechanisms.TaggedValue.tag>documentation</Foundation.Extension_Mechanisms.TaggedValue.tag>
  <Foundation.Extension_Mechanisms.TaggedValue.value>
  </Foundation.Extension_Mechanisms.TaggedValue.value>
</Foundation.Extension_Mechanisms.TaggedValue>
</Foundation.Core.ModelElement.taggedValue>
<Foundation.Core.BehavioralFeature.parameter>
  <Foundation.Core.Parameter xmi.id = 'txmiid1f.Return' >
    <Foundation.Core.ModelElement.name>createClaimForm.Return</Foundation.Core.ModelElement.name>
    <Foundation.Core.ModelElement.visibility xmi.value = 'private' />
    <Foundation.Core.Parameter.defaultValue>
      <Foundation.Data_Types.Expression>
        <Foundation.Data_Types.Expression.language></Foundation.Data_Types.Expression.language>
        <Foundation.Data_Types.Expression.body></Foundation.Data_Types.Expression.body>
      </Foundation.Data_Types.Expression>
    </Foundation.Core.Parameter.defaultValue>
    <Foundation.Core.Parameter.kind xmi.value = 'return' />
    <Foundation.Core.Parameter.type>
      <Foundation.Core.DataType xmi.idref = 'txmiid8' />
    </Foundation.Core.Parameter.type>
  </Foundation.Core.Parameter>
</Foundation.Core.BehavioralFeature.parameter>
</Foundation.Core.Operation>
```

```

</Foundation.Core.Parameter>
<Foundation.Core.Parameter xmi.id = 'txmiid1f.1' >
<Foundation.Core.ModelElement.name>policyNumber</Foundation.Core.ModelElement.name>
<Foundation.Core.ModelElement.visibility xmi.value = 'private' />
<Foundation.Core.Parameter.defaultValue>
<Foundation.Data_Types.Expression>
<Foundation.Data_Types.Expression.language></Foundation.Data_Types.Expression.language>
<Foundation.Data_Types.Expression.body></Foundation.Data_Types.Expression.body>
</Foundation.Data_Types.Expression>
</Foundation.Core.Parameter.defaultValue>
<Foundation.Core.Parameter.kind xmi.value = 'inout' />
<Foundation.Core.Parameter.type>
<Foundation.Core.DataType xmi.idref = 'txmiid21' />
</Foundation.Core.Parameter.type>
</Foundation.Core.Parameter>
</Foundation.Core.BehavioralFeature.parameter>
</Foundation.Core.Operation>
<Foundation.Core.Operation xmi.id = 'txmiid22.0' >
<Foundation.Core.ModelElement.name>reserveFunds</Foundation.Core.ModelElement.name>
<Foundation.Core.ModelElement.visibility xmi.value = 'protected' />
<Foundation.Core.Feature.ownerScope xmi.value = 'instance' />
<Foundation.Core.BehavioralFeature.isQuery xmi.value = 'false' />
<Foundation.Core.Operation.specification></Foundation.Core.Operation.specification>
<Foundation.Core.Operation.isPolymorphic xmi.value = 'false' />
<Foundation.Core.Operation.concurrency xmi.value = 'sequential' />
<Foundation.Core.ModelElement.stereotype>
<Foundation.Extension_Mechanisms.Stereotype xmi.idref = 'txmiid20.S' />
</Foundation.Core.ModelElement.stereotype>
<Foundation.Core.ModelElement.taggedValue>
<Foundation.Extension_Mechanisms.TaggedValue>

<Foundation.Extension_Mechanisms.TaggedValue.tag>documentation</Foundation.Extension_Mechanisms.TaggedValue.tag>
<Foundation.Extension_Mechanisms.TaggedValue.value>
</Foundation.Extension_Mechanisms.TaggedValue.value>
</Foundation.Extension_Mechanisms.TaggedValue>
</Foundation.Core.ModelElement.taggedValue>
<Foundation.Core.BehavioralFeature.parameter>
<Foundation.Core.Parameter xmi.id = 'txmiid22.Return' >
<Foundation.Core.ModelElement.name>reserveFunds.Return</Foundation.Core.ModelElement.name>
<Foundation.Core.ModelElement.visibility xmi.value = 'private' />
<Foundation.Core.Parameter.defaultValue>
<Foundation.Data_Types.Expression>
<Foundation.Data_Types.Expression.language></Foundation.Data_Types.Expression.language>
<Foundation.Data_Types.Expression.body></Foundation.Data_Types.Expression.body>
</Foundation.Data_Types.Expression>
</Foundation.Core.Parameter.defaultValue>
<Foundation.Core.Parameter.kind xmi.value = 'return' />
<Foundation.Core.Parameter.type>
<Foundation.Core.DataType xmi.idref = 'txmiid8' />
</Foundation.Core.Parameter.type>
</Foundation.Core.Parameter>
<Foundation.Core.Parameter xmi.id = 'txmiid22.1' >
<Foundation.Core.ModelElement.name>amount</Foundation.Core.ModelElement.name>
<Foundation.Core.ModelElement.visibility xmi.value = 'private' />
<Foundation.Core.Parameter.defaultValue>
<Foundation.Data_Types.Expression>
<Foundation.Data_Types.Expression.language></Foundation.Data_Types.Expression.language>
<Foundation.Data_Types.Expression.body></Foundation.Data_Types.Expression.body>
</Foundation.Data_Types.Expression>
</Foundation.Core.Parameter.defaultValue>
<Foundation.Core.Parameter.kind xmi.value = 'inout' />
<Foundation.Core.Parameter.type>
<Foundation.Core.DataType xmi.idref = 'txmiid21' />
</Foundation.Core.Parameter.type>
</Foundation.Core.Parameter>
</Foundation.Core.BehavioralFeature.parameter>
</Foundation.Core.Operation>
<Foundation.Core.Operation xmi.id = 'txmiid23.0' >
<Foundation.Core.ModelElement.name>claimFormNotCreated</Foundation.Core.ModelElement.name>
<Foundation.Core.ModelElement.visibility xmi.value = 'protected' />
<Foundation.Core.Feature.ownerScope xmi.value = 'instance' />
<Foundation.Core.BehavioralFeature.isQuery xmi.value = 'false' />
<Foundation.Core.Operation.specification></Foundation.Core.Operation.specification>
<Foundation.Core.Operation.isPolymorphic xmi.value = 'false' />
<Foundation.Core.Operation.concurrency xmi.value = 'sequential' />
<Foundation.Core.ModelElement.stereotype>
<Foundation.Extension_Mechanisms.Stereotype xmi.idref = 'txmiid24.S' />
</Foundation.Core.ModelElement.stereotype>
<Foundation.Core.ModelElement.taggedValue>
<Foundation.Extension_Mechanisms.TaggedValue>

```

```

<Foundation.Extension_Mechanisms.TaggedValue.tag>documentation</Foundation.Extension_Mechanisms.TaggedValue.tag>
  <Foundation.Extension_Mechanisms.TaggedValue.value>
  </Foundation.Extension_Mechanisms.TaggedValue.value>
</Foundation.Extension_Mechanisms.TaggedValue>
</Foundation.Core.ModelElement.taggedValue>
  <Foundation.Core.BehavioralFeature.parameter>
  <Foundation.Core.Parameter xmi.id = 'txmiid23.Return' >

<Foundation.Core.ModelElement.name>claimFormNotCreated.Return</Foundation.Core.ModelElement.name>
  <Foundation.Core.ModelElement.visibility xmi.value = 'private' />
  <Foundation.Core.Parameter.defaultValue>
  <Foundation.Data_Types.Expression>
  <Foundation.Data_Types.Expression.language></Foundation.Data_Types.Expression.language>
  <Foundation.Data_Types.Expression.body></Foundation.Data_Types.Expression.body>
  </Foundation.Data_Types.Expression>
  <Foundation.Core.Parameter.defaultValue>
  <Foundation.Core.Parameter.kind xmi.value = 'return' />
  <Foundation.Core.Parameter.type>
  <Foundation.Core.DataType xmi.idref = 'txmiid25' />
  </Foundation.Core.Parameter.type>
</Foundation.Core.Parameter>
</Foundation.Core.BehavioralFeature.parameter>
</Foundation.Core.Operation>
<Foundation.Core.Operation xmi.id = 'txmiid26.0' >
  <Foundation.Core.ModelElement.name>claimFormCreated</Foundation.Core.ModelElement.name>
  <Foundation.Core.ModelElement.visibility xmi.value = 'protected' />
  <Foundation.Core.Feature.ownerScope xmi.value = 'instance' />
  <Foundation.Core.BehavioralFeature.isQuery xmi.value = 'false' />
  <Foundation.Core.Operation.specification></Foundation.Core.Operation.specification>
  <Foundation.Core.Operation.isPolymorphic xmi.value = 'false' />
  <Foundation.Core.Operation.concurrency xmi.value = 'sequential' />
  <Foundation.Core.ModelElement.stereotype>
  <Foundation.Extension_Mechanisms.Stereotype xmi.idref = 'txmiid24.S' />
  </Foundation.Core.ModelElement.stereotype>
</Foundation.Core.ModelElement.taggedValue>
  <Foundation.Extension_Mechanisms.TaggedValue>

<Foundation.Extension_Mechanisms.TaggedValue.tag>documentation</Foundation.Extension_Mechanisms.TaggedValue.tag>
  <Foundation.Extension_Mechanisms.TaggedValue.value>
  </Foundation.Extension_Mechanisms.TaggedValue.value>
</Foundation.Extension_Mechanisms.TaggedValue>
</Foundation.Core.ModelElement.taggedValue>
  <Foundation.Core.BehavioralFeature.parameter>
  <Foundation.Core.Parameter xmi.id = 'txmiid26.Return' >

<Foundation.Core.ModelElement.name>claimFormCreated.Return</Foundation.Core.ModelElement.name>
  <Foundation.Core.ModelElement.visibility xmi.value = 'private' />
  <Foundation.Core.Parameter.defaultValue>
  <Foundation.Data_Types.Expression>
  <Foundation.Data_Types.Expression.language></Foundation.Data_Types.Expression.language>
  <Foundation.Data_Types.Expression.body></Foundation.Data_Types.Expression.body>
  </Foundation.Data_Types.Expression>
  <Foundation.Core.Parameter.defaultValue>
  <Foundation.Core.Parameter.kind xmi.value = 'return' />
  <Foundation.Core.Parameter.type>
  <Foundation.Core.DataType xmi.idref = 'txmiid25' />
  </Foundation.Core.Parameter.type>
</Foundation.Core.Parameter>
</Foundation.Core.BehavioralFeature.parameter>
</Foundation.Core.Operation>
<Foundation.Core.Operation xmi.id = 'txmiid27.0' >
  <Foundation.Core.ModelElement.name>claimFormIsComplete</Foundation.Core.ModelElement.name>
  <Foundation.Core.ModelElement.visibility xmi.value = 'protected' />
  <Foundation.Core.Feature.ownerScope xmi.value = 'instance' />
  <Foundation.Core.BehavioralFeature.isQuery xmi.value = 'false' />
  <Foundation.Core.Operation.specification></Foundation.Core.Operation.specification>
  <Foundation.Core.Operation.isPolymorphic xmi.value = 'false' />
  <Foundation.Core.Operation.concurrency xmi.value = 'sequential' />
  <Foundation.Core.ModelElement.stereotype>
  <Foundation.Extension_Mechanisms.Stereotype xmi.idref = 'txmiid24.S' />
  </Foundation.Core.ModelElement.stereotype>
</Foundation.Core.ModelElement.taggedValue>
  <Foundation.Extension_Mechanisms.TaggedValue>

<Foundation.Extension_Mechanisms.TaggedValue.tag>documentation</Foundation.Extension_Mechanisms.TaggedValue.tag>
  <Foundation.Extension_Mechanisms.TaggedValue.value>
  </Foundation.Extension_Mechanisms.TaggedValue.value>
</Foundation.Extension_Mechanisms.TaggedValue>

```

RADs and the UML

©2005 Role Modellers Ltd

www.rolemodellers.com

```
</Foundation.Core.ModelElement.taggedValue>
  <Foundation.Core.BehavioralFeature.parameter>
    <Foundation.Core.Parameter xmi.id = 'txmiid27.Return' >
</Foundation.Core.ModelElement.name>claimFormIsComplete.Return</Foundation.Core.ModelElement.name>
  <Foundation.Core.ModelElement.visibility xmi.value = 'private' />
  <Foundation.Core.Parameter.defaultValue>
    <Foundation.Data.Types.Expression>
      <Foundation.Data.Types.Expression.language></Foundation.Data.Types.Expression.language>
      <Foundation.Data.Types.Expression.body></Foundation.Data.Types.Expression.body>
    </Foundation.Data.Types.Expression>
  </Foundation.Core.Parameter.defaultValue>
  <Foundation.Core.Parameter.kind xmi.value = 'return' />
  <Foundation.Core.Parameter.type>
    <Foundation.Core.DataType xmi.idref = 'txmiid25' />
  </Foundation.Core.Parameter.type>
</Foundation.Core.Parameter>
</Foundation.Core.BehavioralFeature.parameter>
</Foundation.Core.Operation>
</Foundation.Core.Classifier.feature>
</Foundation.Core.Class>
<Foundation.Core.Association xmi.id = 'txmiidc.ASS' >
<Foundation.Core.ModelElement.name></Foundation.Core.ModelElement.name>
<Foundation.Core.ModelElement.visibility xmi.value = 'private' />
<Foundation.Core.GeneralizableElement.isRoot xmi.value = 'false' />
<Foundation.Core.GeneralizableElement.isLeaf xmi.value = 'false' />
<Foundation.Core.GeneralizableElement.isAbstract xmi.value = 'false' />
<Foundation.Core.Association.connection>
  <Foundation.Core.AssociationEnd xmi.id = 'txmiidc.CE' >
    <Foundation.Core.ModelElement.name></Foundation.Core.ModelElement.name>
    <Foundation.Core.ModelElement.visibility xmi.value = 'public' />
    <Foundation.Core.AssociationEnd.isNavigable xmi.value = 'false' />
    <Foundation.Core.AssociationEnd.isOrdered xmi.value = 'false' />
    <Foundation.Core.AssociationEnd.aggregation xmi.value = 'none' />
    <Foundation.Core.AssociationEnd.multiplicity></Foundation.Core.AssociationEnd.multiplicity>
    <Foundation.Core.AssociationEnd.changeable xmi.value = 'none' />
    <Foundation.Core.AssociationEnd.targetScope xmi.value = 'instance' />
    <Foundation.Core.AssociationEnd.type>
      <Foundation.Core.Class xmi.idref = 'txmiida' />
    </Foundation.Core.AssociationEnd.type>
  </Foundation.Core.AssociationEnd>
  <Foundation.Core.AssociationEnd xmi.id = 'txmiidc.SE' >
    <Foundation.Core.ModelElement.name></Foundation.Core.ModelElement.name>
    <Foundation.Core.ModelElement.visibility xmi.value = 'public' />
    <Foundation.Core.AssociationEnd.isNavigable xmi.value = 'false' />
    <Foundation.Core.AssociationEnd.isOrdered xmi.value = 'false' />
    <Foundation.Core.AssociationEnd.aggregation xmi.value = 'none' />
    <Foundation.Core.AssociationEnd.multiplicity></Foundation.Core.AssociationEnd.multiplicity>
    <Foundation.Core.AssociationEnd.changeable xmi.value = 'none' />
    <Foundation.Core.AssociationEnd.targetScope xmi.value = 'instance' />
    <Foundation.Core.AssociationEnd.type>
      <Foundation.Core.Class xmi.idref = 'txmiid28' />
    </Foundation.Core.AssociationEnd.type>
  </Foundation.Core.AssociationEnd>
</Foundation.Core.Association.connection>
</Foundation.Core.Association>
<Foundation.Core.Association xmi.id = 'txmiidd.ASS' >
<Foundation.Core.ModelElement.name></Foundation.Core.ModelElement.name>
<Foundation.Core.ModelElement.visibility xmi.value = 'private' />
<Foundation.Core.GeneralizableElement.isRoot xmi.value = 'false' />
<Foundation.Core.GeneralizableElement.isLeaf xmi.value = 'false' />
<Foundation.Core.GeneralizableElement.isAbstract xmi.value = 'false' />
<Foundation.Core.Association.connection>
  <Foundation.Core.AssociationEnd xmi.id = 'txmiidd.CE' >
    <Foundation.Core.ModelElement.name></Foundation.Core.ModelElement.name>
    <Foundation.Core.ModelElement.visibility xmi.value = 'public' />
    <Foundation.Core.AssociationEnd.isNavigable xmi.value = 'false' />
    <Foundation.Core.AssociationEnd.isOrdered xmi.value = 'false' />
    <Foundation.Core.AssociationEnd.aggregation xmi.value = 'none' />
    <Foundation.Core.AssociationEnd.multiplicity></Foundation.Core.AssociationEnd.multiplicity>
    <Foundation.Core.AssociationEnd.changeable xmi.value = 'none' />
    <Foundation.Core.AssociationEnd.targetScope xmi.value = 'instance' />
    <Foundation.Core.AssociationEnd.type>
      <Foundation.Core.Class xmi.idref = 'txmiida' />
    </Foundation.Core.AssociationEnd.type>
  </Foundation.Core.AssociationEnd>
  <Foundation.Core.AssociationEnd xmi.id = 'txmiidd.SE' >
    <Foundation.Core.ModelElement.name></Foundation.Core.ModelElement.name>
    <Foundation.Core.ModelElement.visibility xmi.value = 'public' />
    <Foundation.Core.AssociationEnd.isNavigable xmi.value = 'false' />
    <Foundation.Core.AssociationEnd.isOrdered xmi.value = 'false' />
    <Foundation.Core.AssociationEnd.aggregation xmi.value = 'none' />
```

RADs and the UML

©2005 Role Modellers Ltd

www.rolemodellers.com

```
<Foundation.Core.AssociationEnd.multiplicity></Foundation.Core.AssociationEnd.multiplicity>
<Foundation.Core.AssociationEnd.changeable xmi.value = 'none' />
<Foundation.Core.AssociationEnd.targetScope xmi.value = 'instance' />
<Foundation.Core.AssociationEnd.type>
  <Foundation.Core.Class xmi.idref = 'txmiid29' />
</Foundation.Core.AssociationEnd.type>
</Foundation.Core.AssociationEnd>
</Foundation.Core.Association.connection>
</Foundation.Core.Association>
<Foundation.Core.Association xmi.id = 'txmiide.ASS' >
<Foundation.Core.ModelElement.name></Foundation.Core.ModelElement.name>
<Foundation.Core.ModelElement.visibility xmi.value = 'private' />
<Foundation.Core.GeneralizableElement.isRoot xmi.value = 'false' />
<Foundation.Core.GeneralizableElement.isLeaf xmi.value = 'false' />
<Foundation.Core.GeneralizableElement.isAbstract xmi.value = 'false' />
<Foundation.Core.Association.connection>
  <Foundation.Core.AssociationEnd xmi.id = 'txmiide.CE' >
    <Foundation.Core.ModelElement.name></Foundation.Core.ModelElement.name>
    <Foundation.Core.ModelElement.visibility xmi.value = 'public' />
    <Foundation.Core.AssociationEnd.isNavigable xmi.value = 'false' />
    <Foundation.Core.AssociationEnd.isOrdered xmi.value = 'false' />
    <Foundation.Core.AssociationEnd.aggregation xmi.value = 'none' />
    <Foundation.Core.AssociationEnd.multiplicity></Foundation.Core.AssociationEnd.multiplicity>
    <Foundation.Core.AssociationEnd.changeable xmi.value = 'none' />
    <Foundation.Core.AssociationEnd.targetScope xmi.value = 'instance' />
    <Foundation.Core.AssociationEnd.type>
      <Foundation.Core.Class xmi.idref = 'txmiida' />
    </Foundation.Core.AssociationEnd.type>
  </Foundation.Core.AssociationEnd>
  <Foundation.Core.AssociationEnd xmi.id = 'txmiide.SE' >
    <Foundation.Core.ModelElement.name></Foundation.Core.ModelElement.name>
    <Foundation.Core.ModelElement.visibility xmi.value = 'public' />
    <Foundation.Core.AssociationEnd.isNavigable xmi.value = 'false' />
    <Foundation.Core.AssociationEnd.isOrdered xmi.value = 'false' />
    <Foundation.Core.AssociationEnd.aggregation xmi.value = 'none' />
    <Foundation.Core.AssociationEnd.multiplicity></Foundation.Core.AssociationEnd.multiplicity>
    <Foundation.Core.AssociationEnd.changeable xmi.value = 'none' />
    <Foundation.Core.AssociationEnd.targetScope xmi.value = 'instance' />
    <Foundation.Core.AssociationEnd.type>
      <Foundation.Core.Class xmi.idref = 'txmiid2a' />
    </Foundation.Core.AssociationEnd.type>
  </Foundation.Core.AssociationEnd>
</Foundation.Core.Association.connection>
</Foundation.Core.Association>
<Foundation.Core.Generalization xmi.id = 'ClaimCaseWorkerRole.G' >
<Foundation.Core.ModelElement.name></Foundation.Core.ModelElement.name>
<Foundation.Core.ModelElement.visibility xmi.value = 'public' />
<Foundation.Core.Generalization.discriminator></Foundation.Core.Generalization.discriminator>
<Foundation.Core.Generalization.subtype>
  <Foundation.Core.Class xmi.idref = 'txmiida' />
</Foundation.Core.Generalization.subtype>
<Foundation.Core.Generalization.supertype>
  <Foundation.Core.Class xmi.idref = 'txmiid2b' />
</Foundation.Core.Generalization.supertype>
</Foundation.Core.Generalization>
<Foundation.Core.Class xmi.id = 'txmiid2a' >
<Foundation.Core.ModelElement.name>ClaimLOB</Foundation.Core.ModelElement.name>
<Foundation.Core.ModelElement.visibility xmi.value = 'public' />
<Foundation.Core.GeneralizableElement.isRoot xmi.value = 'false' />
<Foundation.Core.GeneralizableElement.isLeaf xmi.value = 'false' />
<Foundation.Core.GeneralizableElement.isAbstract xmi.value = 'false' />
<Foundation.Core.Class.isActive xmi.value = 'false' />
  <Foundation.Core.ModelElement.stereotype>
    <Foundation.Extension_Mechanisms.Stereotype xmi.idref = 'txmiid2c.S' />
  </Foundation.Core.ModelElement.stereotype>
<Foundation.Core.ModelElement.namespace>
  <Model_Management.Package xmi.idref = 'txmiid1' />
</Foundation.Core.ModelElement.namespace>
<Foundation.Core.ModelElement.taggedValue>
  <Foundation.Extension_Mechanisms.TaggedValue>
    <Foundation.Extension_Mechanisms.TaggedValue.tag>documentation</Foundation.Extension_Mechanisms.TaggedValue.tag>
    <Foundation.Extension_Mechanisms.TaggedValue.value>
      </Foundation.Extension_Mechanisms.TaggedValue.value>
    </Foundation.Extension_Mechanisms.TaggedValue>
  </Foundation.Core.ModelElement.taggedValue>
<Foundation.Core.Classifier.feature>
  <Foundation.Core.Operation xmi.id = 'txmiid2d.O' >
    <Foundation.Core.ModelElement.name>isComplete</Foundation.Core.ModelElement.name>
    <Foundation.Core.ModelElement.visibility xmi.value = 'protected' />
    <Foundation.Core.Feature.ownerScope xmi.value = 'instance' />
  </Foundation.Core.Operation>
</Foundation.Core.Classifier.feature>
</Foundation.Core.Classifier>
</Foundation.Core.Class>
```

RADs and the UML

©2005 Role Modellers Ltd

www.rolemodellers.com

```
<Foundation.Core.BehavioralFeature.isQuery xmi.value = 'false' />
<Foundation.Core.Operation.specification></Foundation.Core.Operation.specification>
<Foundation.Core.Operation.isPolymorphic xmi.value = 'false' />
<Foundation.Core.Operation.concurrency xmi.value = 'sequential' />
<Foundation.Core.ModelElement.taggedValue>
  <Foundation.Extension_Mechanisms.TaggedValue>

<Foundation.Extension_Mechanisms.TaggedValue.tag>documentation</Foundation.Extension_Mechanisms.TaggedValue.tag>
  <Foundation.Extension_Mechanisms.TaggedValue.value>
    </Foundation.Extension_Mechanisms.TaggedValue.value>
  </Foundation.Extension_Mechanisms.TaggedValue>
</Foundation.Core.ModelElement.taggedValue>
<Foundation.Core.BehavioralFeature.parameter>
  <Foundation.Core.Parameter xmi.id = 'txmiid2d.Return' >
    <Foundation.Core.ModelElement.name>isComplete.Return</Foundation.Core.ModelElement.name>
    <Foundation.Core.ModelElement.visibility xmi.value = 'private' />
    <Foundation.Core.Parameter.defaultValue>
      <Foundation.Data_Types.Expression>
        <Foundation.Data_Types.Expression.language></Foundation.Data_Types.Expression.language>
        <Foundation.Data_Types.Expression.body></Foundation.Data_Types.Expression.body>
      </Foundation.Data_Types.Expression>
    </Foundation.Core.Parameter.defaultValue>
    <Foundation.Core.Parameter.kind xmi.value = 'return' />
    <Foundation.Core.Parameter.type>
      <Foundation.Core.DataType xmi.idref = 'txmiid25' />
    </Foundation.Core.Parameter.type>
  </Foundation.Core.Parameter>
</Foundation.Core.BehavioralFeature.parameter>
</Foundation.Core.Operation>
<Foundation.Core.Operation xmi.id = 'txmiid2e.0' >
  <Foundation.Core.ModelElement.name>decisionGiven</Foundation.Core.ModelElement.name>
  <Foundation.Core.ModelElement.visibility xmi.value = 'protected' />
  <Foundation.Core.Feature.ownerScope xmi.value = 'instance' />
  <Foundation.Core.BehavioralFeature.isQuery xmi.value = 'false' />
  <Foundation.Core.Operation.specification></Foundation.Core.Operation.specification>
  <Foundation.Core.Operation.isPolymorphic xmi.value = 'false' />
  <Foundation.Core.Operation.concurrency xmi.value = 'sequential' />
<Foundation.Core.ModelElement.taggedValue>
  <Foundation.Extension_Mechanisms.TaggedValue>

<Foundation.Extension_Mechanisms.TaggedValue.tag>documentation</Foundation.Extension_Mechanisms.TaggedValue.tag>
  <Foundation.Extension_Mechanisms.TaggedValue.value>
    </Foundation.Extension_Mechanisms.TaggedValue.value>
  </Foundation.Extension_Mechanisms.TaggedValue>
</Foundation.Core.ModelElement.taggedValue>
<Foundation.Core.BehavioralFeature.parameter>
  <Foundation.Core.Parameter xmi.id = 'txmiid2e.Return' >
    <Foundation.Core.ModelElement.name>decisionGiven.Return</Foundation.Core.ModelElement.name>
    <Foundation.Core.ModelElement.visibility xmi.value = 'private' />
    <Foundation.Core.Parameter.defaultValue>
      <Foundation.Data_Types.Expression>
        <Foundation.Data_Types.Expression.language></Foundation.Data_Types.Expression.language>
        <Foundation.Data_Types.Expression.body></Foundation.Data_Types.Expression.body>
      </Foundation.Data_Types.Expression>
    </Foundation.Core.Parameter.defaultValue>
    <Foundation.Core.Parameter.kind xmi.value = 'return' />
    <Foundation.Core.Parameter.type>
      <Foundation.Core.DataType xmi.idref = 'txmiid25' />
    </Foundation.Core.Parameter.type>
  </Foundation.Core.Parameter>
</Foundation.Core.BehavioralFeature.parameter>
</Foundation.Core.Operation>
</Foundation.Core.Classifier.feature>
</Foundation.Core.Class>
<Foundation.Core.Class xmi.id = 'txmiid28' >
  <Foundation.Core.ModelElement.name>Claimant</Foundation.Core.ModelElement.name>
  <Foundation.Core.ModelElement.visibility xmi.value = 'public' />
  <Foundation.Core.GeneralizableElement.isRoot xmi.value = 'false' />
  <Foundation.Core.GeneralizableElement.isLeaf xmi.value = 'false' />
  <Foundation.Core.GeneralizableElement.isAbstract xmi.value = 'false' />
  <Foundation.Core.Class.isActive xmi.value = 'false' />
  <Foundation.Core.ModelElement.stereotype>
    <Foundation.Extension_Mechanisms.Stereotype xmi.idref = 'txmiidb.S' />
  </Foundation.Core.ModelElement.stereotype>
  <Foundation.Core.ModelElement.namespace>
    <Model_Management.Package xmi.idref = 'txmiid1' />
  </Foundation.Core.ModelElement.namespace>
  <Foundation.Core.GeneralizableElement.generalization>
    <Foundation.Core.Generalization xmi.idref = 'ClaimantRole.G' />
  </Foundation.Core.GeneralizableElement.generalization>
```

RADs and the UML

©2005 Role Modellers Ltd

www.rolemodellers.com

```
<Foundation.Core.Classifier.associationEnd>
  <Foundation.Core.AssociationEnd xmi.idref = 'txmiid2f.CE' />
  <Foundation.Core.AssociationEnd xmi.idref = 'txmiid30.CE' />
</Foundation.Core.Classifier.associationEnd>
</Foundation.Core.ModelElement.taggedValue>
  <Foundation.Extension_Mechanisms.TaggedValue>

<Foundation.Extension_Mechanisms.TaggedValue.tag>documentation</Foundation.Extension_Mechanisms.TaggedValue.tag>
  <Foundation.Extension_Mechanisms.TaggedValue.value>
  </Foundation.Extension_Mechanisms.TaggedValue.value>
</Foundation.Extension_Mechanisms.TaggedValue>
</Foundation.Core.ModelElement.taggedValue>
<Foundation.Core.Classifier.feature>
  <Foundation.Core.Attribute xmi.id = 'txmiid31.a' >
  <Foundation.Core.ModelElement.name>caseWorker</Foundation.Core.ModelElement.name>
  <Foundation.Core.ModelElement.visibility xmi.value = 'private' />
  <Foundation.Core.Feature.ownerScope xmi.value = 'classifier' />

<Foundation.Core.StructuralFeature.multiplicity>1..1</Foundation.Core.StructuralFeature.multiplicity>
  <Foundation.Core.StructuralFeature.changeable xmi.value = 'none' />
  <Foundation.Core.StructuralFeature.targetScope xmi.value = 'instance' />
  <Foundation.Core.Attribute.initialValue>
  <Foundation.Data_Types.Expression>
  <Foundation.Data_Types.Expression.language></Foundation.Data_Types.Expression.language>
  <Foundation.Data_Types.Expression.body></Foundation.Data_Types.Expression.body>
  </Foundation.Data_Types.Expression>
  </Foundation.Core.Attribute.initialValue>
  <Foundation.Core.StructuralFeature.type>
  <Foundation.Core.DataType xmi.idref = 'txmiid32' />
  </Foundation.Core.StructuralFeature.type>
</Foundation.Core.ModelElement.taggedValue>
  <Foundation.Extension_Mechanisms.TaggedValue>

<Foundation.Extension_Mechanisms.TaggedValue.tag>documentation</Foundation.Extension_Mechanisms.TaggedValue.tag>
  <Foundation.Extension_Mechanisms.TaggedValue.value>
  </Foundation.Extension_Mechanisms.TaggedValue.value>
</Foundation.Extension_Mechanisms.TaggedValue>
</Foundation.Core.ModelElement.taggedValue>
</Foundation.Core.Attribute>
  <Foundation.Core.Attribute xmi.id = 'txmiid33.a' >
  <Foundation.Core.ModelElement.name>claim</Foundation.Core.ModelElement.name>
  <Foundation.Core.ModelElement.visibility xmi.value = 'private' />
  <Foundation.Core.Feature.ownerScope xmi.value = 'classifier' />

<Foundation.Core.StructuralFeature.multiplicity>1..1</Foundation.Core.StructuralFeature.multiplicity>
  <Foundation.Core.StructuralFeature.changeable xmi.value = 'none' />
  <Foundation.Core.StructuralFeature.targetScope xmi.value = 'instance' />
  <Foundation.Core.Attribute.initialValue>
  <Foundation.Data_Types.Expression>
  <Foundation.Data_Types.Expression.language></Foundation.Data_Types.Expression.language>
  <Foundation.Data_Types.Expression.body></Foundation.Data_Types.Expression.body>
  </Foundation.Data_Types.Expression>
  </Foundation.Core.Attribute.initialValue>
  <Foundation.Core.StructuralFeature.type>
  <Foundation.Core.DataType xmi.idref = 'txmiid14' />
  </Foundation.Core.StructuralFeature.type>
</Foundation.Core.ModelElement.taggedValue>
  <Foundation.Extension_Mechanisms.TaggedValue>

<Foundation.Extension_Mechanisms.TaggedValue.tag>documentation</Foundation.Extension_Mechanisms.TaggedValue.tag>
  <Foundation.Extension_Mechanisms.TaggedValue.value>
  </Foundation.Extension_Mechanisms.TaggedValue.value>
</Foundation.Extension_Mechanisms.TaggedValue>
</Foundation.Core.ModelElement.taggedValue>
</Foundation.Core.Attribute>
  <Foundation.Core.Operation xmi.id = 'txmiid34.O' >
  <Foundation.Core.ModelElement.name>setCaseWorker</Foundation.Core.ModelElement.name>
  <Foundation.Core.ModelElement.visibility xmi.value = 'public' />
  <Foundation.Core.Feature.ownerScope xmi.value = 'instance' />
  <Foundation.Core.BehavioralFeature.isQuery xmi.value = 'false' />
  <Foundation.Core.Operation.specification></Foundation.Core.Operation.specification>
  <Foundation.Core.Operation.isPolymorphic xmi.value = 'false' />
  <Foundation.Core.Operation.concurrency xmi.value = 'sequential' />
  <Foundation.Core.ModelElement.stereotype>
  <Foundation.Extension_Mechanisms.Stereotype xmi.idref = 'txmiid16.S' />
  </Foundation.Core.ModelElement.stereotype>
</Foundation.Core.ModelElement.taggedValue>
```

RADs and the UML

©2005 Role Modellers Ltd

www.rolemodellers.com

```
<Foundation.Extension_Mechanisms.TaggedValue>
<Foundation.Extension_Mechanisms.TaggedValue.tag>documentation</Foundation.Extension_Mechanisms.TaggedValue.tag>
<Foundation.Extension_Mechanisms.TaggedValue.value>
</Foundation.Extension_Mechanisms.TaggedValue.value>
</Foundation.Extension_Mechanisms.TaggedValue>
</Foundation.Core.ModelElement.taggedValue>
<Foundation.Core.BehavioralFeature.parameter>
<Foundation.Core.Parameter xmi.id = 'txmiid34.Return' >
<Foundation.Core.ModelElement.name>setCaseWorker.Return</Foundation.Core.ModelElement.name>
<Foundation.Core.ModelElement.visibility xmi.value = 'private' />
<Foundation.Core.Parameter.defaultValue>
<Foundation.Data_Types.Expression>
<Foundation.Data_Types.Expression.language></Foundation.Data_Types.Expression.language>
<Foundation.Data_Types.Expression.body></Foundation.Data_Types.Expression.body>
</Foundation.Data_Types.Expression>
</Foundation.Core.Parameter.defaultValue>
<Foundation.Core.Parameter.kind xmi.value = 'return' />
<Foundation.Core.Parameter.type>
<Foundation.Core.DataType xmi.idref = 'txmiid8' />
</Foundation.Core.Parameter.type>
</Foundation.Core.Parameter>
<Foundation.Core.Parameter xmi.id = 'txmiid34.1' >
<Foundation.Core.ModelElement.name>obj</Foundation.Core.ModelElement.name>
<Foundation.Core.ModelElement.visibility xmi.value = 'private' />
<Foundation.Core.Parameter.defaultValue>
<Foundation.Data_Types.Expression>
<Foundation.Data_Types.Expression.language></Foundation.Data_Types.Expression.language>
<Foundation.Data_Types.Expression.body></Foundation.Data_Types.Expression.body>
</Foundation.Data_Types.Expression>
</Foundation.Core.Parameter.defaultValue>
<Foundation.Core.Parameter.kind xmi.value = 'inout' />
<Foundation.Core.Parameter.type>
<Foundation.Core.DataType xmi.idref = 'txmiid32' />
</Foundation.Core.Parameter.type>
</Foundation.Core.Parameter>
</Foundation.Core.BehavioralFeature.parameter>
</Foundation.Core.Operation>
<Foundation.Core.Operation xmi.id = 'txmiid35.O' >
<Foundation.Core.ModelElement.name>setClaim</Foundation.Core.ModelElement.name>
<Foundation.Core.ModelElement.visibility xmi.value = 'public' />
<Foundation.Core.Feature.ownerScope xmi.value = 'instance' />
<Foundation.Core.BehavioralFeature.isQuery xmi.value = 'false' />
<Foundation.Core.Operation.specification></Foundation.Core.Operation.specification>
<Foundation.Core.Operation.isPolymorphic xmi.value = 'false' />
<Foundation.Core.Operation.concurrency xmi.value = 'sequential' />
<Foundation.Core.ModelElement.stereotype>
<Foundation.Extension_Mechanisms.Stereotype xmi.idref = 'txmiid16.S' />
</Foundation.Core.ModelElement.stereotype>
</Foundation.Core.ModelElement.taggedValue>
<Foundation.Extension_Mechanisms.TaggedValue>
<Foundation.Extension_Mechanisms.TaggedValue.tag>documentation</Foundation.Extension_Mechanisms.TaggedValue.tag>
<Foundation.Extension_Mechanisms.TaggedValue.value>
</Foundation.Extension_Mechanisms.TaggedValue.value>
</Foundation.Extension_Mechanisms.TaggedValue>
</Foundation.Core.ModelElement.taggedValue>
<Foundation.Core.BehavioralFeature.parameter>
<Foundation.Core.Parameter xmi.id = 'txmiid35.Return' >
<Foundation.Core.ModelElement.name>setClaim.Return</Foundation.Core.ModelElement.name>
<Foundation.Core.ModelElement.visibility xmi.value = 'private' />
<Foundation.Core.Parameter.defaultValue>
<Foundation.Data_Types.Expression>
<Foundation.Data_Types.Expression.language></Foundation.Data_Types.Expression.language>
<Foundation.Data_Types.Expression.body></Foundation.Data_Types.Expression.body>
</Foundation.Data_Types.Expression>
</Foundation.Core.Parameter.defaultValue>
<Foundation.Core.Parameter.kind xmi.value = 'return' />
<Foundation.Core.Parameter.type>
<Foundation.Core.DataType xmi.idref = 'txmiid8' />
</Foundation.Core.Parameter.type>
</Foundation.Core.Parameter>
<Foundation.Core.Parameter xmi.id = 'txmiid35.1' >
<Foundation.Core.ModelElement.name>obj</Foundation.Core.ModelElement.name>
<Foundation.Core.ModelElement.visibility xmi.value = 'private' />
<Foundation.Core.Parameter.defaultValue>
<Foundation.Data_Types.Expression>
<Foundation.Data_Types.Expression.language></Foundation.Data_Types.Expression.language>
<Foundation.Data_Types.Expression.body></Foundation.Data_Types.Expression.body>
</Foundation.Data_Types.Expression>
```

RADs and the UML

©2005 Role Modellers Ltd

www.rolemodellers.com

```
</Foundation.Core.Parameter.defaultValue>
<Foundation.Core.Parameter.kind xmi.value = 'inout' />
<Foundation.Core.Parameter.type>
  <Foundation.Core.DataType xmi.idref = 'txmiid36' />
</Foundation.Core.Parameter.type>
</Foundation.Core.Parameter>
</Foundation.Core.BehavioralFeature.parameter>
</Foundation.Core.Operation>
<Foundation.Core.Operation xmi.id = 'txmiid37.0' >
  <Foundation.Core.ModelElement.name>giveClaimToCaseWorker</Foundation.Core.ModelElement.name>
  <Foundation.Core.ModelElement.visibility xmi.value = 'public' />
  <Foundation.Core.Feature.ownerScope xmi.value = 'instance' />
  <Foundation.Core.BehavioralFeature.isQuery xmi.value = 'false' />
  <Foundation.Core.Operation.specification></Foundation.Core.Operation.specification>
  <Foundation.Core.Operation.isPolymorphic xmi.value = 'false' />
  <Foundation.Core.Operation.concurrency xmi.value = 'sequential' />
  <Foundation.Core.ModelElement.stereotype>
    <Foundation.Extension_Mechanisms.Stereotype xmi.idref = 'txmiid1b.S' />
  </Foundation.Core.ModelElement.stereotype>
<Foundation.Core.ModelElement.taggedValue>
  <Foundation.Extension_Mechanisms.TaggedValue>

<Foundation.Extension_Mechanisms.TaggedValue.tag>documentation</Foundation.Extension_Mechanisms.TaggedValue.tag>
  <Foundation.Extension_Mechanisms.TaggedValue.value>
</Foundation.Extension_Mechanisms.TaggedValue.value>
</Foundation.Extension_Mechanisms.TaggedValue>
</Foundation.Core.ModelElement.taggedValue>
  <Foundation.Core.BehavioralFeature.parameter>
    <Foundation.Core.Parameter xmi.id = 'txmiid37.Return' >

<Foundation.Core.ModelElement.name>giveClaimToCaseWorker.Return</Foundation.Core.ModelElement.name>
  <Foundation.Core.ModelElement.visibility xmi.value = 'private' />
  <Foundation.Core.Parameter.defaultValue>
    <Foundation.Data_Types.Expression>
      <Foundation.Data_Types.Expression.language></Foundation.Data_Types.Expression.language>
      <Foundation.Data_Types.Expression.body></Foundation.Data_Types.Expression.body>
    </Foundation.Data_Types.Expression>
  </Foundation.Core.Parameter.defaultValue>
  <Foundation.Core.Parameter.kind xmi.value = 'return' />
  <Foundation.Core.Parameter.type>
    <Foundation.Core.DataType xmi.idref = 'txmiid8' />
  </Foundation.Core.Parameter.type>
</Foundation.Core.Parameter>
</Foundation.Core.BehavioralFeature.parameter>
</Foundation.Core.Operation>
<Foundation.Core.Operation xmi.id = 'txmiid38.0' >
  <Foundation.Core.ModelElement.name>maintainClaimantDetails</Foundation.Core.ModelElement.name>
  <Foundation.Core.ModelElement.visibility xmi.value = 'protected' />
  <Foundation.Core.Feature.ownerScope xmi.value = 'instance' />
  <Foundation.Core.BehavioralFeature.isQuery xmi.value = 'false' />
  <Foundation.Core.Operation.specification></Foundation.Core.Operation.specification>
  <Foundation.Core.Operation.isPolymorphic xmi.value = 'false' />
  <Foundation.Core.Operation.concurrency xmi.value = 'sequential' />
  <Foundation.Core.ModelElement.stereotype>
    <Foundation.Extension_Mechanisms.Stereotype xmi.idref = 'txmiidle.S' />
  </Foundation.Core.ModelElement.stereotype>
<Foundation.Core.ModelElement.taggedValue>
  <Foundation.Extension_Mechanisms.TaggedValue>

<Foundation.Extension_Mechanisms.TaggedValue.tag>documentation</Foundation.Extension_Mechanisms.TaggedValue.tag>
  <Foundation.Extension_Mechanisms.TaggedValue.value>
</Foundation.Extension_Mechanisms.TaggedValue.value>
</Foundation.Extension_Mechanisms.TaggedValue>
</Foundation.Core.ModelElement.taggedValue>
  <Foundation.Core.BehavioralFeature.parameter>
    <Foundation.Core.Parameter xmi.id = 'txmiid38.Return' >

<Foundation.Core.ModelElement.name>maintainClaimantDetails.Return</Foundation.Core.ModelElement.name>
  <Foundation.Core.ModelElement.visibility xmi.value = 'private' />
  <Foundation.Core.Parameter.defaultValue>
    <Foundation.Data_Types.Expression>
      <Foundation.Data_Types.Expression.language></Foundation.Data_Types.Expression.language>
      <Foundation.Data_Types.Expression.body></Foundation.Data_Types.Expression.body>
    </Foundation.Data_Types.Expression>
  </Foundation.Core.Parameter.defaultValue>
  <Foundation.Core.Parameter.kind xmi.value = 'return' />
  <Foundation.Core.Parameter.type>
    <Foundation.Core.DataType xmi.idref = 'txmiid8' />
  </Foundation.Core.Parameter.type>
```

```

    </Foundation.Core.Parameter.type>
  </Foundation.Core.Parameter>
</Foundation.Core.BehavioralFeature.parameter>
</Foundation.Core.Operation>
<Foundation.Core.Operation xmi.id = 'txmiid39.0' >
  <Foundation.Core.ModelElement.name>claimFormObtained</Foundation.Core.ModelElement.name>
  <Foundation.Core.ModelElement.visibility xmi.value = 'protected' />
  <Foundation.Core.Feature.ownerScope xmi.value = 'instance' />
  <Foundation.Core.BehavioralFeature.isQuery xmi.value = 'false' />
  <Foundation.Core.Operation.specification></Foundation.Core.Operation.specification>
  <Foundation.Core.Operation.isPolymorphic xmi.value = 'false' />
  <Foundation.Core.Operation.concurrency xmi.value = 'sequential' />
    <Foundation.Core.ModelElement.stereotype>
      <Foundation.Extension_Mechanisms.Stereotype xmi.idref = 'txmiid24.S' />
    </Foundation.Core.ModelElement.stereotype>
  <Foundation.Core.ModelElement.taggedValue>
    <Foundation.Extension_Mechanisms.TaggedValue>

<Foundation.Extension_Mechanisms.TaggedValue.tag>documentation</Foundation.Extension_Mechanisms.TaggedValue.tag>
    <Foundation.Extension_Mechanisms.TaggedValue.value>
      </Foundation.Extension_Mechanisms.TaggedValue.value>
    </Foundation.Extension_Mechanisms.TaggedValue>
  </Foundation.Core.ModelElement.taggedValue>
</Foundation.Core.BehavioralFeature.parameter>
<Foundation.Core.Parameter xmi.id = 'txmiid39.Return' >

<Foundation.Core.ModelElement.name>claimFormObtained.Return</Foundation.Core.ModelElement.name>
  <Foundation.Core.ModelElement.visibility xmi.value = 'private' />
  <Foundation.Core.Parameter.defaultValue>
    <Foundation.Data_Types.Expression>
      <Foundation.Data_Types.Expression.language></Foundation.Data_Types.Expression.language>
      <Foundation.Data_Types.Expression.body></Foundation.Data_Types.Expression.body>
    </Foundation.Data_Types.Expression>
  </Foundation.Core.Parameter.defaultValue>
  <Foundation.Core.Parameter.kind xmi.value = 'return' />
  <Foundation.Core.Parameter.type>
    <Foundation.Core.DataType xmi.idref = 'txmiid25' />
  </Foundation.Core.Parameter.type>
</Foundation.Core.Parameter>
</Foundation.Core.BehavioralFeature.parameter>
</Foundation.Core.Operation>
<Foundation.Core.Operation xmi.id = 'txmiid3a.0' >
  <Foundation.Core.ModelElement.name>claimFormIsComplete</Foundation.Core.ModelElement.name>
  <Foundation.Core.ModelElement.visibility xmi.value = 'protected' />
  <Foundation.Core.Feature.ownerScope xmi.value = 'instance' />
  <Foundation.Core.BehavioralFeature.isQuery xmi.value = 'false' />
  <Foundation.Core.Operation.specification></Foundation.Core.Operation.specification>
  <Foundation.Core.Operation.isPolymorphic xmi.value = 'false' />
  <Foundation.Core.Operation.concurrency xmi.value = 'sequential' />
    <Foundation.Core.ModelElement.stereotype>
      <Foundation.Extension_Mechanisms.Stereotype xmi.idref = 'txmiid24.S' />
    </Foundation.Core.ModelElement.stereotype>
  <Foundation.Core.ModelElement.taggedValue>
    <Foundation.Extension_Mechanisms.TaggedValue>

<Foundation.Extension_Mechanisms.TaggedValue.tag>documentation</Foundation.Extension_Mechanisms.TaggedValue.tag>
    <Foundation.Extension_Mechanisms.TaggedValue.value>
      </Foundation.Extension_Mechanisms.TaggedValue.value>
    </Foundation.Extension_Mechanisms.TaggedValue>
  </Foundation.Core.ModelElement.taggedValue>
</Foundation.Core.BehavioralFeature.parameter>
<Foundation.Core.Parameter xmi.id = 'txmiid3a.Return' >

<Foundation.Core.ModelElement.name>claimFormIsComplete.Return</Foundation.Core.ModelElement.name>
  <Foundation.Core.ModelElement.visibility xmi.value = 'private' />
  <Foundation.Core.Parameter.defaultValue>
    <Foundation.Data_Types.Expression>
      <Foundation.Data_Types.Expression.language></Foundation.Data_Types.Expression.language>
      <Foundation.Data_Types.Expression.body></Foundation.Data_Types.Expression.body>
    </Foundation.Data_Types.Expression>
  </Foundation.Core.Parameter.defaultValue>
  <Foundation.Core.Parameter.kind xmi.value = 'return' />
  <Foundation.Core.Parameter.type>
    <Foundation.Core.DataType xmi.idref = 'txmiid25' />
  </Foundation.Core.Parameter.type>
</Foundation.Core.Parameter>
</Foundation.Core.BehavioralFeature.parameter>
</Foundation.Core.Operation>
</Foundation.Core.Classifier.feature>
</Foundation.Core.Class>

```

```

<Foundation.Core.Association xmi.id = 'txmiid2f.ASS' >
<Foundation.Core.ModelElement.name></Foundation.Core.ModelElement.name>
<Foundation.Core.ModelElement.visibility xmi.value = 'private' />
<Foundation.Core.GeneralizableElement.isRoot xmi.value = 'false' />
<Foundation.Core.GeneralizableElement.isLeaf xmi.value = 'false' />
<Foundation.Core.GeneralizableElement.isAbstract xmi.value = 'false' />
<Foundation.Core.Association.connection>
  <Foundation.Core.AssociationEnd xmi.id = 'txmiid2f.CE' >
    <Foundation.Core.ModelElement.name></Foundation.Core.ModelElement.name>
    <Foundation.Core.ModelElement.visibility xmi.value = 'public' />
    <Foundation.Core.AssociationEnd.isNavigable xmi.value = 'false' />
    <Foundation.Core.AssociationEnd.isOrdered xmi.value = 'false' />
    <Foundation.Core.AssociationEnd.aggregation xmi.value = 'none' />
    <Foundation.Core.AssociationEnd.multiplicity></Foundation.Core.AssociationEnd.multiplicity>
    <Foundation.Core.AssociationEnd.changeable xmi.value = 'none' />
    <Foundation.Core.AssociationEnd.targetScope xmi.value = 'instance' />
    <Foundation.Core.AssociationEnd.type>
      <Foundation.Core.Class xmi.idref = 'txmiid28' />
    </Foundation.Core.AssociationEnd.type>
  </Foundation.Core.AssociationEnd>
  <Foundation.Core.AssociationEnd xmi.id = 'txmiid2f.SE' >
    <Foundation.Core.ModelElement.name></Foundation.Core.ModelElement.name>
    <Foundation.Core.ModelElement.visibility xmi.value = 'public' />
    <Foundation.Core.AssociationEnd.isNavigable xmi.value = 'false' />
    <Foundation.Core.AssociationEnd.isOrdered xmi.value = 'false' />
    <Foundation.Core.AssociationEnd.aggregation xmi.value = 'none' />
    <Foundation.Core.AssociationEnd.multiplicity></Foundation.Core.AssociationEnd.multiplicity>
    <Foundation.Core.AssociationEnd.changeable xmi.value = 'none' />
    <Foundation.Core.AssociationEnd.targetScope xmi.value = 'instance' />
    <Foundation.Core.AssociationEnd.type>
      <Foundation.Core.Class xmi.idref = 'txmiida' />
    </Foundation.Core.AssociationEnd.type>
  </Foundation.Core.AssociationEnd>
</Foundation.Core.Association.connection>
</Foundation.Core.Association>
<Foundation.Core.Association xmi.id = 'txmiid30.ASS' >
<Foundation.Core.ModelElement.name></Foundation.Core.ModelElement.name>
<Foundation.Core.ModelElement.visibility xmi.value = 'private' />
<Foundation.Core.GeneralizableElement.isRoot xmi.value = 'false' />
<Foundation.Core.GeneralizableElement.isLeaf xmi.value = 'false' />
<Foundation.Core.GeneralizableElement.isAbstract xmi.value = 'false' />
<Foundation.Core.Association.connection>
  <Foundation.Core.AssociationEnd xmi.id = 'txmiid30.CE' >
    <Foundation.Core.ModelElement.name></Foundation.Core.ModelElement.name>
    <Foundation.Core.ModelElement.visibility xmi.value = 'public' />
    <Foundation.Core.AssociationEnd.isNavigable xmi.value = 'false' />
    <Foundation.Core.AssociationEnd.isOrdered xmi.value = 'false' />
    <Foundation.Core.AssociationEnd.aggregation xmi.value = 'none' />
    <Foundation.Core.AssociationEnd.multiplicity></Foundation.Core.AssociationEnd.multiplicity>
    <Foundation.Core.AssociationEnd.changeable xmi.value = 'none' />
    <Foundation.Core.AssociationEnd.targetScope xmi.value = 'instance' />
    <Foundation.Core.AssociationEnd.type>
      <Foundation.Core.Class xmi.idref = 'txmiid28' />
    </Foundation.Core.AssociationEnd.type>
  </Foundation.Core.AssociationEnd>
  <Foundation.Core.AssociationEnd xmi.id = 'txmiid30.SE' >
    <Foundation.Core.ModelElement.name></Foundation.Core.ModelElement.name>
    <Foundation.Core.ModelElement.visibility xmi.value = 'public' />
    <Foundation.Core.AssociationEnd.isNavigable xmi.value = 'false' />
    <Foundation.Core.AssociationEnd.isOrdered xmi.value = 'false' />
    <Foundation.Core.AssociationEnd.aggregation xmi.value = 'none' />
    <Foundation.Core.AssociationEnd.multiplicity></Foundation.Core.AssociationEnd.multiplicity>
    <Foundation.Core.AssociationEnd.changeable xmi.value = 'none' />
    <Foundation.Core.AssociationEnd.targetScope xmi.value = 'instance' />
    <Foundation.Core.AssociationEnd.type>
      <Foundation.Core.Class xmi.idref = 'txmiid2a' />
    </Foundation.Core.AssociationEnd.type>
  </Foundation.Core.AssociationEnd>
</Foundation.Core.Association.connection>
</Foundation.Core.Association>
<Foundation.Core.Generalization xmi.id = 'ClaimantRole.G' >
<Foundation.Core.ModelElement.name></Foundation.Core.ModelElement.name>
<Foundation.Core.ModelElement.visibility xmi.value = 'public' />
<Foundation.Core.Generalization.discriminator></Foundation.Core.Generalization.discriminator>
<Foundation.Core.Generalization.subtype>
  <Foundation.Core.Class xmi.idref = 'txmiid28' />
</Foundation.Core.Generalization.subtype>
<Foundation.Core.Generalization.supertype>
  <Foundation.Core.Class xmi.idref = 'txmiid2b' />
</Foundation.Core.Generalization.supertype>
</Foundation.Core.Generalization>
<Foundation.Core.Class xmi.id = 'txmiid3b' >

```

```

<Foundation.Core.ModelElement.name>ClaimsSystem</Foundation.Core.ModelElement.name>
<Foundation.Core.ModelElement.visibility xmi.value = 'public' />
<Foundation.Core.GeneralizableElement.isRoot xmi.value = 'false' />
<Foundation.Core.GeneralizableElement.isLeaf xmi.value = 'false' />
<Foundation.Core.GeneralizableElement.isAbstract xmi.value = 'false' />
<Foundation.Core.Class.isActive xmi.value = 'false' />
<Foundation.Core.ModelElement.stereotype>
  <Foundation.Extension_Mechanisms.Stereotype xmi.idref = 'txmiid3c.S' />
</Foundation.Core.ModelElement.stereotype>
<Foundation.Core.ModelElement.namespace>
  <Model_Management.Package xmi.idref = 'txmiid1' />
</Foundation.Core.ModelElement.namespace>
<Foundation.Core.ModelElement.taggedValue>
  <Foundation.Extension_Mechanisms.TaggedValue>

<Foundation.Extension_Mechanisms.TaggedValue.tag>documentation</Foundation.Extension_Mechanisms.TaggedValue.tag>
  <Foundation.Extension_Mechanisms.TaggedValue.value>
    </Foundation.Extension_Mechanisms.TaggedValue.value>
  </Foundation.Extension_Mechanisms.TaggedValue>
</Foundation.Core.ModelElement.taggedValue>
<Foundation.Core.Classifier.feature>
  <Foundation.Core.Operation xmi.id = 'txmiid3d.O' >
    <Foundation.Core.ModelElement.name>newClaim</Foundation.Core.ModelElement.name>
    <Foundation.Core.ModelElement.visibility xmi.value = 'public' />
    <Foundation.Core.Feature.ownerScope xmi.value = 'instance' />
    <Foundation.Core.BehavioralFeature.isQuery xmi.value = 'false' />
    <Foundation.Core.Operation.specification></Foundation.Core.Operation.specification>
    <Foundation.Core.Operation.isPolymorphic xmi.value = 'false' />
    <Foundation.Core.Operation.concurrency xmi.value = 'sequential' />
    <Foundation.Core.ModelElement.stereotype>
      <Foundation.Extension_Mechanisms.Stereotype xmi.idref = 'txmiid20.S' />
    </Foundation.Core.ModelElement.stereotype>
  </Foundation.Core.ModelElement.taggedValue>
  <Foundation.Extension_Mechanisms.TaggedValue>

<Foundation.Extension_Mechanisms.TaggedValue.tag>documentation</Foundation.Extension_Mechanisms.TaggedValue.tag>
  <Foundation.Extension_Mechanisms.TaggedValue.value>
    </Foundation.Extension_Mechanisms.TaggedValue.value>
  </Foundation.Extension_Mechanisms.TaggedValue>
</Foundation.Core.ModelElement.taggedValue>
<Foundation.Core.BehavioralFeature.parameter>
  <Foundation.Core.Parameter xmi.id = 'txmiid3d.Return' >
    <Foundation.Core.ModelElement.name>newClaim.Return</Foundation.Core.ModelElement.name>
    <Foundation.Core.ModelElement.visibility xmi.value = 'private' />
    <Foundation.Core.Parameter.defaultValue>
      <Foundation.Data_Types.Expression>
        <Foundation.Data_Types.Expression.language></Foundation.Data_Types.Expression.language>
        <Foundation.Data_Types.Expression.body></Foundation.Data_Types.Expression.body>
      </Foundation.Data_Types.Expression>
    </Foundation.Core.Parameter.defaultValue>
    <Foundation.Core.Parameter.kind xmi.value = 'return' />
    <Foundation.Core.Parameter.type>
      <Foundation.Core.DataType xmi.idref = 'txmiid36' />
    </Foundation.Core.Parameter.type>
  </Foundation.Core.Parameter>
  <Foundation.Core.Parameter xmi.id = 'txmiid3d.l1' >
    <Foundation.Core.ModelElement.name>policyNumber</Foundation.Core.ModelElement.name>
    <Foundation.Core.ModelElement.visibility xmi.value = 'private' />
    <Foundation.Core.Parameter.defaultValue>
      <Foundation.Data_Types.Expression>
        <Foundation.Data_Types.Expression.language></Foundation.Data_Types.Expression.language>
        <Foundation.Data_Types.Expression.body></Foundation.Data_Types.Expression.body>
      </Foundation.Data_Types.Expression>
    </Foundation.Core.Parameter.defaultValue>
    <Foundation.Core.Parameter.kind xmi.value = 'inout' />
    <Foundation.Core.Parameter.type>
      <Foundation.Core.DataType xmi.idref = 'txmiid21' />
    </Foundation.Core.Parameter.type>
  </Foundation.Core.Parameter>
</Foundation.Core.BehavioralFeature.parameter>
</Foundation.Core.Operation>
<Foundation.Core.Operation xmi.id = 'txmiid3e.O' >
  <Foundation.Core.ModelElement.name>admit</Foundation.Core.ModelElement.name>
  <Foundation.Core.ModelElement.visibility xmi.value = 'public' />
  <Foundation.Core.Feature.ownerScope xmi.value = 'instance' />
  <Foundation.Core.BehavioralFeature.isQuery xmi.value = 'false' />
  <Foundation.Core.Operation.specification></Foundation.Core.Operation.specification>
  <Foundation.Core.Operation.isPolymorphic xmi.value = 'false' />
  <Foundation.Core.Operation.concurrency xmi.value = 'sequential' />
  <Foundation.Core.ModelElement.stereotype>

```

RADs and the UML

©2005 Role Modellers Ltd

www.rolemodellers.com

```
<Foundation.Extension_Mechanisms.Stereotype xmi.idref = 'txmiid20.S' />
</Foundation.Core.ModelElement.stereotype>
<Foundation.Core.ModelElement.taggedValue>
  <Foundation.Extension_Mechanisms.TaggedValue>
</Foundation.Extension_Mechanisms.TaggedValue.tag>documentation</Foundation.Extension_Mechanisms.TaggedValue.tag>
  <Foundation.Extension_Mechanisms.TaggedValue.value>
</Foundation.Extension_Mechanisms.TaggedValue.value>
</Foundation.Extension_Mechanisms.TaggedValue>
</Foundation.Core.ModelElement.taggedValue>
<Foundation.Core.BehavioralFeature.parameter>
  <Foundation.Core.Parameter xmi.id = 'txmiid3e.Return' >
    <Foundation.Core.ModelElement.name>admit.Return</Foundation.Core.ModelElement.name>
    <Foundation.Core.ModelElement.visibility xmi.value = 'private' />
    <Foundation.Core.Parameter.defaultValue>
      <Foundation.Data_Types.Expression>
        <Foundation.Data_Types.Expression.language></Foundation.Data_Types.Expression.language>
        <Foundation.Data_Types.Expression.body></Foundation.Data_Types.Expression.body>
      </Foundation.Data_Types.Expression>
    </Foundation.Core.Parameter.defaultValue>
    <Foundation.Core.Parameter.kind xmi.value = 'return' />
    <Foundation.Core.Parameter.type>
      <Foundation.Core.DataType xmi.idref = 'txmiid8' />
    </Foundation.Core.Parameter.type>
  </Foundation.Core.Parameter>
<Foundation.Core.Parameter xmi.id = 'txmiid3e.1' >
  <Foundation.Core.ModelElement.name>claim</Foundation.Core.ModelElement.name>
  <Foundation.Core.ModelElement.visibility xmi.value = 'private' />
  <Foundation.Core.Parameter.defaultValue>
    <Foundation.Data_Types.Expression>
      <Foundation.Data_Types.Expression.language></Foundation.Data_Types.Expression.language>
      <Foundation.Data_Types.Expression.body></Foundation.Data_Types.Expression.body>
    </Foundation.Data_Types.Expression>
  </Foundation.Core.Parameter.defaultValue>
  <Foundation.Core.Parameter.kind xmi.value = 'inout' />
  <Foundation.Core.Parameter.type>
    <Foundation.Core.DataType xmi.idref = 'txmiid36' />
  </Foundation.Core.Parameter.type>
</Foundation.Core.Parameter>
<Foundation.Core.Parameter xmi.id = 'txmiid3e.2' >
  <Foundation.Core.ModelElement.name>admit</Foundation.Core.ModelElement.name>
  <Foundation.Core.ModelElement.visibility xmi.value = 'private' />
  <Foundation.Core.Parameter.defaultValue>
    <Foundation.Data_Types.Expression>
      <Foundation.Data_Types.Expression.language></Foundation.Data_Types.Expression.language>
      <Foundation.Data_Types.Expression.body></Foundation.Data_Types.Expression.body>
    </Foundation.Data_Types.Expression>
  </Foundation.Core.Parameter.defaultValue>
  <Foundation.Core.Parameter.kind xmi.value = 'inout' />
  <Foundation.Core.Parameter.type>
    <Foundation.Core.DataType xmi.idref = 'txmiid25' />
  </Foundation.Core.Parameter.type>
</Foundation.Core.Parameter>
</Foundation.Core.BehavioralFeature.parameter>
</Foundation.Core.Operation>
<Foundation.Core.Operation xmi.id = 'txmiid3f.O' >
  <Foundation.Core.ModelElement.name>reserveFunds</Foundation.Core.ModelElement.name>
  <Foundation.Core.ModelElement.visibility xmi.value = 'public' />
  <Foundation.Core.Feature.ownerScope xmi.value = 'instance' />
  <Foundation.Core.BehavioralFeature.isQuery xmi.value = 'false' />
  <Foundation.Core.Operation.specification></Foundation.Core.Operation.specification>
  <Foundation.Core.Operation.isPolymorphic xmi.value = 'false' />
  <Foundation.Core.Operation.concurrency xmi.value = 'sequential' />
  <Foundation.Core.ModelElement.stereotype>
    <Foundation.Extension_Mechanisms.Stereotype xmi.idref = 'txmiid20.S' />
  </Foundation.Core.ModelElement.stereotype>
</Foundation.Core.ModelElement.taggedValue>
<Foundation.Extension_Mechanisms.TaggedValue>
</Foundation.Extension_Mechanisms.TaggedValue.tag>documentation</Foundation.Extension_Mechanisms.TaggedValue.tag>
  <Foundation.Extension_Mechanisms.TaggedValue.value>
</Foundation.Extension_Mechanisms.TaggedValue.value>
</Foundation.Extension_Mechanisms.TaggedValue>
</Foundation.Core.ModelElement.taggedValue>
<Foundation.Core.BehavioralFeature.parameter>
  <Foundation.Core.Parameter xmi.id = 'txmiid3f.Return' >
    <Foundation.Core.ModelElement.name>reserveFunds.Return</Foundation.Core.ModelElement.name>
    <Foundation.Core.ModelElement.visibility xmi.value = 'private' />
    <Foundation.Core.Parameter.defaultValue>
      <Foundation.Data_Types.Expression>
```

```

        <Foundation.Data_Types.Expression.language></Foundation.Data_Types.Expression.language>
        <Foundation.Data_Types.Expression.body></Foundation.Data_Types.Expression.body>
    </Foundation.Data_Types.Expression>
</Foundation.Core.Parameter.defaultValue>
<Foundation.Core.Parameter.kind xmi.value = 'return' />
<Foundation.Core.Parameter.type>
    <Foundation.Core.DataType xmi.idref = 'txmiid8' />
</Foundation.Core.Parameter.type>
</Foundation.Core.Parameter>
<Foundation.Core.Parameter xmi.id = 'txmiid3f.1' >
<Foundation.Core.ModelElement.name>claim</Foundation.Core.ModelElement.name>
<Foundation.Core.ModelElement.visibility xmi.value = 'private' />
<Foundation.Core.Parameter.defaultValue>
    <Foundation.Data_Types.Expression>
        <Foundation.Data_Types.Expression.language></Foundation.Data_Types.Expression.language>
        <Foundation.Data_Types.Expression.body></Foundation.Data_Types.Expression.body>
    </Foundation.Data_Types.Expression>
</Foundation.Core.Parameter.defaultValue>
<Foundation.Core.Parameter.kind xmi.value = 'inout' />
<Foundation.Core.Parameter.type>
    <Foundation.Core.DataType xmi.idref = 'txmiid36' />
</Foundation.Core.Parameter.type>
</Foundation.Core.Parameter>
<Foundation.Core.Parameter xmi.id = 'txmiid3f.2' >
<Foundation.Core.ModelElement.name>amount</Foundation.Core.ModelElement.name>
<Foundation.Core.ModelElement.visibility xmi.value = 'private' />
<Foundation.Core.Parameter.defaultValue>
    <Foundation.Data_Types.Expression>
        <Foundation.Data_Types.Expression.language></Foundation.Data_Types.Expression.language>
        <Foundation.Data_Types.Expression.body></Foundation.Data_Types.Expression.body>
    </Foundation.Data_Types.Expression>
</Foundation.Core.Parameter.defaultValue>
<Foundation.Core.Parameter.kind xmi.value = 'inout' />
<Foundation.Core.Parameter.type>
    <Foundation.Core.DataType xmi.idref = 'txmiid21' />
</Foundation.Core.Parameter.type>
</Foundation.Core.Parameter>
</Foundation.Core.BehavioralFeature.parameter>
</Foundation.Core.Operation>
<Foundation.Core.Operation xmi.id = 'txmiid40.0' >
<Foundation.Core.ModelElement.name>maintainClaimantDetails</Foundation.Core.ModelElement.name>
<Foundation.Core.ModelElement.visibility xmi.value = 'public' />
<Foundation.Core.Feature.ownerScope xmi.value = 'instance' />
<Foundation.Core.BehavioralFeature.isQuery xmi.value = 'false' />
<Foundation.Core.Operation.specification></Foundation.Core.Operation.specification>
<Foundation.Core.Operation.isPolymorphic xmi.value = 'false' />
<Foundation.Core.Operation.concurrency xmi.value = 'sequential' />
    <Foundation.Core.ModelElement.stereotype>
        <Foundation.Extension_Mechanisms.Stereotype xmi.idref = 'txmiidle.S' />
    </Foundation.Core.ModelElement.stereotype>
<Foundation.Core.ModelElement.taggedValue>
    <Foundation.Extension_Mechanisms.TaggedValue>

<Foundation.Extension_Mechanisms.TaggedValue.tag>documentation</Foundation.Extension_Mechanisms.TaggedValue.tag>
    <Foundation.Extension_Mechanisms.TaggedValue.value>
</Foundation.Extension_Mechanisms.TaggedValue.value>
</Foundation.Extension_Mechanisms.TaggedValue>
</Foundation.Core.ModelElement.taggedValue>
<Foundation.Core.BehavioralFeature.parameter>
    <Foundation.Core.Parameter xmi.id = 'txmiid40.Return' >

<Foundation.Core.ModelElement.name>maintainClaimantDetails.Return</Foundation.Core.ModelElement.name>
    <Foundation.Core.ModelElement.visibility xmi.value = 'private' />
    <Foundation.Core.Parameter.defaultValue>
        <Foundation.Data_Types.Expression>
            <Foundation.Data_Types.Expression.language></Foundation.Data_Types.Expression.language>
            <Foundation.Data_Types.Expression.body></Foundation.Data_Types.Expression.body>
        </Foundation.Data_Types.Expression>
    </Foundation.Core.Parameter.defaultValue>
    <Foundation.Core.Parameter.kind xmi.value = 'return' />
    <Foundation.Core.Parameter.type>
        <Foundation.Core.DataType xmi.idref = 'txmiid41' />
    </Foundation.Core.Parameter.type>
</Foundation.Core.Parameter>
<Foundation.Core.Parameter xmi.id = 'txmiid40.1' >
<Foundation.Core.ModelElement.name>claim</Foundation.Core.ModelElement.name>
<Foundation.Core.ModelElement.visibility xmi.value = 'private' />
<Foundation.Core.Parameter.defaultValue>
    <Foundation.Data_Types.Expression>
        <Foundation.Data_Types.Expression.language></Foundation.Data_Types.Expression.language>

```

RADs and the UML

©2005 Role Modellers Ltd

www.rolemodellers.com

```
<Foundation.Data_Types.Expression.body></Foundation.Data_Types.Expression.body>
</Foundation.Data_Types.Expression>
</Foundation.Core.Parameter.defaultValue>
<Foundation.Core.Parameter.kind xmi.value = 'inout' />
<Foundation.Core.Parameter.type>
<Foundation.Core.DataType xmi.idref = 'txmiid36' />
</Foundation.Core.Parameter.type>
</Foundation.Core.Parameter>
</Foundation.Core.BehavioralFeature.parameter>
</Foundation.Core.Operation>
<Foundation.Core.Operation xmi.id = 'txmiid42.0' >
<Foundation.Core.ModelElement.name>maintainClaimDetails</Foundation.Core.ModelElement.name>
<Foundation.Core.ModelElement.visibility xmi.value = 'public' />
<Foundation.Core.Feature.ownerScope xmi.value = 'instance' />
<Foundation.Core.BehavioralFeature.isQuery xmi.value = 'false' />
<Foundation.Core.Operation.specification></Foundation.Core.Operation.specification>
<Foundation.Core.Operation.isPolymorphic xmi.value = 'false' />
<Foundation.Core.Operation.concurrency xmi.value = 'sequential' />
<Foundation.Core.ModelElement.stereotype>
<Foundation.Extension_Mechanisms.Stereotype xmi.idref = 'txmiidle.S' />
</Foundation.Core.ModelElement.stereotype>
</Foundation.Core.ModelElement.taggedValue>
<Foundation.Extension_Mechanisms.TaggedValue>
<Foundation.Extension_Mechanisms.TaggedValue.tag>documentation</Foundation.Extension_Mechanisms.TaggedValue.tag>
<Foundation.Extension_Mechanisms.TaggedValue.value>
</Foundation.Extension_Mechanisms.TaggedValue.value>
</Foundation.Extension_Mechanisms.TaggedValue>
</Foundation.Core.ModelElement.taggedValue>
<Foundation.Core.BehavioralFeature.parameter>
<Foundation.Core.Parameter xmi.id = 'txmiid42.Return' >
<Foundation.Core.ModelElement.name>maintainClaimDetails.Return</Foundation.Core.ModelElement.name>
<Foundation.Core.ModelElement.visibility xmi.value = 'private' />
<Foundation.Core.Parameter.defaultValue>
<Foundation.Data_Types.Expression>
<Foundation.Data_Types.Expression.language></Foundation.Data_Types.Expression.language>
<Foundation.Data_Types.Expression.body></Foundation.Data_Types.Expression.body>
</Foundation.Data_Types.Expression>
</Foundation.Core.Parameter.defaultValue>
<Foundation.Core.Parameter.kind xmi.value = 'return' />
<Foundation.Core.Parameter.type>
<Foundation.Core.DataType xmi.idref = 'txmiid41' />
</Foundation.Core.Parameter.type>
</Foundation.Core.Parameter>
<Foundation.Core.Parameter xmi.id = 'txmiid42.1' >
<Foundation.Core.ModelElement.name>claim</Foundation.Core.ModelElement.name>
<Foundation.Core.ModelElement.visibility xmi.value = 'private' />
<Foundation.Core.Parameter.defaultValue>
<Foundation.Data_Types.Expression>
<Foundation.Data_Types.Expression.language></Foundation.Data_Types.Expression.language>
<Foundation.Data_Types.Expression.body></Foundation.Data_Types.Expression.body>
</Foundation.Data_Types.Expression>
</Foundation.Core.Parameter.defaultValue>
<Foundation.Core.Parameter.kind xmi.value = 'inout' />
<Foundation.Core.Parameter.type>
<Foundation.Core.DataType xmi.idref = 'txmiid36' />
</Foundation.Core.Parameter.type>
</Foundation.Core.Parameter>
</Foundation.Core.BehavioralFeature.parameter>
</Foundation.Core.Operation>
</Foundation.Core.Classifier.feature>
</Foundation.Core.Class>
<Foundation.Core.Class xmi.id = 'txmiid2b' >
<Foundation.Core.ModelElement.name>Role</Foundation.Core.ModelElement.name>
<Foundation.Core.ModelElement.visibility xmi.value = 'public' />
<Foundation.Core.GeneralizableElement.isRoot xmi.value = 'false' />
<Foundation.Core.GeneralizableElement.isLeaf xmi.value = 'false' />
<Foundation.Core.GeneralizableElement.isAbstract xmi.value = 'false' />
<Foundation.Core.Class.isActive xmi.value = 'false' />
<Foundation.Core.ModelElement.stereotype>
<Foundation.Extension_Mechanisms.Stereotype xmi.idref = 'txmiidb.S' />
</Foundation.Core.ModelElement.stereotype>
<Foundation.Core.ModelElement.namespace>
<Model_Management.Package xmi.idref = 'txmiid1' />
</Foundation.Core.ModelElement.namespace>
</Foundation.Core.ModelElement.taggedValue>
<Foundation.Extension_Mechanisms.TaggedValue>
<Foundation.Extension_Mechanisms.TaggedValue.tag>documentation</Foundation.Extension_Mechanisms.TaggedValue.tag>
```

RADs and the UML

©2005 Role Modellers Ltd

www.rolemodellers.com

```
<Foundation.Extension_Mechanisms.TaggedValue.value>
</Foundation.Extension_Mechanisms.TaggedValue.value>
</Foundation.Extension_Mechanisms.TaggedValue>
</Foundation.Core.ModelElement.taggedValue>
<Foundation.Core.Classifier.feature>
<Foundation.Core.Operation xmi.id = 'txmiid43.0' >
<Foundation.Core.ModelElement.name>Role</Foundation.Core.ModelElement.name>
<Foundation.Core.ModelElement.visibility xmi.value = 'public' />
<Foundation.Core.Feature.ownerScope xmi.value = 'instance' />
<Foundation.Core.BehavioralFeature.isQuery xmi.value = 'false' />
<Foundation.Core.Operation.specification></Foundation.Core.Operation.specification>
<Foundation.Core.Operation.isPolymorphic xmi.value = 'false' />
<Foundation.Core.Operation.concurrency xmi.value = 'sequential' />
<Foundation.Core.ModelElement.stereotype>
<Foundation.Extension_Mechanisms.Stereotype xmi.idref = 'txmiid44.S' />
</Foundation.Core.ModelElement.stereotype>
</Foundation.Core.ModelElement.taggedValue>
<Foundation.Extension_Mechanisms.TaggedValue>

<Foundation.Extension_Mechanisms.TaggedValue.tag>documentation</Foundation.Extension_Mechanisms.TaggedValue.tag>
<Foundation.Extension_Mechanisms.TaggedValue.value>
</Foundation.Extension_Mechanisms.TaggedValue.value>
</Foundation.Extension_Mechanisms.TaggedValue>
</Foundation.Core.ModelElement.taggedValue>
<Foundation.Core.BehavioralFeature.parameter>
<Foundation.Core.Parameter xmi.id = 'txmiid43.1' >
<Foundation.Core.ModelElement.name>actorInstance</Foundation.Core.ModelElement.name>
<Foundation.Core.ModelElement.visibility xmi.value = 'private' />
<Foundation.Core.Parameter.defaultValue>
<Foundation.Data_Types.Expression>
<Foundation.Data_Types.Expression.language></Foundation.Data_Types.Expression.language>
<Foundation.Data_Types.Expression.body></Foundation.Data_Types.Expression.body>
</Foundation.Data_Types.Expression>
</Foundation.Core.Parameter.defaultValue>
<Foundation.Core.Parameter.kind xmi.value = 'inout' />
<Foundation.Core.Parameter.type>
<Foundation.Core.DataType xmi.idref = 'txmiid45' />
</Foundation.Core.Parameter.type>
</Foundation.Core.Parameter>
</Foundation.Core.BehavioralFeature.parameter>
</Foundation.Core.Operation>
<Foundation.Core.Operation xmi.id = 'txmiid46.0' >
<Foundation.Core.ModelElement.name>openURL</Foundation.Core.ModelElement.name>
<Foundation.Core.ModelElement.visibility xmi.value = 'protected' />
<Foundation.Core.Feature.ownerScope xmi.value = 'instance' />
<Foundation.Core.BehavioralFeature.isQuery xmi.value = 'false' />
<Foundation.Core.Operation.specification></Foundation.Core.Operation.specification>
<Foundation.Core.Operation.isPolymorphic xmi.value = 'false' />
<Foundation.Core.Operation.concurrency xmi.value = 'sequential' />
</Foundation.Core.ModelElement.taggedValue>
<Foundation.Extension_Mechanisms.TaggedValue>

<Foundation.Extension_Mechanisms.TaggedValue.tag>documentation</Foundation.Extension_Mechanisms.TaggedValue.tag>
<Foundation.Extension_Mechanisms.TaggedValue.value>
</Foundation.Extension_Mechanisms.TaggedValue.value>
</Foundation.Extension_Mechanisms.TaggedValue>
</Foundation.Core.ModelElement.taggedValue>
<Foundation.Core.BehavioralFeature.parameter>
<Foundation.Core.Parameter xmi.id = 'txmiid46.Return' >
<Foundation.Core.ModelElement.name>openURL.Return</Foundation.Core.ModelElement.name>
<Foundation.Core.ModelElement.visibility xmi.value = 'private' />
<Foundation.Core.Parameter.defaultValue>
<Foundation.Data_Types.Expression>
<Foundation.Data_Types.Expression.language></Foundation.Data_Types.Expression.language>
<Foundation.Data_Types.Expression.body></Foundation.Data_Types.Expression.body>
</Foundation.Data_Types.Expression>
</Foundation.Core.Parameter.defaultValue>
<Foundation.Core.Parameter.kind xmi.value = 'return' />
<Foundation.Core.Parameter.type>
<Foundation.Core.DataType xmi.idref = 'txmiid8' />
</Foundation.Core.Parameter.type>
</Foundation.Core.Parameter>
<Foundation.Core.Parameter xmi.id = 'txmiid46.1' >
<Foundation.Core.ModelElement.name>formURL</Foundation.Core.ModelElement.name>
<Foundation.Core.ModelElement.visibility xmi.value = 'private' />
<Foundation.Core.Parameter.defaultValue>
<Foundation.Data_Types.Expression>
<Foundation.Data_Types.Expression.language></Foundation.Data_Types.Expression.language>
<Foundation.Data_Types.Expression.body></Foundation.Data_Types.Expression.body>
</Foundation.Data_Types.Expression>
```


RADs and the UML

©2005 Role Modellers Ltd

www.rolemodellers.com

```
</Foundation.Core.Attribute.initialValue>
<Foundation.Core.StructuralFeature.type>
  <Foundation.Core.DataType xmi.idref = 'txmiid14' />
</Foundation.Core.StructuralFeature.type>
<Foundation.Core.ModelElement.taggedValue>
  <Foundation.Extension_Mechanisms.TaggedValue>

<Foundation.Extension_Mechanisms.TaggedValue.tag>documentation</Foundation.Extension_Mechanisms.TaggedValue.tag>
  <Foundation.Extension_Mechanisms.TaggedValue.value>
    </Foundation.Extension_Mechanisms.TaggedValue.value>
  </Foundation.Extension_Mechanisms.TaggedValue>
</Foundation.Core.ModelElement.taggedValue>
</Foundation.Core.Attribute>
<Foundation.Core.Operation xmi.id = 'txmiid4b.0' >
  <Foundation.Core.ModelElement.name>setCaseWorker</Foundation.Core.ModelElement.name>
  <Foundation.Core.ModelElement.visibility xmi.value = 'public' />
  <Foundation.Core.Feature.ownerScope xmi.value = 'instance' />
  <Foundation.Core.BehavioralFeature.isQuery xmi.value = 'false' />
  <Foundation.Core.Operation.specification></Foundation.Core.Operation.specification>
  <Foundation.Core.Operation.isPolymorphic xmi.value = 'false' />
  <Foundation.Core.Operation.concurrency xmi.value = 'sequential' />
  <Foundation.Core.ModelElement.stereotype>
    <Foundation.Extension_Mechanisms.Stereotype xmi.idref = 'txmiid16.S' />
  </Foundation.Core.ModelElement.stereotype>
<Foundation.Core.ModelElement.taggedValue>
  <Foundation.Extension_Mechanisms.TaggedValue>

<Foundation.Extension_Mechanisms.TaggedValue.tag>documentation</Foundation.Extension_Mechanisms.TaggedValue.tag>
  <Foundation.Extension_Mechanisms.TaggedValue.value>
    </Foundation.Extension_Mechanisms.TaggedValue.value>
  </Foundation.Extension_Mechanisms.TaggedValue>
</Foundation.Core.ModelElement.taggedValue>
<Foundation.Core.BehavioralFeature.parameter>
  <Foundation.Core.Parameter xmi.id = 'txmiid4b.Return' >
    <Foundation.Core.ModelElement.name>setCaseWorker.Return</Foundation.Core.ModelElement.name>
    <Foundation.Core.ModelElement.visibility xmi.value = 'private' />
    <Foundation.Core.Parameter.defaultValue>
      <Foundation.Data_Types.Expression>
        <Foundation.Data_Types.Expression.language></Foundation.Data_Types.Expression.language>
        <Foundation.Data_Types.Expression.body></Foundation.Data_Types.Expression.body>
      </Foundation.Data_Types.Expression>
    </Foundation.Core.Parameter.defaultValue>
    <Foundation.Core.Parameter.kind xmi.value = 'return' />
    <Foundation.Core.Parameter.type>
      <Foundation.Core.DataType xmi.idref = 'txmiid8' />
    </Foundation.Core.Parameter.type>
  </Foundation.Core.Parameter>
  <Foundation.Core.Parameter xmi.id = 'txmiid4b.1' >
    <Foundation.Core.ModelElement.name>obj</Foundation.Core.ModelElement.name>
    <Foundation.Core.ModelElement.visibility xmi.value = 'private' />
    <Foundation.Core.Parameter.defaultValue>
      <Foundation.Data_Types.Expression>
        <Foundation.Data_Types.Expression.language></Foundation.Data_Types.Expression.language>
        <Foundation.Data_Types.Expression.body></Foundation.Data_Types.Expression.body>
      </Foundation.Data_Types.Expression>
    </Foundation.Core.Parameter.defaultValue>
    <Foundation.Core.Parameter.kind xmi.value = 'inout' />
    <Foundation.Core.Parameter.type>
      <Foundation.Core.DataType xmi.idref = 'txmiid32' />
    </Foundation.Core.Parameter.type>
  </Foundation.Core.Parameter>
</Foundation.Core.BehavioralFeature.parameter>
</Foundation.Core.Operation>
<Foundation.Core.Operation xmi.id = 'txmiid4c.0' >
  <Foundation.Core.ModelElement.name>setClaim</Foundation.Core.ModelElement.name>
  <Foundation.Core.ModelElement.visibility xmi.value = 'public' />
  <Foundation.Core.Feature.ownerScope xmi.value = 'instance' />
  <Foundation.Core.BehavioralFeature.isQuery xmi.value = 'false' />
  <Foundation.Core.Operation.specification></Foundation.Core.Operation.specification>
  <Foundation.Core.Operation.isPolymorphic xmi.value = 'false' />
  <Foundation.Core.Operation.concurrency xmi.value = 'sequential' />
  <Foundation.Core.ModelElement.stereotype>
    <Foundation.Extension_Mechanisms.Stereotype xmi.idref = 'txmiid16.S' />
  </Foundation.Core.ModelElement.stereotype>
<Foundation.Core.ModelElement.taggedValue>
  <Foundation.Extension_Mechanisms.TaggedValue>

<Foundation.Extension_Mechanisms.TaggedValue.tag>documentation</Foundation.Extension_Mechanisms.TaggedValue.tag>
  <Foundation.Extension_Mechanisms.TaggedValue.value>
```

RADs and the UML

©2005 Role Modellers Ltd

www.rolemodellers.com

```
</Foundation.Extension_Mechanisms.TaggedValue.value>
</Foundation.Extension_Mechanisms.TaggedValue>
</Foundation.Core.ModelElement.taggedValue>
<Foundation.Core.BehavioralFeature.parameter>
<Foundation.Core.Parameter xmi.id = 'txmiid4c.Return' >
<Foundation.Core.ModelElement.name>setClaim.Return</Foundation.Core.ModelElement.name>
<Foundation.Core.ModelElement.visibility xmi.value = 'private' />
<Foundation.Core.Parameter.defaultValue>
<Foundation.Data_Types.Expression>
<Foundation.Data_Types.Expression.language></Foundation.Data_Types.Expression.language>
<Foundation.Data_Types.Expression.body></Foundation.Data_Types.Expression.body>
</Foundation.Data_Types.Expression>
</Foundation.Core.Parameter.defaultValue>
<Foundation.Core.Parameter.kind xmi.value = 'return' />
<Foundation.Core.Parameter.type>
<Foundation.Core.DataType xmi.idref = 'txmiid8' />
</Foundation.Core.Parameter.type>
</Foundation.Core.Parameter>
<Foundation.Core.Parameter xmi.id = 'txmiid4c.1' >
<Foundation.Core.ModelElement.name>obj</Foundation.Core.ModelElement.name>
<Foundation.Core.ModelElement.visibility xmi.value = 'private' />
<Foundation.Core.Parameter.defaultValue>
<Foundation.Data_Types.Expression>
<Foundation.Data_Types.Expression.language></Foundation.Data_Types.Expression.language>
<Foundation.Data_Types.Expression.body></Foundation.Data_Types.Expression.body>
</Foundation.Data_Types.Expression>
</Foundation.Core.Parameter.defaultValue>
<Foundation.Core.Parameter.kind xmi.value = 'inout' />
<Foundation.Core.Parameter.type>
<Foundation.Core.DataType xmi.idref = 'txmiid36' />
</Foundation.Core.Parameter.type>
</Foundation.Core.Parameter>
</Foundation.Core.BehavioralFeature.parameter>
</Foundation.Core.Operation>
<Foundation.Core.Operation xmi.id = 'txmiid4d.0' >
<Foundation.Core.ModelElement.name>giveClaimToCaseWorker</Foundation.Core.ModelElement.name>
<Foundation.Core.ModelElement.visibility xmi.value = 'public' />
<Foundation.Core.Feature.ownerScope xmi.value = 'instance' />
<Foundation.Core.BehavioralFeature.isQuery xmi.value = 'false' />
<Foundation.Core.Operation.specification></Foundation.Core.Operation.specification>
<Foundation.Core.Operation.isPolymorphic xmi.value = 'false' />
<Foundation.Core.Operation.concurrency xmi.value = 'sequential' />
<Foundation.Core.ModelElement.stereotype>
<Foundation.Extension_Mechanisms.Stereotype xmi.idref = 'txmiid1b.S' />
</Foundation.Core.ModelElement.stereotype>
</Foundation.Core.ModelElement.taggedValue>
<Foundation.Extension_Mechanisms.TaggedValue>

<Foundation.Extension_Mechanisms.TaggedValue.tag>documentation</Foundation.Extension_Mechanisms.TaggedValue.tag>
<Foundation.Extension_Mechanisms.TaggedValue.value>
</Foundation.Extension_Mechanisms.TaggedValue.value>
</Foundation.Extension_Mechanisms.TaggedValue>
</Foundation.Core.ModelElement.taggedValue>
<Foundation.Core.BehavioralFeature.parameter>
<Foundation.Core.Parameter xmi.id = 'txmiid4d.Return' >

<Foundation.Core.ModelElement.name>giveClaimToCaseWorker.Return</Foundation.Core.ModelElement.name>
<Foundation.Core.ModelElement.visibility xmi.value = 'private' />
<Foundation.Core.Parameter.defaultValue>
<Foundation.Data_Types.Expression>
<Foundation.Data_Types.Expression.language></Foundation.Data_Types.Expression.language>
<Foundation.Data_Types.Expression.body></Foundation.Data_Types.Expression.body>
</Foundation.Data_Types.Expression>
</Foundation.Core.Parameter.defaultValue>
<Foundation.Core.Parameter.kind xmi.value = 'return' />
<Foundation.Core.Parameter.type>
<Foundation.Core.DataType xmi.idref = 'txmiid8' />
</Foundation.Core.Parameter.type>
</Foundation.Core.Parameter>
</Foundation.Core.BehavioralFeature.parameter>
</Foundation.Core.Operation>
<Foundation.Core.Operation xmi.id = 'txmiid4e.0' >
<Foundation.Core.ModelElement.name>recordDecision</Foundation.Core.ModelElement.name>
<Foundation.Core.ModelElement.visibility xmi.value = 'protected' />
<Foundation.Core.Feature.ownerScope xmi.value = 'instance' />
<Foundation.Core.BehavioralFeature.isQuery xmi.value = 'false' />
<Foundation.Core.Operation.specification></Foundation.Core.Operation.specification>
<Foundation.Core.Operation.isPolymorphic xmi.value = 'false' />
<Foundation.Core.Operation.concurrency xmi.value = 'sequential' />
<Foundation.Core.ModelElement.stereotype>
```

RADs and the UML

©2005 Role Modellers Ltd

www.rolemodellers.com

```
<Foundation.Extension_Mechanisms.Stereotype xmi.idref = 'txmiid20.S' />
</Foundation.Core.ModelElement.stereotype>
<Foundation.Core.ModelElement.taggedValue>
  <Foundation.Extension_Mechanisms.TaggedValue>
    <Foundation.Extension_Mechanisms.TaggedValue.tag>documentation</Foundation.Extension_Mechanisms.TaggedValue.tag>
    <Foundation.Extension_Mechanisms.TaggedValue.value>
      </Foundation.Extension_Mechanisms.TaggedValue.value>
    </Foundation.Extension_Mechanisms.TaggedValue>
  </Foundation.Core.ModelElement.taggedValue>
  <Foundation.Core.BehavioralFeature.parameter>
    <Foundation.Core.Parameter xmi.id = 'txmiid4e.Return' >
      <Foundation.Core.ModelElement.name>recordDecision.Return</Foundation.Core.ModelElement.name>
      <Foundation.Core.ModelElement.visibility xmi.value = 'private' />
      <Foundation.Core.Parameter.defaultValue>
        <Foundation.Data_Types.Expression>
          <Foundation.Data_Types.Expression.language></Foundation.Data_Types.Expression.language>
          <Foundation.Data_Types.Expression.body></Foundation.Data_Types.Expression.body>
        </Foundation.Data_Types.Expression>
      </Foundation.Core.Parameter.defaultValue>
      <Foundation.Core.Parameter.kind xmi.value = 'return' />
      <Foundation.Core.Parameter.type>
        <Foundation.Core.DataType xmi.idref = 'txmiid8' />
      </Foundation.Core.Parameter.type>
    </Foundation.Core.Parameter>
    <Foundation.Core.Parameter xmi.id = 'txmiid4e.1' >
      <Foundation.Core.ModelElement.name>admit</Foundation.Core.ModelElement.name>
      <Foundation.Core.ModelElement.visibility xmi.value = 'private' />
      <Foundation.Core.Parameter.defaultValue>
        <Foundation.Data_Types.Expression>
          <Foundation.Data_Types.Expression.language></Foundation.Data_Types.Expression.language>
          <Foundation.Data_Types.Expression.body></Foundation.Data_Types.Expression.body>
        </Foundation.Data_Types.Expression>
      </Foundation.Core.Parameter.defaultValue>
      <Foundation.Core.Parameter.kind xmi.value = 'inout' />
      <Foundation.Core.Parameter.type>
        <Foundation.Core.DataType xmi.idref = 'txmiid25' />
      </Foundation.Core.Parameter.type>
    </Foundation.Core.Parameter>
  </Foundation.Core.BehavioralFeature.parameter>
</Foundation.Core.Operation>
<Foundation.Core.Operation xmi.id = 'txmiid4f.0' >
  <Foundation.Core.ModelElement.name>claimFormObtained</Foundation.Core.ModelElement.name>
  <Foundation.Core.ModelElement.visibility xmi.value = 'protected' />
  <Foundation.Core.Feature.ownerScope xmi.value = 'instance' />
  <Foundation.Core.BehavioralFeature.isQuery xmi.value = 'false' />
  <Foundation.Core.Operation.specification></Foundation.Core.Operation.specification>
  <Foundation.Core.Operation.isPolymorphic xmi.value = 'false' />
  <Foundation.Core.Operation.concurrency xmi.value = 'sequential' />
  <Foundation.Core.ModelElement.stereotype>
    <Foundation.Extension_Mechanisms.Stereotype xmi.idref = 'txmiid24.S' />
  </Foundation.Core.ModelElement.stereotype>
<Foundation.Core.ModelElement.taggedValue>
  <Foundation.Extension_Mechanisms.TaggedValue>
    <Foundation.Extension_Mechanisms.TaggedValue.tag>documentation</Foundation.Extension_Mechanisms.TaggedValue.tag>
    <Foundation.Extension_Mechanisms.TaggedValue.value>
      </Foundation.Extension_Mechanisms.TaggedValue.value>
    </Foundation.Extension_Mechanisms.TaggedValue>
  </Foundation.Core.ModelElement.taggedValue>
  <Foundation.Core.BehavioralFeature.parameter>
    <Foundation.Core.Parameter xmi.id = 'txmiid4f.Return' >
      <Foundation.Core.ModelElement.name>claimFormObtained.Return</Foundation.Core.ModelElement.name>
      <Foundation.Core.ModelElement.visibility xmi.value = 'private' />
      <Foundation.Core.Parameter.defaultValue>
        <Foundation.Data_Types.Expression>
          <Foundation.Data_Types.Expression.language></Foundation.Data_Types.Expression.language>
          <Foundation.Data_Types.Expression.body></Foundation.Data_Types.Expression.body>
        </Foundation.Data_Types.Expression>
      </Foundation.Core.Parameter.defaultValue>
      <Foundation.Core.Parameter.kind xmi.value = 'return' />
      <Foundation.Core.Parameter.type>
        <Foundation.Core.DataType xmi.idref = 'txmiid25' />
      </Foundation.Core.Parameter.type>
    </Foundation.Core.Parameter>
  </Foundation.Core.BehavioralFeature.parameter>
</Foundation.Core.Operation>
<Foundation.Core.Operation xmi.id = 'txmiid50.0' >
  <Foundation.Core.ModelElement.name>decisionGiven</Foundation.Core.ModelElement.name>
```

```

<Foundation.Core.ModelElement.visibility xmi.value = 'protected' />
<Foundation.Core.Feature.ownerScope xmi.value = 'instance' />
<Foundation.Core.BehavioralFeature.isQuery xmi.value = 'false' />
<Foundation.Core.Operation.specification></Foundation.Core.Operation.specification>
<Foundation.Core.Operation.isPolymorphic xmi.value = 'false' />
<Foundation.Core.Operation.concurrency xmi.value = 'sequential' />
  <Foundation.Core.ModelElement.stereotype>
    <Foundation.Extension_Mechanisms.Stereotype xmi.idref = 'txmiid24.S' />
  </Foundation.Core.ModelElement.stereotype>
</Foundation.Core.ModelElement.taggedValue>
  <Foundation.Extension_Mechanisms.TaggedValue>
    <Foundation.Extension_Mechanisms.TaggedValue.tag>documentation</Foundation.Extension_Mechanisms.TaggedValue.tag>
  </Foundation.Extension_Mechanisms.TaggedValue>
</Foundation.Core.ModelElement.taggedValue>
<Foundation.Core.BehavioralFeature.parameter>
  <Foundation.Core.Parameter xmi.id = 'txmiid50.Return' >
    <Foundation.Core.ModelElement.name>decisionGiven.Return</Foundation.Core.ModelElement.name>
    <Foundation.Core.ModelElement.visibility xmi.value = 'private' />
    <Foundation.Core.Parameter.defaultValue>
      <Foundation.Data_Types.Expression>
        <Foundation.Data_Types.Expression.language></Foundation.Data_Types.Expression.language>
        <Foundation.Data_Types.Expression.body></Foundation.Data_Types.Expression.body>
      </Foundation.Data_Types.Expression>
    </Foundation.Core.Parameter.defaultValue>
    <Foundation.Core.Parameter.kind xmi.value = 'return' />
    <Foundation.Core.Parameter.type>
      <Foundation.Core.DataType xmi.idref = 'txmiid25' />
    </Foundation.Core.Parameter.type>
  </Foundation.Core.Parameter>
</Foundation.Core.BehavioralFeature.parameter>
</Foundation.Core.Operation>
</Foundation.Core.Classifier.feature>
</Foundation.Core.Class>
<Foundation.Core.Association xmi.id = 'txmiid47.ASS' >
  <Foundation.Core.ModelElement.name></Foundation.Core.ModelElement.name>
  <Foundation.Core.ModelElement.visibility xmi.value = 'private' />
  <Foundation.Core.GeneralizableElement.isRoot xmi.value = 'false' />
  <Foundation.Core.GeneralizableElement.isLeaf xmi.value = 'false' />
  <Foundation.Core.GeneralizableElement.isAbstract xmi.value = 'false' />
  <Foundation.Core.Association.connection>
    <Foundation.Core.AssociationEnd xmi.id = 'txmiid47.CE' >
      <Foundation.Core.ModelElement.name></Foundation.Core.ModelElement.name>
      <Foundation.Core.ModelElement.visibility xmi.value = 'public' />
      <Foundation.Core.AssociationEnd.isNavigable xmi.value = 'false' />
      <Foundation.Core.AssociationEnd.isOrdered xmi.value = 'false' />
      <Foundation.Core.AssociationEnd.aggregation xmi.value = 'none' />
      <Foundation.Core.AssociationEnd.multiplicity></Foundation.Core.AssociationEnd.multiplicity>
      <Foundation.Core.AssociationEnd.changeable xmi.value = 'none' />
      <Foundation.Core.AssociationEnd.targetScope xmi.value = 'instance' />
      <Foundation.Core.AssociationEnd.type>
        <Foundation.Core.Class xmi.idref = 'txmiid29' />
      </Foundation.Core.AssociationEnd.type>
    </Foundation.Core.AssociationEnd>
    <Foundation.Core.AssociationEnd xmi.id = 'txmiid47.SE' >
      <Foundation.Core.ModelElement.name></Foundation.Core.ModelElement.name>
      <Foundation.Core.ModelElement.visibility xmi.value = 'public' />
      <Foundation.Core.AssociationEnd.isNavigable xmi.value = 'false' />
      <Foundation.Core.AssociationEnd.isOrdered xmi.value = 'false' />
      <Foundation.Core.AssociationEnd.aggregation xmi.value = 'none' />
      <Foundation.Core.AssociationEnd.multiplicity></Foundation.Core.AssociationEnd.multiplicity>
      <Foundation.Core.AssociationEnd.changeable xmi.value = 'none' />
      <Foundation.Core.AssociationEnd.targetScope xmi.value = 'instance' />
      <Foundation.Core.AssociationEnd.type>
        <Foundation.Core.Class xmi.idref = 'txmiida' />
      </Foundation.Core.AssociationEnd.type>
    </Foundation.Core.AssociationEnd>
  </Foundation.Core.Association.connection>
</Foundation.Core.Association>
<Foundation.Core.Association xmi.id = 'txmiid48.ASS' >
  <Foundation.Core.ModelElement.name></Foundation.Core.ModelElement.name>
  <Foundation.Core.ModelElement.visibility xmi.value = 'private' />
  <Foundation.Core.GeneralizableElement.isRoot xmi.value = 'false' />
  <Foundation.Core.GeneralizableElement.isLeaf xmi.value = 'false' />
  <Foundation.Core.GeneralizableElement.isAbstract xmi.value = 'false' />
  <Foundation.Core.Association.connection>
    <Foundation.Core.AssociationEnd xmi.id = 'txmiid48.CE' >
      <Foundation.Core.ModelElement.name></Foundation.Core.ModelElement.name>
      <Foundation.Core.ModelElement.visibility xmi.value = 'public' />
  </Foundation.Core.AssociationEnd>
  </Foundation.Core.Association.connection>

```

RADs and the UML

©2005 Role Modellers Ltd

www.rolemodellers.com

```
<Foundation.Core.AssociationEnd.isNavigable xmi.value = 'false' />
<Foundation.Core.AssociationEnd.isOrdered xmi.value = 'false' />
<Foundation.Core.AssociationEnd.aggregation xmi.value = 'none' />
<Foundation.Core.AssociationEnd.multiplicity></Foundation.Core.AssociationEnd.multiplicity>
<Foundation.Core.AssociationEnd.changeable xmi.value = 'none' />
<Foundation.Core.AssociationEnd.targetScope xmi.value = 'instance' />
<Foundation.Core.AssociationEnd.type>
  <Foundation.Core.Class xmi.idref = 'txmiid29' />
</Foundation.Core.AssociationEnd.type>
</Foundation.Core.AssociationEnd>
<Foundation.Core.AssociationEnd xmi.id = 'txmiid48.SE' >
<Foundation.Core.ModelElement.name></Foundation.Core.ModelElement.name>
<Foundation.Core.ModelElement.visibility xmi.value = 'public' />
<Foundation.Core.AssociationEnd.isNavigable xmi.value = 'false' />
<Foundation.Core.AssociationEnd.isOrdered xmi.value = 'false' />
<Foundation.Core.AssociationEnd.aggregation xmi.value = 'none' />
<Foundation.Core.AssociationEnd.multiplicity></Foundation.Core.AssociationEnd.multiplicity>
<Foundation.Core.AssociationEnd.changeable xmi.value = 'none' />
<Foundation.Core.AssociationEnd.targetScope xmi.value = 'instance' />
<Foundation.Core.AssociationEnd.type>
  <Foundation.Core.Class xmi.idref = 'txmiid2a' />
</Foundation.Core.AssociationEnd.type>
</Foundation.Core.AssociationEnd>
</Foundation.Core.Association.connection>
</Foundation.Core.Association>
<Foundation.Core.Generalization xmi.id = 'UnderwriterRole.G' >
<Foundation.Core.ModelElement.name></Foundation.Core.ModelElement.name>
<Foundation.Core.ModelElement.visibility xmi.value = 'public' />
<Foundation.Core.Generalization.discriminator></Foundation.Core.Generalization.discriminator>
<Foundation.Core.Generalization.subtype>
  <Foundation.Core.Class xmi.idref = 'txmiid29' />
</Foundation.Core.Generalization.subtype>
<Foundation.Core.Generalization.supertype>
  <Foundation.Core.Class xmi.idref = 'txmiid2b' />
</Foundation.Core.Generalization.supertype>
</Foundation.Core.Generalization>
<Foundation.Core.DataType xmi.id = 'txmiid32' >
  <Foundation.Core.ModelElement.name>ClaimCaseWorker</Foundation.Core.ModelElement.name>
  <Foundation.Core.ModelElement.visibility xmi.value = 'private' />
  <Foundation.Core.GeneralizableElement.isRoot xmi.value = 'false' />
  <Foundation.Core.GeneralizableElement.isLeaf xmi.value = 'false' />
  <Foundation.Core.GeneralizableElement.isAbstract xmi.value = 'false' />
</Foundation.Core.DataType>
<Foundation.Core.DataType xmi.id = 'txmiid45' >
  <Foundation.Core.ModelElement.name>Actor</Foundation.Core.ModelElement.name>
  <Foundation.Core.ModelElement.visibility xmi.value = 'private' />
  <Foundation.Core.GeneralizableElement.isRoot xmi.value = 'false' />
  <Foundation.Core.GeneralizableElement.isLeaf xmi.value = 'false' />
  <Foundation.Core.GeneralizableElement.isAbstract xmi.value = 'false' />
</Foundation.Core.DataType>
<Foundation.Core.DataType xmi.id = 'txmiid36' >
  <Foundation.Core.ModelElement.name>claimLOB</Foundation.Core.ModelElement.name>
  <Foundation.Core.ModelElement.visibility xmi.value = 'private' />
  <Foundation.Core.GeneralizableElement.isRoot xmi.value = 'false' />
  <Foundation.Core.GeneralizableElement.isLeaf xmi.value = 'false' />
  <Foundation.Core.GeneralizableElement.isAbstract xmi.value = 'false' />
</Foundation.Core.DataType>
<Foundation.Core.DataType xmi.id = 'txmiid12' >
  <Foundation.Core.ModelElement.name>Underwriter</Foundation.Core.ModelElement.name>
  <Foundation.Core.ModelElement.visibility xmi.value = 'private' />
  <Foundation.Core.GeneralizableElement.isRoot xmi.value = 'false' />
  <Foundation.Core.GeneralizableElement.isLeaf xmi.value = 'false' />
  <Foundation.Core.GeneralizableElement.isAbstract xmi.value = 'false' />
</Foundation.Core.DataType>
<Foundation.Core.DataType xmi.id = 'txmiid8' >
  <Foundation.Core.ModelElement.name>void</Foundation.Core.ModelElement.name>
  <Foundation.Core.ModelElement.visibility xmi.value = 'private' />
  <Foundation.Core.GeneralizableElement.isRoot xmi.value = 'false' />
  <Foundation.Core.GeneralizableElement.isLeaf xmi.value = 'false' />
  <Foundation.Core.GeneralizableElement.isAbstract xmi.value = 'false' />
</Foundation.Core.DataType>
<Foundation.Core.DataType xmi.id = 'txmiid5' >
  <Foundation.Core.ModelElement.name>Vector</Foundation.Core.ModelElement.name>
  <Foundation.Core.ModelElement.visibility xmi.value = 'private' />
  <Foundation.Core.GeneralizableElement.isRoot xmi.value = 'false' />
  <Foundation.Core.GeneralizableElement.isLeaf xmi.value = 'false' />
  <Foundation.Core.GeneralizableElement.isAbstract xmi.value = 'false' />
</Foundation.Core.DataType>
<Foundation.Core.DataType xmi.id = 'txmiid21' >
  <Foundation.Core.ModelElement.name>int</Foundation.Core.ModelElement.name>
  <Foundation.Core.ModelElement.visibility xmi.value = 'private' />
  <Foundation.Core.GeneralizableElement.isRoot xmi.value = 'false' />
```

RADs and the UML

©2005 Role Modellers Ltd

www.rolemodellers.com

```
<Foundation.Core.GeneralizableElement.isLeaf xmi.value = 'false'/>
<Foundation.Core.GeneralizableElement.isAbstract xmi.value = 'false'/>
</Foundation.Core.DataType>
<Foundation.Core.DataType xmi.id = 'txmiid10' >
  <Foundation.Core.ModelElement.name>Claimant</Foundation.Core.ModelElement.name>
  <Foundation.Core.ModelElement.visibility xmi.value = 'private'/>
  <Foundation.Core.GeneralizableElement.isRoot xmi.value = 'false'/>
  <Foundation.Core.GeneralizableElement.isLeaf xmi.value = 'false'/>
  <Foundation.Core.GeneralizableElement.isAbstract xmi.value = 'false'/>
</Foundation.Core.DataType>
<Foundation.Core.DataType xmi.id = 'txmiid41' >
  <Foundation.Core.ModelElement.name>URL</Foundation.Core.ModelElement.name>
  <Foundation.Core.ModelElement.visibility xmi.value = 'private'/>
  <Foundation.Core.GeneralizableElement.isRoot xmi.value = 'false'/>
  <Foundation.Core.GeneralizableElement.isLeaf xmi.value = 'false'/>
  <Foundation.Core.GeneralizableElement.isAbstract xmi.value = 'false'/>
</Foundation.Core.DataType>
<Foundation.Core.DataType xmi.id = 'txmiid9' >
  <Foundation.Core.ModelElement.name>Role</Foundation.Core.ModelElement.name>
  <Foundation.Core.ModelElement.visibility xmi.value = 'private'/>
  <Foundation.Core.GeneralizableElement.isRoot xmi.value = 'false'/>
  <Foundation.Core.GeneralizableElement.isLeaf xmi.value = 'false'/>
  <Foundation.Core.GeneralizableElement.isAbstract xmi.value = 'false'/>
</Foundation.Core.DataType>
<Foundation.Core.DataType xmi.id = 'txmiid25' >
  <Foundation.Core.ModelElement.name>boolean</Foundation.Core.ModelElement.name>
  <Foundation.Core.ModelElement.visibility xmi.value = 'private'/>
  <Foundation.Core.GeneralizableElement.isRoot xmi.value = 'false'/>
  <Foundation.Core.GeneralizableElement.isLeaf xmi.value = 'false'/>
  <Foundation.Core.GeneralizableElement.isAbstract xmi.value = 'false'/>
</Foundation.Core.DataType>
<Foundation.Core.DataType xmi.id = 'txmiid14' >
  <Foundation.Core.ModelElement.name>ClaimLOB</Foundation.Core.ModelElement.name>
  <Foundation.Core.ModelElement.visibility xmi.value = 'private'/>
  <Foundation.Core.GeneralizableElement.isRoot xmi.value = 'false'/>
  <Foundation.Core.GeneralizableElement.isLeaf xmi.value = 'false'/>
  <Foundation.Core.GeneralizableElement.isAbstract xmi.value = 'false'/>
</Foundation.Core.DataType>
<Foundation.Extension_Mechanisms.Stereotype xmi.id = 'txmiid24.S' >
  <Foundation.Core.ModelElement.name>state</Foundation.Core.ModelElement.name>
  <Foundation.Core.ModelElement.visibility xmi.value = 'private'/>
  <Foundation.Core.GeneralizableElement.isRoot xmi.value = 'false'/>
  <Foundation.Core.GeneralizableElement.isLeaf xmi.value = 'false'/>
  <Foundation.Core.GeneralizableElement.isAbstract xmi.value = 'false'/>
  <Foundation.Extension_Mechanisms.Stereotype.icon>
    <Foundation.Data_Types.Geometry>
      <Foundation.Data_Types.Geometry.body>
        </Foundation.Data_Types.Geometry.body>
      </Foundation.Data_Types.Geometry>
    </Foundation.Extension_Mechanisms.Stereotype.icon>
</Foundation.Extension_Mechanisms.Stereotype.baseClass></Foundation.Extension_Mechanisms.Stereotype
.baseClass>
  <Foundation.Extension_Mechanisms.Stereotype.extendedElement>
  </Foundation.Extension_Mechanisms.Stereotype.extendedElement>
</Foundation.Extension_Mechanisms.Stereotype>
<Foundation.Extension_Mechanisms.Stereotype xmi.id = 'txmiidle.S' >
  <Foundation.Core.ModelElement.name>form</Foundation.Core.ModelElement.name>
  <Foundation.Core.ModelElement.visibility xmi.value = 'private'/>
  <Foundation.Core.GeneralizableElement.isRoot xmi.value = 'false'/>
  <Foundation.Core.GeneralizableElement.isLeaf xmi.value = 'false'/>
  <Foundation.Core.GeneralizableElement.isAbstract xmi.value = 'false'/>
  <Foundation.Extension_Mechanisms.Stereotype.icon>
    <Foundation.Data_Types.Geometry>
      <Foundation.Data_Types.Geometry.body>
        </Foundation.Data_Types.Geometry.body>
      </Foundation.Data_Types.Geometry>
    </Foundation.Extension_Mechanisms.Stereotype.icon>
</Foundation.Extension_Mechanisms.Stereotype.baseClass></Foundation.Extension_Mechanisms.Stereotype
.baseClass>
  <Foundation.Extension_Mechanisms.Stereotype.extendedElement>
  </Foundation.Extension_Mechanisms.Stereotype.extendedElement>
</Foundation.Extension_Mechanisms.Stereotype>
<Foundation.Extension_Mechanisms.Stereotype xmi.id = 'txmiid16.S' >
  <Foundation.Core.ModelElement.name>get</Foundation.Core.ModelElement.name>
  <Foundation.Core.ModelElement.visibility xmi.value = 'private'/>
  <Foundation.Core.GeneralizableElement.isRoot xmi.value = 'false'/>
  <Foundation.Core.GeneralizableElement.isLeaf xmi.value = 'false'/>
  <Foundation.Core.GeneralizableElement.isAbstract xmi.value = 'false'/>
  <Foundation.Extension_Mechanisms.Stereotype.icon>
    <Foundation.Data_Types.Geometry>
```

RADs and the UML

©2005 Role Modellers Ltd

www.rolemodellers.com

```
<Foundation.Data_Types.Geometry.body>
</Foundation.Data_Types.Geometry.body>
</Foundation.Data_Types.Geometry>
</Foundation.Extension_Mechanisms.Stereotype.icon>

<Foundation.Extension_Mechanisms.Stereotype.baseClass></Foundation.Extension_Mechanisms.Stereotype
.baseClass>
  <Foundation.Extension_Mechanisms.Stereotype.extendedElement>
  </Foundation.Extension_Mechanisms.Stereotype.extendedElement>
</Foundation.Extension_Mechanisms.Stereotype>
<Foundation.Extension_Mechanisms.Stereotype xmi.id = 'txmiid44.S' >
  <Foundation.Core.ModelElement.name>constructor</Foundation.Core.ModelElement.name>
  <Foundation.Core.ModelElement.visibility xmi.value = 'private' />
  <Foundation.Core.GeneralizableElement.isRoot xmi.value = 'false' />
  <Foundation.Core.GeneralizableElement.isLeaf xmi.value = 'false' />
  <Foundation.Core.GeneralizableElement.isAbstract xmi.value = 'false' />
  <Foundation.Extension_Mechanisms.Stereotype.icon>
  <Foundation.Data_Types.Geometry>
  <Foundation.Data_Types.Geometry.body>
  </Foundation.Data_Types.Geometry.body>
  </Foundation.Data_Types.Geometry>
  </Foundation.Extension_Mechanisms.Stereotype.icon>

<Foundation.Extension_Mechanisms.Stereotype.baseClass></Foundation.Extension_Mechanisms.Stereotype
.baseClass>
  <Foundation.Extension_Mechanisms.Stereotype.extendedElement>
  </Foundation.Extension_Mechanisms.Stereotype.extendedElement>
</Foundation.Extension_Mechanisms.Stereotype>
<Foundation.Extension_Mechanisms.Stereotype xmi.id = 'txmiid2c.S' >
  <Foundation.Core.ModelElement.name>lightweight object</Foundation.Core.ModelElement.name>
  <Foundation.Core.ModelElement.visibility xmi.value = 'private' />
  <Foundation.Core.GeneralizableElement.isRoot xmi.value = 'false' />
  <Foundation.Core.GeneralizableElement.isLeaf xmi.value = 'false' />
  <Foundation.Core.GeneralizableElement.isAbstract xmi.value = 'false' />
  <Foundation.Extension_Mechanisms.Stereotype.icon>
  <Foundation.Data_Types.Geometry>
  <Foundation.Data_Types.Geometry.body>
  </Foundation.Data_Types.Geometry.body>
  </Foundation.Data_Types.Geometry>
  </Foundation.Extension_Mechanisms.Stereotype.icon>

<Foundation.Extension_Mechanisms.Stereotype.baseClass></Foundation.Extension_Mechanisms.Stereotype
.baseClass>
  <Foundation.Extension_Mechanisms.Stereotype.extendedElement>
  </Foundation.Extension_Mechanisms.Stereotype.extendedElement>
</Foundation.Extension_Mechanisms.Stereotype>
<Foundation.Extension_Mechanisms.Stereotype xmi.id = 'txmiid3.S' >
  <Foundation.Core.ModelElement.name>actor</Foundation.Core.ModelElement.name>
  <Foundation.Core.ModelElement.visibility xmi.value = 'private' />
  <Foundation.Core.GeneralizableElement.isRoot xmi.value = 'false' />
  <Foundation.Core.GeneralizableElement.isLeaf xmi.value = 'false' />
  <Foundation.Core.GeneralizableElement.isAbstract xmi.value = 'false' />
  <Foundation.Extension_Mechanisms.Stereotype.icon>
  <Foundation.Data_Types.Geometry>
  <Foundation.Data_Types.Geometry.body>
  </Foundation.Data_Types.Geometry.body>
  </Foundation.Data_Types.Geometry>
  </Foundation.Extension_Mechanisms.Stereotype.icon>

<Foundation.Extension_Mechanisms.Stereotype.baseClass></Foundation.Extension_Mechanisms.Stereotype
.baseClass>
  <Foundation.Extension_Mechanisms.Stereotype.extendedElement>
  </Foundation.Extension_Mechanisms.Stereotype.extendedElement>
</Foundation.Extension_Mechanisms.Stereotype>
<Foundation.Extension_Mechanisms.Stereotype xmi.id = 'txmiidb.S' >
  <Foundation.Core.ModelElement.name>role</Foundation.Core.ModelElement.name>
  <Foundation.Core.ModelElement.visibility xmi.value = 'private' />
  <Foundation.Core.GeneralizableElement.isRoot xmi.value = 'false' />
  <Foundation.Core.GeneralizableElement.isLeaf xmi.value = 'false' />
  <Foundation.Core.GeneralizableElement.isAbstract xmi.value = 'false' />
  <Foundation.Extension_Mechanisms.Stereotype.icon>
  <Foundation.Data_Types.Geometry>
  <Foundation.Data_Types.Geometry.body>
  </Foundation.Data_Types.Geometry.body>
  </Foundation.Data_Types.Geometry>
  </Foundation.Extension_Mechanisms.Stereotype.icon>

<Foundation.Extension_Mechanisms.Stereotype.baseClass></Foundation.Extension_Mechanisms.Stereotype
.baseClass>
  <Foundation.Extension_Mechanisms.Stereotype.extendedElement>
  </Foundation.Extension_Mechanisms.Stereotype.extendedElement>
</Foundation.Extension_Mechanisms.Stereotype>
```

RADs and the UML

©2005 Role Modellers Ltd

www.rolemodellers.com

```
<Foundation.Extension_Mechanisms.Stereotype xmi.id = 'txmiid1b.S' >
  <Foundation.Core.ModelElement.name>give</Foundation.Core.ModelElement.name>
  <Foundation.Core.ModelElement.visibility xmi.value = 'private' />
  <Foundation.Core.GeneralizableElement.isRoot xmi.value = 'false' />
  <Foundation.Core.GeneralizableElement.isLeaf xmi.value = 'false' />
  <Foundation.Core.GeneralizableElement.isAbstract xmi.value = 'false' />
  <Foundation.Extension_Mechanisms.Stereotype.icon>
    <Foundation.Data_Types.Geometry>
      <Foundation.Data_Types.Geometry.body>
    </Foundation.Data_Types.Geometry.body>
  </Foundation.Data_Types.Geometry>
</Foundation.Extension_Mechanisms.Stereotype.icon>

<Foundation.Extension_Mechanisms.Stereotype.baseClass></Foundation.Extension_Mechanisms.Stereotype
.baseClass>
  <Foundation.Extension_Mechanisms.Stereotype.extendedElement>
  </Foundation.Extension_Mechanisms.Stereotype.extendedElement>
</Foundation.Extension_Mechanisms.Stereotype>
<Foundation.Extension_Mechanisms.Stereotype xmi.id = 'txmiid3c.S' >
  <Foundation.Core.ModelElement.name>service provider</Foundation.Core.ModelElement.name>
  <Foundation.Core.ModelElement.visibility xmi.value = 'private' />
  <Foundation.Core.GeneralizableElement.isRoot xmi.value = 'false' />
  <Foundation.Core.GeneralizableElement.isLeaf xmi.value = 'false' />
  <Foundation.Core.GeneralizableElement.isAbstract xmi.value = 'false' />
  <Foundation.Extension_Mechanisms.Stereotype.icon>
    <Foundation.Data_Types.Geometry>
      <Foundation.Data_Types.Geometry.body>
    </Foundation.Data_Types.Geometry.body>
  </Foundation.Data_Types.Geometry>
</Foundation.Extension_Mechanisms.Stereotype.icon>

<Foundation.Extension_Mechanisms.Stereotype.baseClass></Foundation.Extension_Mechanisms.Stereotype
.baseClass>
  <Foundation.Extension_Mechanisms.Stereotype.extendedElement>
  </Foundation.Extension_Mechanisms.Stereotype.extendedElement>
</Foundation.Extension_Mechanisms.Stereotype>
<Foundation.Extension_Mechanisms.Stereotype xmi.id = 'txmiid20.S' >
  <Foundation.Core.ModelElement.name>service</Foundation.Core.ModelElement.name>
  <Foundation.Core.ModelElement.visibility xmi.value = 'private' />
  <Foundation.Core.GeneralizableElement.isRoot xmi.value = 'false' />
  <Foundation.Core.GeneralizableElement.isLeaf xmi.value = 'false' />
  <Foundation.Core.GeneralizableElement.isAbstract xmi.value = 'false' />
  <Foundation.Extension_Mechanisms.Stereotype.icon>
    <Foundation.Data_Types.Geometry>
      <Foundation.Data_Types.Geometry.body>
    </Foundation.Data_Types.Geometry.body>
  </Foundation.Data_Types.Geometry>
</Foundation.Extension_Mechanisms.Stereotype.icon>

<Foundation.Extension_Mechanisms.Stereotype.baseClass></Foundation.Extension_Mechanisms.Stereotype
.baseClass>
  <Foundation.Extension_Mechanisms.Stereotype.extendedElement>
  </Foundation.Extension_Mechanisms.Stereotype.extendedElement>
</Foundation.Extension_Mechanisms.Stereotype>
<Foundation.Extension_Mechanisms.Stereotype xmi.id = 'txmiid7.S' >
  <Foundation.Core.ModelElement.name>assign</Foundation.Core.ModelElement.name>
  <Foundation.Core.ModelElement.visibility xmi.value = 'private' />
  <Foundation.Core.GeneralizableElement.isRoot xmi.value = 'false' />
  <Foundation.Core.GeneralizableElement.isLeaf xmi.value = 'false' />
  <Foundation.Core.GeneralizableElement.isAbstract xmi.value = 'false' />
  <Foundation.Extension_Mechanisms.Stereotype.icon>
    <Foundation.Data_Types.Geometry>
      <Foundation.Data_Types.Geometry.body>
    </Foundation.Data_Types.Geometry.body>
  </Foundation.Data_Types.Geometry>
</Foundation.Extension_Mechanisms.Stereotype.icon>

<Foundation.Extension_Mechanisms.Stereotype.baseClass></Foundation.Extension_Mechanisms.Stereotype
.baseClass>
  <Foundation.Extension_Mechanisms.Stereotype.extendedElement>
  </Foundation.Extension_Mechanisms.Stereotype.extendedElement>
</Foundation.Extension_Mechanisms.Stereotype>
</Foundation.Core.Namespace.ownedElement>
</Model_Management.Model>
</XMI.content>
</XMI>
```